

SAFETY SHOWERS AND EYEWASH EQUIPMENT

PREMIUM RANGE

Item Code	Description
H-EXP18GS85G	Emergency Combination Safety Shower with Eye/ Face Wash

This floor mounted emergency safety shower constructed Marine 316 Stainless Steel, complete with an integrated eye/face wash unit, adheres to ANSI standards. Tailored for environments with moderate ambient temperatures and it offers a dependable safety solution for various industrial settings.

The Stocked Model is Versatile and allows for Top or Mid-Level water Inlet at 1-1/4 BSP Female.

SPECIFICATIONS	
OPERATING PRESSURE	2 to 6 BAR G / 29 to 87 PSI (higher supply pressures accommodated with the incorporation of the optional pressure reducing valve)
MINIMUM FLOW RATES	Shower: 76 L per minute / 20 US gal per minute Eye wash: 12 L per minute / 3 US gal per minute
AMBIENT OPERATING TEMPERATURE	MINIMUM 5C / 41F MAXIMUM 35C / 95F
Please see below for optional accessories	

Item Code	Description
H-EXPSD18GS85G	Self-Draining Emergency Combination Safety Shower with Eye/Face Wash

This floor mounted self-draining emergency safety shower, constructed with Marine 316 Stainless Steel, features an integrated eye/face wash unit. Its innovative design facilitates the drainage of standing water away from the standpipe, ensuring the delivery of tepid water (16-36°C). Positioned directly above the water inlet, the valve is accompanied by a bleed pipe to enable the drainage of standing water into the ground, preventing the formation of stagnant water and potential overheating from solar radiation. This design mitigates the risk of further injury to the operator. Additionally, this unit is suitable for applications exposed to ambient temperatures of up to 45 degrees Celsius in direct sunlight.

The stocked model's bottom water Inlet at 1-1/4 BSP Female.

SPECIFICATIONS	
OPERATING PRESSURE	2 to 6 BAR G / 29 to 87 PSI (higher supply pressures accommodated with the incorporation of the optional pressure reducing valve)
MINIMUM FLOW RATES	Shower: 76 L per minute / 20 US gal per minute Eye wash: 12 L per minute / 3 US gal per minute
AMBIENT OPERATING TEMPERATURE	MINIMUM 5C / 41F MAXIMUM 55C / 131F
Please see below for optional accessories	



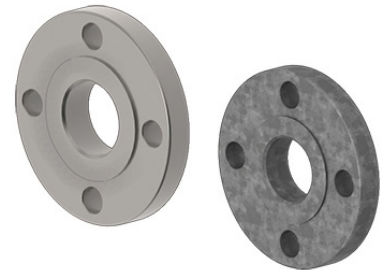
ACCESSORIES FOR PREMIUM RANGE OF SAFETY SHOWERS AND EYEWASH EQUIPMENT

PREMIUM RANGE ACCESSORIES

ACCESSORIES AND EYEWASH EQUIPMENT	
Item Code	Description
H-TFC-G	G RANGE FOOT TREADLE FOR PREMIUM EYEWASH
H-KTFC	K RANGE FOOT TREADLE FOR SELF-DRAINING EYEWASH



Item Code	Description
H-SD05010	1 INCH 316L/GALV ANSI/ASME/PN 150LB RAISED/FLAT FACE FLANGE AT WATER INLET/OUTLET
H-SD05030	1-1/4 INCH 316L/GALV ANSI/ASME 150LB RAISED/FLAT FACE FLANGE AT WATER INLET/OUTLET
H-SD05040	1-1/2 INCH 316L/GALV ANSI/ASME 150LB RAISED/FLAT FACE FLANGE AT WATER INLET/OUTLET
H-SD05050	2 INCH 316L/GALV ANSI/ASME 150LB RAISED/FLAT FACE FLANGE AT WATER INLET/OUTLET



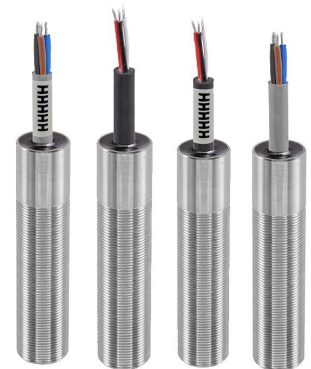
Other Sizes are available on request

Item Code	Description
H-VL60001	1/2 INCH BSP FEMALE 316 STAINLESS STEEL SCALD PROTECTION VALVE SP68-100 - VALVE FULLY OPEN AT 38 DEG C, FULLY CLOSED AT 32 DEG C
H-VL60013	1/2 INCH BSP FEMALE 316 STAINLESS STEEL SCALD PROTECTION VALVE SP68-95 - VALVE FULLY OPEN AT 35 DEG C, FULLY CLOSED AT 29 DEG C



Other sizes and Temperature parameters available on request

Item Code	Description
H-EC35147	1-1/4 Inch Bsp Euroswitch 316 Stainless Steel With Terminal Box With M20 Cable Entry, Spdt With 1 Nc & 1No Volt-Free Contacts
H-STD22KS-SS316	Low Inrush Proximity Switch, 24VDC, Suitable For Zone Suitable For Non-Flameproof Areas
H-STD22KS(2ND)-SS316	Low Inrush 2nd Proximity Switch, 24VDC Complete With Brackets Suitable For Non-Flameproof Areas
H-STD22KSZ12-SS316	Low Inrush Proximity Switch, 24VDC, Suitable For Zone 1 & 2 Areas Gas Groups 11a And 11b
H-STD22KS(2ND)Z12-SS316	Low Inrush 2nd Proximity Switch, 24VDC Complete With Brackets. Suitable For Zone 1 & 2 Areas Gas Groups 11a And 11b
H-STD22K	Brass Nickel Plated Low Inrush Proximity Switch, 24VDC, Suitable For Zone Suitable For Non-Flameproof Areas
H-STD22K(2ND)	Brass Nickel Plated Low Inrush 2nd Proximity Switch, 24VDC Complete With Brackets Suitable For Non-Flameproof Areas
H-STD22KZ12	Brass Nickel Plated Low Inrush Proximity Switch, 24VDC, Suitable For Zone 1 & 2 Areas Gas Groups 11a And 11b
H-STD22K(2ND)Z12	Brass Nickel Plated Low Inrush 2nd Proximity Switch, 24VDC Complete With Brackets Suitable For Zone 1 & 2 Areas Gas Groups 11a And 11b



Other Configurations are available on request

