

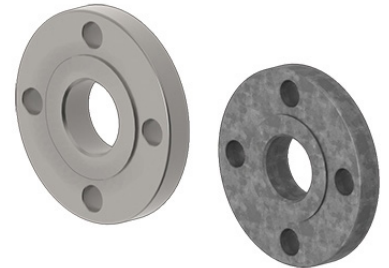
ACCESSORIES FOR PREMIUM RANGE OF SAFETY SHOWERS AND EYEWASH EQUIPMENT

PREMIUM RANGE ACCESSORIES

ACCESSORIES AND EYEWASH EQUIPMENT	
Item Code	Description
H-TFC-G	G RANGE FOOT TREADLE FOR PREMIUM EYEWASH
H-KTFC	K RANGE FOOT TREADLE FOR SELF-DRAINING EYEWASH



Item Code	Description
H-SD05010	1 INCH 316L/GALV ANSI/ASME/PN 150LB RAISED/FLAT FACE FLANGE AT WATER INLET/OUTLET
H-SD05030	1-1/4 INCH 316L/GALV ANSI/ASME 150LB RAISED/FLAT FACE FLANGE AT WATER INLET/OUTLET
H-SD05040	1-1/2 INCH 316L/GALV ANSI/ASME 150LB RAISED/FLAT FACE FLANGE AT WATER INLET/OUTLET
H-SD05050	2 INCH 316L/GALV ANSI/ASME 150LB RAISED/FLAT FACE FLANGE AT WATER INLET/OUTLET



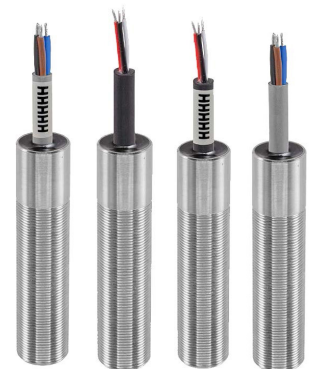
Other Sizes are available on request

Item Code	Description
H-VL60001	1/2 INCH BSP FEMALE 316 STAINLESS STEEL SCALD PROTECTION VALVE SP68-100 - VALVE FULLY OPEN AT 38 DEG C, FULLY CLOSED AT 32 DEG C
H-VL60013	1/2 INCH BSP FEMALE 316 STAINLESS STEEL SCALD PROTECTION VALVE SP68-95 - VALVE FULLY OPEN AT 35 DEG C, FULLY CLOSED AT 29 DEG C



Other sizes and Temperature parameters available on request

Item Code	Description
H-EC35147	1-1/4 Inch Bsp Euroswitch 316 Stainless Steel With Terminal Box With M20 Cable Entry, Spdt With 1 Nc & 1No Volt-Free Contacts
H-STD22KS-SS316	Low Inrush Proximity Switch, 24VDC, Suitable For Zone Suitable For Non-Flameproof Areas
H-STD22KS(2ND)-SS316	Low Inrush 2nd Proximity Switch, 24VDC Complete With Brackets Suitable For Non-Flameproof Areas
H-STD22KSZ12-SS316	Low Inrush Proximity Switch, 24VDC, Suitable For Zone 1 & 2 Areas Gas Groups 11a And 11b
H-STD22KS(2ND)Z12-SS316	Low Inrush 2nd Proximity Switch, 24VDC Complete With Brackets. Suitable For Zone 1 & 2 Areas Gas Groups 11a And 11b
H-STD22K	Brass Nickel Plated Low Inrush Proximity Switch, 24VDC, Suitable For Zone Suitable For Non-Flameproof Areas
H-STD22K(2ND)	Brass Nickel Plated Low Inrush 2nd Proximity Switch, 24VDC Complete With Brackets Suitable For Non-Flameproof Areas
H-STD22KZ12	Brass Nickel Plated Low Inrush Proximity Switch, 24VDC, Suitable For Zone 1 & 2 Areas Gas Groups 11a And 11b
H-STD22K(2ND)Z12	Brass Nickel Plated Low Inrush 2nd Proximity Switch, 24VDC Complete With Brackets Suitable For Zone 1 & 2 Areas Gas Groups 11a And 11b



Other Configurations are available on request

SIGNAGE

Signage for Safety Shower and Eye/Face Wash for all areas required

SPECIFICATIONS	
Item	Details
H-EWS	EYEWASH SIGN METAL 300X255MM SINGLE SIDE WALL MOUNTED
H-SSS	SAFETY SHOWER SIGN METAL 300X255MM DOUBLE SIDED WITH BRACKETS
H-ESS	SAFETY SHOWER/EYEWASH SIGN METAL 300X400MM DOUBLE SIDED BRACKETS
H-EWSP	EYEWASH SIGN POLY 140X140MM SINGLE SIDE WALL MOUNTED OR CABLE TIED
H-SSSP	SAFETY SHOWER SIGN POLY 140X140MM SINGLE SIDE WALL MOUNTED OR CABLE TIED
H-ESSP	SAFETY SHOWER/EYEWASH SIGN POLY 280X140MM SINGLE SIDE WALL MOUNTED OR CABLE TIED

*The Poly Signs are Single Sided and are provided for Wall Mounted Or Cable Tied.
PLEASE ADVISE UPON ORDER*

