

SPILL DECKS & FLOOR BUNDS

The Spill Deck is built tough and comes in three sizes. These Spill Decks can be configured to create non-slip banded liquid handling workstations and storage areas to fit your working environment. Two sizes of ramps are available to make loading the Spill Deck with pallet jacks and hand trolleys easy.

TSSBF1-(BB100) 1-DRUM FLOORBUND

- Ideal for small decanting or liquid collection area
- Low profile for ease of loading
- Can hold up to 10 x 25 litre containers
- Seamless design for maximum sump security
- Can be fitted with drain plugs if required
- Polyethylene construction for maximum durability
- DIBt Z-40.22-398 APPROVAL



Length	Width	Height	Weight	Sump	Max Load
920mm	720mm	175mm	15kg	100 Litre	200kg



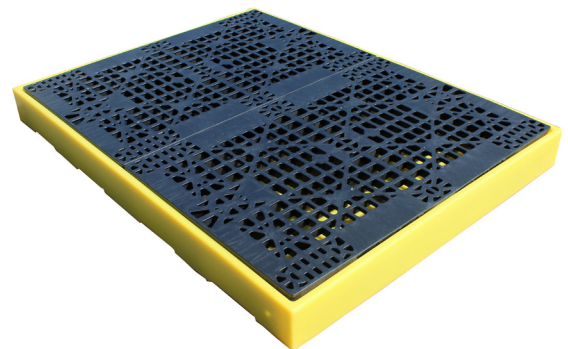
TSSBF2 2-DRUM SPILL DECK

- Ideal for small decanting or waste oil collection point
- Low profile for ease of loading
- Can be fitted with drain plugs if required
- Seamless design for maximum sump security
- Tough polyethylene construction for maximum durability
- Removable non-slip grates makes cleaning easy
- DIBt Z-40.22-398 APPROVAL

Length	Width	Height	Weight	Sump	Max Load
1260mm	860mm	150mm	20kg	130 Litre	1000kg

TSSBF4 4-DRUM SPILL DECK

- Designed to hold 4 x 205 litre drums
- Huge 300L sump complies with EPA requirements
- Can be fitted with drain plugs if required
- Seamless design for maximum sump security
- DIBt Z-40.22-398 APPROVAL



Length	Width	Height	Weight	Sump	Max Load
1660mm	1260mm	150mm	38kg	300 Litre	2000kg



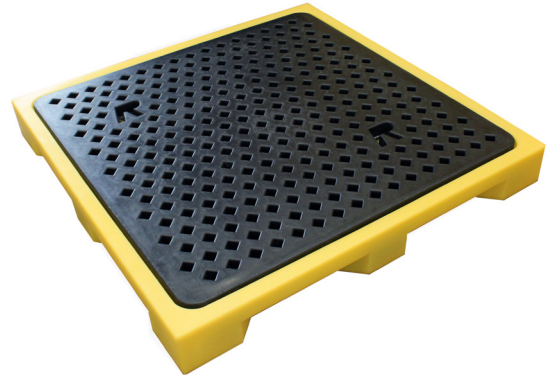
TSSBF4S 4-DRUM IN-LINE SPILL DECK

- Designed to hold 4 x 205 litre drums
- Low profile for ease of loading
- Can be fitted with drain plugs if required
- Seamless design for maximum sump security
- Corrosion-free polyethylene construction
- DIBt Z-40.22-398 APPROVAL

Length	Width	Height	Weight	Sump	Max Load
2610mm	895mm	150mm	42kg	300 Litre	2000kg

TSSBF4X
4-DRUM FLOOR TRAY

A low profile 4-drum floor tray which is only 150mm high and has additional bracing built into the base to create a rigid platform for the rotationally moulded grid mesh deck. This floor tray will accommodate up to 4 x 205ltr drums and has a UDL (Uniform Distributed Load) of 2000kg.



Length	Width	Height	Weight	Sump	Max Load
1310mm	1310mm	150mm	32kg	75 Litre	2000kg



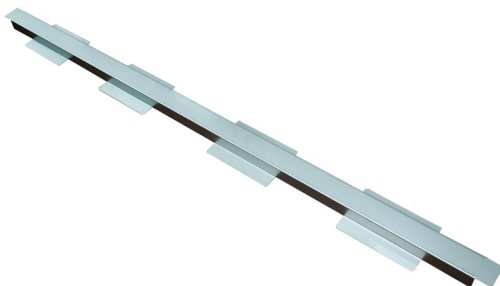
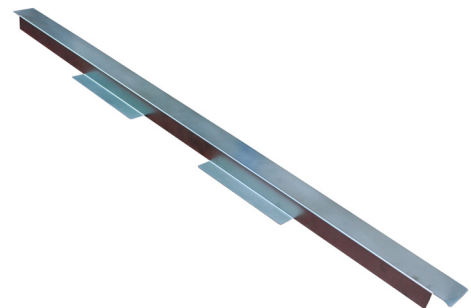
TSSBT50
1 DRUM TRAY

A tough and durable drum drip tray ideal for standing a 205ltr drum in to catch drips and spills caused during filling or dispensing. It is also suitable for storing lead acid batteries and has 50ltr capacity.

Diametre	Height	Capacity	Weight	Shape
870mm R	190mm	50 Litre	5kg	Round

TSSBFS2
JOINING STRIP FOR TSSBF2 -
1260MM X 60MM (WINGS 135MM) X 35MM

This metal joining strip is purchased in multiples of 1.26m lengths and is used to cover the gap created when 2 or more poly sump floors are joined together. It is advised that you discuss your requirements with us prior to ordering.



TSSBFS4
JOINING STRIP FOR TSSBF2 -
1660MM X 60MM (WINGS 135MM) X 35MM

This metal joining strip is purchased in multiples of 1.66m lengths and is used to cover the gap created when 2 or more poly sump floors are joined together. It is advised that you discuss your requirements with us prior to ordering.

TSSBFC
SUMP CONNECTOR FOR FLOOR BUND /
SPILL DECK RANGE 79MM X 40MM –
1" BSP CONNECTOR

These threaded connectors enable you to join the sumps of poly sump flooring together and allow any spilt liquid to flow from one sump to another. It is advised that you discuss your requirements with us prior to ordering.



SWDP
SPUNWELD DRAIN OUTLET AND PLUG –
3/4 INCH BSP FEMALE

Spun Welded to Any Yellow Bund for drainage of spills for all Yellow Secondary Containment Pallets, IBC Bunds, Spill Decks / Floor Bund and Trays.

TSSBF4KIT1
1200L SUMP FLOOR KIT - RECTANGLE

This kit provides a 3320mm x 2520mm fully contained 4 section rectangular low profile (150mm) storage/bunded work area and comes complete with sump connectors (holes are pre-drilled) and joining strips. Once assembled you have a storage/bunded work area that can accommodate up to 4 x 1000ltr standard IBCs making this a very practical and cost-effective storage/bunded workspace solution. The total sump capacity is 1200ltr.

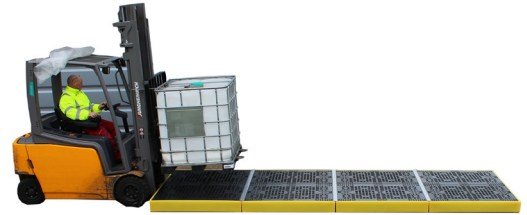
EXTERNAL SIZE PER SECTION:	1660mm L x 1260mm W x 150mm H
ASSEMBLED SIZE:	3320mm L x 2520mm W x 150mm H
N° OF CONTAINERS:	up to 4 x 1000ltr IBC
SUMP CAPACITY:	300ltr per section, 1200ltr per kit
COLOUR:	Yellow
TARE WEIGHT:	38kg per section
UDL:	2000kg per section
APPROVAL:	DIBt Z-40.22-398



TSSBF4KIT2 1200L SUMP FLOOR KIT - INLINE

This kit provides a 5040mm x 1660mm fully contained 4 in a line low profile (150mm) storage/bunded work area and comes complete with sump connectors (holes are pre-drilled) and joining strips. Once assembled you have a storage/bunded work area that can accommodate up to 4 x 1000ltr standard IBCs making this a very practical and cost-effective storage/bunded workspace solution. The total sump capacity is 1200ltr.

EXTERNAL SIZE PER SECTION:	1660mm L x 1260mm W x 150mm H
ASSEMBLED SIZE:	5040mm L x 1660mm W x 150mm H
N° OF CONTAINERS:	up to 4 x 1000ltr IBC
SUMP CAPACITY:	300ltr per section, 1200ltr per kit
COLOUR:	Yellow
TARE WEIGHT:	38kg per section
UDL:	2000kg per section
APPROVAL:	DIBt Z-40.22-398



TSSBFR COMPACT SPILL DECK RAMP

- Ideal for confined areas requiring ramp access
- Ramp attaches to spill deck for extra stability
- Tough single piece moulded polyethylene

Length	Width	Height	Weight	Max Load
650mm	800mm	160mm	8kg	1000kg

TSSBFR2 LARGE SPILL DECK RAMP

- Gentle incline for heavier loads
- Suitable for hand trolley and pallet jack
- Raised moulded grips to reduce slippage
- Seamless design for maximum sump security
- Polyethylene construction for maximum strength

Length	Width	Height	Weight	Max Load
1740mm	1000mm	160mm	28kg	1000kg

