

H-D5014

Self-Draining Emergency Safety Shower

ANSI compliant self-draining emergency safety shower with open stainless steel eye/face wash, suitable for hot climates.

The design allows standing water to drain away from the standpipe to prevent it being heated beyond tepid temperatures.

The valve is situated directly above the water inlet; the bleed pipe is fitted above this so standing water can drain to the ground preventing overheating from solar radiation and removing the risk of further injury to the operator.

With galvanised powder coated mild steel pipework.



*Eye/facewash drain & bowl assembly (H-DA002)
& foot treadle included (H-DA003)*

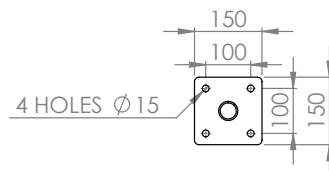
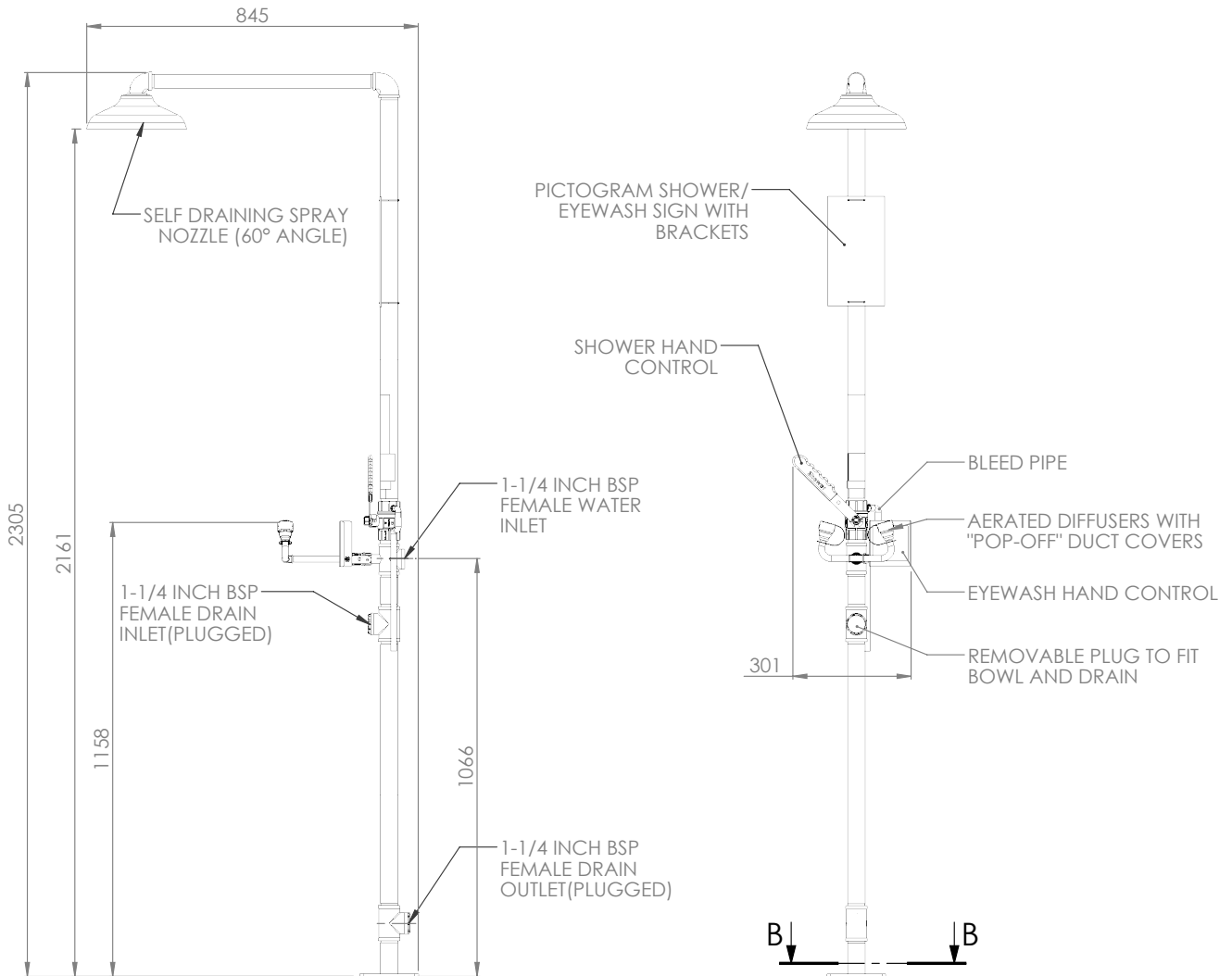
Specifications

MATERIALS OF CONSTRUCTION	
PIPEWORK AND FITTINGS	Galvanised powder coated mild steel with 150lb medium wall tubulars and fittings
OPERATING VALVES	Chrome plated brass, two piece stay open valve
SHOWER SPRAY OUTLET	Nylon 6 nozzle
EYE/FACE WASH BOWL	Stainless steel
EYE WASH DIFFUSERS	Chrome plated with stainless steel mesh
STANDARD FINISH	Green powder coated
SERVICES	
WATER INLET	1 1/4" Female BSP
DESIGN OPERATING PRESSURE	2.0 to 6 BAR G (29 to 87 PSI)
MINIMUM FLOW AT OPERATING PRESSURE	Shower: 76 litres/minute minimum (20 US Gallons). Eye/face wash: 12 litres/minute minimum (3 US Gallons)
ENVIRONMENTAL OPERATING TEMPERATURE	
MINIMUM AMBIENT OPERATING TEMPERATURE	5° C (41° F)
MAXIMUM AMBIENT OPERATING TEMPERATURE	45° C (113° F)
OPERATIONAL	
SHOWER SPRAY OPERATION	Pull handle
EYE/FACE WASH OPERATION	Push plate or foot panel activation
WEIGHTS and DIMENSIONS	
DIMENSIONS - STANDARD ORIENTATION (WxDxH)	360mm (14.1in) x 840mm (33in) x 2100mm (82.6in)
WEIGHT (NO OPTIONS)	16kg (35lb)



SPILL STATION ASIA PTE LTD
61 Yishun Industrial Park A, UNIT #04-05, Singapore, 768767
T: +65 6555 3687 F: +65 6484 1170
E: steven@spillstation.com.sg
www.spillstation.com.sg

H-D5014 - Self-Draining Emergency Safety Shower



SECTION B-B
SCALE 1 : 15



SPILL STATION ASIA PTE LTD
61 Yishun Industrial Park A, UNIT #04-05, Singapore, 768767
T: +65 6555 3687 F: +65 6484 1170
E: steven@spillstation.com.sg
www.spillstation.com.sg

HUGHES



HUGHES-SAFETY.COM

Justrite Safety Group