



**SPILL STATION
ASIA PTE LTD
CATALOGUE 2025**

**SPILL
STATION**®



Spill Station Asia is dedicated to supplying you with the world's best environmental, health and safety solutions.

To ensure your best outcomes, we have assembled our range of best in quality solutions from the world's premier manufacturers.

With warehouse locations and a diverse distributor network across Southeast Asia, we assure that we have what you want, when you need it.

SPILL STATION ASIA IS THE LARGEST IMPORTER OF THE FOLLOWING BRANDS:

- Spill Station Absorbents & Spill Kits
- Hughes Safety Showers and Eyewash Equipment
- Justrite Safety Products
- Romold Secondary Containment Equipment
- Tobin Eyewash System
- SpillFix Absorbent Floor Sweep
- Blue Pacific Mineral Sponge
- StoreLAB Hazardous Storage Cabinets
- Solmha Equipment
- Safetec Neutralizers & Infection Control Products
- Antbac Water Preservation Concentrate
- Dirteeze Trade Wipes
- Schoeller Drain Covers, Barriers & Conical Plugs
- Notrax Ergonomic, Anit-fatigue, Safety & Hygiene Matting
- Spill Station Quickbund Portable Bunding Solutions



WAIVER/DISCLAIMER

Used absorbent materials are only to be disposed of in accordance with all of the appropriate government laws or regulations. Liquids absorbed by Spill Station® Absorbents maintain the same properties and handling requirements as prior to the spill. Spill Station® products are sold or supplied in absence of any warranties implied on the appropriateness of the product for any particular purpose except as required by relevant government authorities. Information contained herein does not constitute a warranty on Spill Station® products in any form. Information contained herein are only an approximation and to be used only as a guide and are subject to change. Spill Station® and the Spill Station® logo are registered trademarks and cannot be used without express written permission. All other trademarks are the property of their respective owners. Spill Station® Asia Pte Limited will not be liable for damages of any type either incidental or consequential that may arise out of the purchase, use, disposal or inability to use Spill Station® products.

CONTENTS

SPILLFIX GENERAL PURPOSE ORGANIC ABSORBENT	1
MINERAL SPONGE GRANULAR ABSORBENT	1
POLY GENERAL PURPOSE ABSORBENTS - PADS - ROLLS - MINI BOOMS / SOCKS	2
GENERAL PURPOSE SPILLFIX SPILL KITS	3-4
GENERAL PURPOSE SPILL KITS	5-7
HAZCHEM ABSORBENTS - PADS - ROLLS - MINI BOOMS / SOCKS	8
HAZCHEM SPILL KITS	9-12
OIL ONLY ABSORBENTS - PADS - ROLLS - BOOMS	13
OIL ONLY SPILL KITS	14-17
MARINE (SOPEP) OIL SPILL RESPONSE KIT	18
PPE & CLEAN-UP EQUIPMENT	19
WASTE BAGS	19
SPILL RESPONSE KIT OPTIONS	20
LABORATORY & MEDICAL SPILL KITS	21-23
GREEN-Z® SPILL CONTROL SOLIDIFIER / ALKY SOLIDIFIER / ACID LOCK SOLIDIFIER	24
SCHOELLER POLYURETHANE DRAINCOVER, BARRIERS & CONICAL PLUGS	25-26
SPILL STATION ROBUND BUNDING SOLUTION	26
DRUM HANDLING & DECANTING EQUIPMENT	27-29
SOLMHA DRUM PALLETISER TRUCK	30
SOLMHA IBC TIPPER	31
SOLMHA HEAVY-DUTY SCAFFOLD TUBE TRANSPORTER	32
SOLMHA CONFINED SPACE ENTRY BARRIER MANWAY	33
SOLMHA IBC LIFTING FRAME	34
SOLMHA ALUMINIUM CONTAINER ACCESS STILE	35
DIRTEEZE NON WOVEN DRY/WET TRADE WIPES	36
DIRTEEZE ROUGH & SMOOTH WET TRADE WIPES	36
PLASTIC STORAGE CABINETS (PSC)	37
QUICKBUND PORTABLE BUNDING	38
MAINTENANCE SPILL BERMS	39
4-WAY SPILL CONTAINMENT PALLETS	40
4-WAY IBC SPILL CONTAINMENT PALLETS	40
SPILL CONTAINMENT PALLETS	41-43
IBC SPILL CONTAINMENT UNITS - FORKLIFT POCKET DIMENSIONS	43-45
SPILL DECKS & FLOOR BUNDS	46-49

CONTENTS

DRIP AND STORAGE TRAYS	50
BINS, CARTS AND TROLLEY'S	51-53
PREMIUM RANGE SAFETY SHOWER AND EYEWASH EQUIPMENT	54-55
EMERGENCY TANK SHOWERS FOR ANY APPLICATION	56
MOBILE INTERIM SELF CONTAINED SAFETY SHOWERS AND EYEWASH EQUIPMENT	57
DECONTAMINATION SHOWERS	57
ACCESSORIES FOR PREMIUM RANGE OF SAFETY SHOWERS AND EYEWASH EQUIPMENT	58
SIGNAGE	59
SHOWER TEST KIT	60
SHOWER MODESTY CURTAIN	60
ESSENTIAL / ECONOMY RANGE COMBINATION SAFETY SHOWERS AND EYE/FACE WASH	61-62
WALL MOUNTED/PEDESTAL MOUNTED STAINLESS STEEL 304 EYE/FACE WASH	63
SELF-CONTAINED GRAVITY FED EYEWASH	64
ANTBAC WATER PRESERVATIVE CONCENTRATE	65
TOBIN EYEWASH SYSTEM	66-67
30 MINUTE FIRE RATED HAZARDOUS STORAGE CABINET	68-69
CABINETS & ACCESSORIES (JUSTRITE)	70-74
SAFETY CANS & CONTAINERS (JUSTRITE)	75-76
SAFETY CANS & CONTAINERS FOR WASTE RAGS & WIPES (JUSTRITE)	77-78
POLYETHYLENE DISPENSING CANS & SQUEEZE BOTTLES (JUSTRITE)	79
SAFETY CANS & CONTAINERS (JUSTRITE)	80-81
DRUM FUNNELS & EQUIPMENT (JUSTRITE)	81
CIGARETTE-BUTT RECEPTACLES (JUSTRITE)	82
HEAVY DUTY BUTT CANS (JUSTRITE)	83
DRY AREAS - HEAVY DUTY 479 CUSHION TRAX®	84
DRY AREAS - HEAVY DUTY 556 CUSHION EASE SOLID™	85
WET/DRY AND OILY AREAS - HEAVY DUTY 549 SAFETY STANCE™	86
348 SANI-MASTER™	87
POLYETHYLENE CHEMICAL COMPATIBILITY GUIDE	88
HAZCHEM SORBENT CHEMICAL SUITABILITY GUIDE	89

SPILLFIX General Purpose Organic Absorbent

Spills can happen anywhere, Spill Station offer two types of General Purpose Absorbent so the absorbent you get is right for the job. Both are 100% natural, highly absorbent and free of harmful chemical residues.



SPILLFIX GENERAL PURPOSE ORGANIC ABSORBENT

- Contains no harmful dust to ensure a safe spill cleanup.
- Reduce clean up time and disposal costs by more than half.
- One 50L bag absorbs as much as 4 x 20kg bags of "kitty litter".
- A 50 litre bag will absorb up to 60 litres of spill.
- Made from an annually renewable resource.
- No chemical residues.
- EPA approved.
- Fast acting.

0A50L 50 Litre Bag SpillFix GP Absorbent

0A15L 15 Litre Bag SpillFix GP Absorbent

It is estimated that the surface area of SpillFix Absorbent is approximately 0.6ha (6000 square metres) in a single litre. The large surface area is created by the hollow channel structure. This is how it can retain up to 5 times its own weight in liquids.



MINERAL Sponge Granular Absorbent

Specifically sized zeolite granules with the ability to absorb up to 75% of its own weight of liquid. This allows Mineral Sponge to be used in a number of areas but predominantly as an absorbent for spills of oil/fuel and liquid chemicals.



MINERAL SPONGE GRANULAR ABSORBENT

- Will not break down and become slippery when wet.
- Available in workplace safe 15kg & 9kg bags.
- Safer than clay based granules.
- Liquids stay "locked inside".
- Absorbs up to 50% more than "kitty litter"
- Meets EPA requirements for solid waste disposal

MS15 15Kg/22L Bag Super Absorbent Mineral Sponge

MS9 9Kg/14L Bag Super Absorbent Mineral Sponge



Poly General Purpose Absorbents - Pads - Rolls - Mini Booms / Socks

When you need a universal maintenance absorbent that is great value for money, our Poly GP range is perfect.

Made from virgin resin polypropylene, our absorbents do not have recycled content that can compromise strength and chemical resistance.

The heat welded dimples make sure you turn your liquid hazard into an easily managed solid fast. The spun bonded laminate provides extra strength and prevents shedding.

They are suitable to use with a wide range of chemicals including hydrocarbons, agricultural chemicals, coolant and even battery acid.

SPECIFICATIONS				
Item Code	Description	Size	Grade	UOM
GP403	Pads, dimpled, laminated, perforated	480x430mm	400gsm	100/bale
GP410	Pads, dimpled, laminated, perforated	480x430mm	200gsm	100/bale
GR411	Roll, dimpled, laminated, perforated	50mx500mm	200gsm	Each
GR412	Roll, dimpled, laminated, perforated	50mx1m	200gsm	Each
GC405	Spill containment pillow	450x450mm		10/pack
GB412	Spill containment boom	1.2mx75mm		10/bale
GB430	Spill containment boom	3.0mx75mm		10/bale

FEATURES

- Super absorbent polypropylene microfibres suitable for all non-aggressive chemicals.
- Can also be used with some acids and bases including battery acid.
- General purpose absorbents are made from 100% virgin resin polypropylene.
- Contains no recycled contaminants that can reduce strength, absorption and chemical resistance.
- All pads and rolls are laminated with low-lint spun woven cover stock.
- Pads and rolls in this range have heat bonded dimples for fast absorption.
- Pads are perforated to reduce use for small spills.
- The easy-tear perforation on all rolls make them convenient to use. Just tear off what you need.
- Colour coded grey for easy recognition and fast response.
- Dispensing boxes available at additional cost.



GENERAL PURPOSE SPILLFIX SPILL KITS

The SpillFix spill kits, featuring an organic absorbent, are perfect for diverse settings such as warehouses, factories, and construction sites. With two distinct types of absorbents, these kits ensure comprehensive liquid absorption from surfaces, distinguishing them from others on the market.

SK360SF 360 LITRE GENERAL PURPOSE SPILL KIT

Qty	Contents
2	50L Bag SpillFix Absorbent
20	75mm x 1200mm General Purpose Boom
250	General Purpose 200gsm Absorbent Pads
15	Contaminated Waste Bags
2	Oil Resistant Gloves
2	Disposable Apron
1	Lockable Weatherproof Container 350L & Labels
1	Instruction Sheet



SK360SFB 360 LITRE GENERAL PURPOSE SPILL KIT

Qty	Contents
2	50L Bag SpillFix Absorbent
20	75mm x 1200mm General Purpose Boom
250	General Purpose 200gsm Absorbent Pads
15	Contaminated Waste Bags
2	Oil Resistant Gloves
2	Disposable Apron
1	240L Spill Bin with Wheels & Labels
1	140L Spill Bin with Wheels & Labels
1	Instruction Sheet



SK200SF 200 LITRE GENERAL PURPOSE SPILL KIT

Qty	Contents
2	50L Bag SpillFix Absorbent
15	75mm x 1200mm General Purpose Boom
150	General Purpose 200gsm Absorbent Pads
10	Contaminated Waste Bags
2	Oil Resistant Gloves
2	Disposable Apron
1	240L Spill Bin with Wheels & Labels
1	Instruction Sheet



GENERAL PURPOSE SPILLFIX SPILL KITS



SK100SF 100 LITRE GENERAL PURPOSE SPILL KIT

Qty	Contents
1	50L Bag SpillFix Absorbent
8	75mm x 1200mm General Purpose Boom
100	General Purpose 200gsm Absorbent Pads
5	Contaminated Waste Bags
2	Oil Resistant Gloves
2	Disposable Apron
1	140L Spill Bin with Wheels & Labels
1	Instruction Sheet

SK40SF 40 LITRE GENERAL PURPOSE SPILL KIT

Qty	Contents
1	15L Bag SpillFix Absorbent
4	75mm x 1200mm General Purpose Boom
30	General Purpose 200gsm Absorbent Pads
2	Contaminated Waste Bags
2	Oil Resistant Gloves
2	Disposable Apron
1	Zip-top Orange Nylon Bag & Labels
1	Instruction Sheet



SK20SF 20 LITRE GENERAL PURPOSE SPILL KIT

Qty	Contents
1	15L Bag SpillFix Absorbent
2	75mm x 1200mm General Purpose Boom
15	General Purpose 200gsm Absorbent Pads
2	Contaminated Waste Bags
2	Oil Resistant Gloves
2	Disposable Apron
1	Zip-top Yellow Nylon Bag & Labels
1	Instruction Sheet

SK20SFB (BUCKET) 20 LITRE GENERAL PURPOSE SPILL KIT

Qty	Contents
1	250gm Tub SpillFix Absorbent
2	75mm x 1200mm General Purpose Boom
15	General Purpose 200gsm Absorbent Pads
2	Contaminated Waste Bags
2	Oil Resistant Gloves
2	Disposable Apron
1	20L Plastic Bucket & Labels
1	Instruction Sheet



GENERAL PURPOSE SPILL KITS

The absorbent components of these spill kits are crafted from polypropylene, renowned for its outstanding absorption rates, ensuring exceptional value for money. Specifically designed for general applications in workshops and factories, they effectively address spill management needs.

SK360GP 360 LITRE GENERAL PURPOSE SPILL KIT

Qty	Contents
25	75mm x 1200mm General Purpose Boom
300	General Purpose 200gsm Absorbent Pads
8	General Purpose Pillows 450mm x 450mm
15	Contaminated Waste Bags
2	Oil Resistant Gloves
2	Disposable Apron
1	Lockable Weatherproof Container 350L & Labels
1	Instruction Sheet



SK360GPB 360 LITRE GENERAL PURPOSE SPILL KIT

Qty	Contents
25	75mm x 1200mm General Purpose Boom
300	General Purpose 200gsm Absorbent Pads
8	General Purpose Pillows 450mm x 450mm
15	Contaminated Waste Bags
2	Oil Resistant Gloves
2	Disposable Apron
1	240L Spill Bin with Wheels & Labels
1	140L Spill Bin with Wheels & Labels
1	Instruction Sheet



SK360GPO 360 LITRE GENERAL PURPOSE SPILL KIT

Qty	Contents
25	75mm x 1200mm General Purpose Boom
300	General Purpose 200gsm Absorbent Pads
8	General Purpose Pillows 450mm x 450mm
15	Contaminated Waste Bags
2	Oil Resistant Gloves
2	Disposable Apron
1	95 Gallon Overpack & Labels
1	Instruction Sheet



SK240GP 240 LITRE GENERAL PURPOSE SPILL KIT

Qty	Contents
18	75mm x 1200mm General Purpose Boom
240	General Purpose 200gsm Absorbent Pads
12	Contaminated Waste Bags
2	Oil Resistant Gloves
2	Disposable Apron
1	240L Spill Bin with Wheels & Labels
1	Instruction Sheet

SK200GP
200 LITRE GENERAL PURPOSE SPILL KIT

Qty	Contents
15	75mm x 1200mm General Purpose Boom
200	General Purpose 200gsm Absorbent Pads
10	Contaminated Waste Bags
2	Oil Resistant Gloves
2	Disposable Apron
1	240L Spill Bin with Wheels & Labels
1	Instruction Sheet



SK120GP
120 LITRE GENERAL PURPOSE SPILL KIT

Qty	Contents
10	75mm x 1200mm General Purpose Boom
120	General Purpose 200gsm Absorbent Pads
6	Contaminated Waste Bags
2	Oil Resistant Gloves
2	Disposable Apron
1	140L Spill Bin with Wheels & Labels
1	Instruction Sheet

SK100GP
100 LITRE GENERAL PURPOSE SPILL KIT

Qty	Contents
8	75mm x 1200mm General Purpose Boom
100	General Purpose 200gsm Absorbent Pads
5	Contaminated Waste Bags
2	Oil Resistant Gloves
2	Disposable Apron
1	140L Spill Bin with Wheels & Labels
1	Instruction Sheet



SK80GPO
80 LITRE GENERAL PURPOSE SPILL KIT

Qty	Contents
6	75mm x 1200mm General Purpose Boom
80	General Purpose 200gsm Absorbent Pads
3	Contaminated Waste Bags
2	Oil Resistant Gloves
2	Disposable Apron
1	30 Gallon Overpack & Labels
1	Instruction Sheet

SK50GPO
50 LITRE GENERAL PURPOSE SPILL KIT

Qty	Contents
5	75mm x 1200mm General Purpose Boom
40	General Purpose 200gsm Absorbent Pads
3	Contaminated Waste Bags
2	Oil Resistant Gloves
2	Disposable Apron
1	20 Gallon Overpack & Labels
1	Instruction Sheet



SK40GP
40 LITRE GENERAL PURPOSE SPILL KIT

Qty	Contents
4	75mm x 1200mm General Purpose Boom
30	General Purpose 200gsm Absorbent Pads
2	Contaminated Waste Bags
2	Oil Resistant Gloves
2	Disposable Apron
1	Zip-top Orange Nylon Bag & Labels
1	Instruction Sheet

SK20GP
20 LITRE GENERAL PURPOSE SPILL KIT

Qty	Contents
2	75mm x 1200mm General Purpose Boom
15	General Purpose 200gsm Absorbent Pads
2	Contaminated Waste Bags
2	Oil Resistant Gloves
2	Disposable Apron
1	Zip-top Yellow Nylon Bag & Labels
1	Instruction Sheet



SK20GPB (BUCKET)
20 LITRE GENERAL PURPOSE SPILL KIT

Qty	Contents
2	75mm x 1200mm General Purpose Boom
15	General Purpose 200gsm Absorbent Pads
2	Contaminated Waste Bags
2	Oil Resistant Gloves
2	Disposable Apron
1	20L Plastic Bucket & Labels
1	Instruction Sheet

Hazchem Absorbents - Pads - Rolls - Mini Booms / Socks

When you are dealing with a wide variety of liquids on-site, precious time is wasted deciding which absorbent is right.

Spill Station Hazchem Absorbents can deal with a wide range of fluids from acids and solvents to pesticides.

This absorbent is available in a range of forms including rolls, pads, pillows and mini booms / socks.

See page 88 for a comprehensive chemical suitability guide.

SPECIFICATIONS				
Item Code	Description	Size	Grade	UOM
CP303	Pad, dimpled, laminated, perforated	480x430mm	400gsm	100/pack
CP310	Pad, dimpled, laminated, perforated	480x430mm	200gsm	100/pack
CR311	Roll, dimpled, laminated, perforated	50mx500mm	200gsm	Each
CR312	Roll, dimpled, laminated, perforated	50mx1m	200gsm	Each
CC305	Spill containment Pillow	450mx450mm		10/pack
CB312	Spill containment boom	1.2mx75mm		10/pack
CB330	Spill containment boom	3.0mx75mm		10/pack

FEATURES

- Super absorbent polypropylene microfibres provide broad chemical compatibility. (see page 88 for more details)
- Dust free and low lint make these products suitable for food and beverage manufacturing.
- All pads and rolls are laminated with low-lint spun woven cover stock.
- Hazchem absorbents are made from 100% virgin resin polypropylene.
- Pads and rolls in this range have heat bonded dimples to accelerate absorption
- Hazchem rolls and pads have easy-tear perforation for easy handling and use.
- Colour coded yellow for easy recognition and fast response.
- Dispensing boxes available at additional cost.



HAZCHEM SPILL KITS

The absorbent components of these spill kits are made from polypropylene. This material has excellent absorption rates and provide great value for money. They are perfect to use with a wide variety of liquids including most acids, bases, oils, solvents and fuels.

See page 88 for a comprehensive chemical suitability guide.



SK360EA 360 LITRE HAZCHEM SPILL KIT

Qty	Contents
25	75mm x 1200mm Hazchem Absorbent Boom
300	Hazchem 200gsm Absorbent Pads
8	Hazchem Pillows 450mm x 450mm
15	Contaminated Waste Bags
2	Neoprene Gloves
2	Disposable Apron
1	Lockable Weatherproof Container 350L & Labels
1	Instruction Sheet

SK360EAB 360 LITRE HAZCHEM SPILL KIT

Qty	Contents
25	75mm x 1200mm Hazchem Absorbent Boom
300	Hazchem 200gsm Absorbent Pads
8	Hazchem Pillows 450mm x 450mm
15	Contaminated Waste Bags
2	Neoprene Gloves
2	Disposable Apron
1	240L Spill Bin with Wheels & Labels
1	140L Spill Bin with Wheels & Labels
1	Instruction Sheet



SK360EA0 360 LITRE HAZCHEM SPILL KIT

Qty	Contents
25	75mm x 1200mm Hazchem Absorbent Boom
300	Hazchem 200gsm Absorbent Pads
8	Hazchem Pillows 450mm x 450mm
15	Contaminated Waste Bags
2	Neoprene Gloves
2	Disposable Apron
1	95 Gallon Overpack & Labels (TSSOP1)
1	Instruction Sheet

SK240EA 240 LITRE HAZCHEM SPILL KIT

Qty	Contents
18	75mm x 1200mm Hazchem Absorbent Boom
240	Hazchem 200gsm Absorbent Pads
12	Contaminated Waste Bags
2	Neoprene Gloves
2	Disposable Apron
1	240L Spill Bin with Wheels & Labels
1	Instruction Sheet





SK200EA 200 LITRE HAZCHEM SPILL KIT

Qty	Contents
15	75mm x 1200mm Hazchem Absorbent Boom
200	Hazchem 200gsm Absorbent Pads
10	Contaminated Waste Bags
2	Neoprene Gloves
2	Disposable Apron
1	240L Spill Bin with Wheels & Labels
1	Instruction Sheet

SK120EA 120 LITRE HAZCHEM SPILL KIT

Qty	Contents
10	75mm x 1200mm Hazchem Absorbent Boom
120	Hazchem 200gsm Absorbent Pads
6	Contaminated Waste Bags
2	Neoprene Gloves
2	Disposable Apron
1	140L Spill Bin with Wheels & Labels
1	Instruction Sheet



SK100EA 100 LITRE HAZCHEM SPILL KIT

Qty	Contents
8	75mm x 1200mm Hazchem Absorbent Boom
100	Hazchem 200gsm Absorbent Pads
5	Contaminated Waste Bags
2	Neoprene Gloves
2	Disposable Apron
1	140L Spill Bin with Wheels & Labels
1	Instruction Sheet



SK80EAO
80 LITRE HAZCHEM SPILL KIT

Qty	Contents
6	75mm x 1200mm Hazchem Absorbent Boom
80	Hazchem 200gsm Absorbent Pads
3	Contaminated Waste Bags
2	Neoprene Gloves
2	Disposable Apron
1	30 Gallon Overpack & Labels
1	Instruction Sheet



SK50EAO
50 LITRE HAZCHEM SPILL KIT

Qty	Contents
5	75mm x 1200mm Hazchem Absorbent Boom
40	Hazchem 200gsm Absorbent Pads
3	Contaminated Waste Bags
2	Neoprene Gloves
2	Disposable Apron
1	20 Gallon Overpack & Labels
1	Instruction Sheet

SK40EA
40 LITRE HAZCHEM SPILL KIT

Qty	Contents
4	75mm x 1200mm Hazchem Absorbent Boom
30	Hazchem 200gsm Absorbent Pads
2	Contaminated Waste Bags
2	Neoprene Gloves
2	Disposable Apron
1	Zip-top Blue Nylon Bag & Labels
1	Instruction Sheet





SK20EA
20 LITRE HAZCHEM SPILL KIT

Qty	Contents
2	75mm x 1200mm Hazchem Absorbent Boom
15	Hazchem 200gsm Absorbent Pads
2	Contaminated Waste Bags
2	Neoprene Gloves
2	Disposable Apron
1	Zip-top Yellow Nylon Bag & Labels
1	Instruction Sheet

SK20EAB (BUCKET)
20 LITRE HAZCHEM SPILL KIT

Qty	Contents
2	75mm x 1200mm Hazchem Absorbent Boom
15	Hazchem 200gsm Absorbent Pads
2	Contaminated Waste Bags
2	Neoprene Gloves
2	Disposable Apron
1	20L Plastic Bucket & Labels
1	Instruction Sheet



SK10EAB (BUCKET)
10 LITRE BATTERY SPILL KIT

Qty	Contents
1	75mm x 1200mm Hazchem Absorbent Boom
10	Hazchem 200gsm Absorbent Pads
1	Acid Neutralizing Polymer Shaker 142g
2	Contaminated Waste Bags
2	Neoprene Gloves
2	Disposable Apron
1	10L Plastic Bucket & Labels
1	Instruction Sheet



Oil Only Absorbents - Pads - Rolls - Booms

Spill Station Oil Only Absorbents have the unique property of repelling water and only absorbing oils and fuels. This makes them suitable for use on both land and water surfaces.

All pads and rolls are dimpled and laminated for superior strength and absorption.

The heat welded dimples promote rapid absorption so that you can turn your liquid hazard into an easily managed solid fast.

The easy-tear perforations in our pads and rolls mean that you only use what you need.

SPECIFICATIONS				
Item Code	Description	Size	Grade	UOM
WP203	Oil only pad, dimpled, laminated, perforated	480x430mm	400gsm	100/bale
WP210	Oil only pad, dimpled, laminated, perforated	480x430mm	200gsm	100/bale
WR211	Oil only roll, dimpled, laminated, perforated	50mx500mm	200gsm	Each
WR212	Oil only roll, dimpled, laminated, perforated	50mx1m	200gsm	Each
WC205	Oil only spill containment Pillow	450x450mm		16/box
WB212	Spill containment boom for use on land	1.2mx75mm		10/bale
WB230	Spill containment boom for use on land	3.0mx75mm		10/bale
WB222	Marine spill floating absorbent boom	3.0mx125mm		4/bale
WB201	Marine spill floating absorbent boom	3.0mx200mm		4/bale

FEATURES

- Oil absorbent material are made from 100% virgin resin polypropylene and no recycled contaminants to reduce performance.
- They repel water (hydrophobic) and only absorb hydrocarbons such as oil, fuel & solvent.
- Oil absorbent rolls are perforated for easy handling.
- All pads and rolls are laminated with low lint spun woven cover stock.
- All pads and rolls have heat bonded dimples to accelerate absorption.
- Marine booms are double skinned and are fitted with snap hooks and rings.
- Dispensing boxes available at additional cost.
- Perforated.



OIL ONLY SPILL KITS

Featuring oil-only absorbents, these spill kits are specifically crafted for use on sealed surfaces, small waterways or drains, and workshop floors. These pads excel in proactive applications, such as placement under leaking machinery, ensuring only hydrocarbons are absorbed. Packaged in convenient kits, they provide all necessary items for effective spill management when incidents occur.

SK550W 550 LITRE OIL ONLY SPILL KIT

Qty	Contents
4	Oil Absorbent Marine Boom 125mm x 3000mm
300	Oil 200gsm Absorbent Pads
15	Oil Absorbent Pillows 450mm x 450mm
10	Contaminated Waste Bags
2	Disposable Overalls
2	Oil Resistant Gloves
2	Splash Resistant Goggles
1	Hard Bristle Broom
1	Sparkproof Shovel
1	20L Plastic Bucket
2	240L Spill Bin with Wheels & Labels



SK360W 360 LITRE OIL ONLY SPILL KIT

Qty	Contents
18	75mm x 1200mm Oil Absorbent Boom
250	Oil 200gsm Absorbent Pads
6	Oil Absorbent Pillows 450mm x 450mm
15	Contaminated Waste Bags
2	Oil Resistant Gloves
2	Disposable Apron
1	Lockable Weatherproof Container 350L & Labels
1	Instruction Sheet

SK360WB 360 LITRE OIL ONLY SPILL KIT

Qty	Contents
18	75mm x 1200mm Oil Absorbent Boom
250	Oil 200gsm Absorbent Pads
6	Oil Absorbent Pillows 450mm x 450mm
15	Contaminated Waste Bags
2	Oil Resistant Gloves
2	Disposable Apron
1	240L Spill Bin with Wheels & Labels
1	140L Spill Bin with Wheels & Labels
1	Instruction Sheet



SK360W0
360 LITRE OIL ONLY SPILL KIT

Qty	Contents
18	75mm x 1200mm Oil Absorbent Boom
250	Oil 200gsm Absorbent Pads
6	Oil Absorbent Pillows 450mm x 450mm
15	Contaminated Waste Bags
2	Oil Resistant Gloves
2	Disposable Apron
1	95 Gallon Overpack & Labels (TSSOP1)
1	Instruction Sheet



SK240W
240 LITRE OIL ONLY SPILL KIT

Qty	Contents
15	75mm x 1200mm Oil Absorbent Boom
200	Oil 200gsm Absorbent Pads
12	Contaminated Waste Bags
2	Oil Resistant Gloves
2	Disposable Apron
1	240L Spill Bin with Wheels & Labels
1	Instruction Sheet

SK200W
200 LITRE OIL ONLY SPILL KIT

Qty	Contents
10	75mm x 1200mm Oil Absorbent Boom
200	Oil 200gsm Absorbent Pads
10	Contaminated Waste Bags
2	Oil Resistant Gloves
2	Disposable Apron
1	240L Spill Bin with Wheels & Labels
1	Instruction Sheet



SK120W
120 LITRE OIL ONLY SPILL KIT

Qty	Contents
8	75mm x 1200mm Oil Absorbent Boom
100	Oil 200gsm Absorbent Pads
6	Contaminated Waste Bags
2	Oil Resistant Gloves
2	Disposable Apron
1	140L Spill Bin with Wheels & Labels
1	Instruction Sheet

SK100W
100 LITRE OIL ONLY SPILL KIT

Qty	Contents
6	75mm x 1200mm Oil Absorbent Boom
80	Oil 200gsm Absorbent Pads
5	Contaminated Waste Bags
2	Oil Resistant Gloves
2	Disposable Apron
1	140L Spill Bin with Wheels & Labels
1	Instruction Sheet



SK80W0
80 LITRE OIL ONLY SPILL KIT

Qty	Contents
5	75mm x 1200mm Oil Absorbent Boom
60	Oil 200gsm Absorbent Pads
3	Contaminated Waste Bags
2	Oil Resistant Gloves
2	Disposable Apron
1	30 Gallon Overpack & Labels
1	Instruction Sheet

SK50W0
50 LITRE OIL ONLY SPILL KIT

Qty	Contents
4	75mm x 1200mm Oil Absorbent Boom
40	Oil 200gsm Absorbent Pads
3	Contaminated Waste Bags
2	Oil Resistant Gloves
2	Disposable Apron
1	20 Gallon Overpack & Labels
1	Instruction Sheet





SK40W 40 LITRE OIL ONLY SPILL KIT

Qty	Contents
4	75mm x 1200mm Oil Absorbent Boom
30	Oil 200gsm Absorbent Pads
2	Contaminated Waste Bags
2	Oil Resistant Gloves
2	Disposable Apron
1	Zip-top Red Nylon Bag & Labels
1	Instruction Sheet

SK20W 20 LITRE OIL ONLY SPILL KIT

Qty	Contents
2	75mm x 1200mm Oil Absorbent Boom
15	Oil 200gsm Absorbent Pads
2	Contaminated Waste Bags
2	Oil Resistant Gloves
2	Disposable Apron
1	Zip-top Yellow Nylon Bag & Labels
1	Instruction Sheet



SK20WB (BUCKET) 20 LITRE OIL ONLY SPILL KIT

Qty	Contents
2	75mm x 1200mm Oil Absorbent Boom
15	Oil 200gsm Absorbent Pads
2	Contaminated Waste Bags
2	Oil Resistant Gloves
2	Disposable Apron
1	20L Plastic Bucket & Labels
1	Instruction Sheet



MARINE (SOPEP) OIL SPILL RESPONSE KIT

Under Regulation 37 of MARPOL Annex I, oil tankers over 150 gross tonnage and all ships exceeding 400 gross tonnage must possess an approved Shipboard Oil Pollution Emergency Plan (SOPEP). To comply with this regulation, vessels under 400 feet require a 7-barrel (1100L) Marine Spill Kit, while those over 400 feet need a 12-barrel (1900L) Marine Spill Kit. Additionally, we've developed the (550L) Marine Spill Kit, providing versatility to disperse 1100L across various locations for comprehensive spill preparedness. These kits include a range of oil-only absorbents and personal protective equipment (PPE) to effectively address shipboard spills.



SK550-OF (4 BARREL) MARINE (SOPEP) OIL SPILL RESPONSE KIT

Qty	Contents
4	Oil Absorbent Marine Boom 125mm x 3000mm
300	Oil 200gsm Absorbent Pads
15	Oil Absorbent Pillows 450mm x 450mm
10	Contaminated Waste Bags
2	Disposable Overalls
2	Oil Resistant Gloves
2	Splash Resistant Goggles
1	Hard Bristle Broom
1	Sparkproof Shovel
1	20L Plastic Bucket
1	Lockable Weatherproof Container 350L & Labels

SK1100-OF (7 BARREL) MARINE (SOPEP) OIL SPILL RESPONSE KIT

Qty	Contents
8	Oil Absorbent Marine Boom 125mm x 3000mm
600	Oil 200gsm Absorbent Pads
20	Oil Absorbent Pillows 450mm x 450mm
1	Oil Absorbent Roll 50m x 500mm
20	Contaminated Waste Bags
2	Disposable Overalls
2	Oil Resistant Gloves
2	Splash Resistant Goggles
1	Hard Bristle Broom
1	Sparkproof Shovel
1	20L Plastic Bucket
1	Lockable Weatherproof Container 1000L



SK1900-OF (12 BARREL) MARINE (SOPEP) OIL SPILL RESPONSE KIT

Qty	Contents
16	Oil Absorbent Marine Boom 125mm x 3000mm
800	Oil 200gsm Absorbent Pads
30	Oil Absorbent Pillows 450mm x 450mm
2	Oil Absorbent Roll 50m x 500mm
20	Contaminated Waste Bags
2	Disposable Overalls
2	Oil Resistant Gloves
2	Splash Resistant Goggles
1	Hard Bristle Broom
1	Sparkproof Shovel
1	20L Plastic Bucket
1	Lockable Weatherproof Container 1400L



PPE & CLEAN-UP EQUIPMENT

HAND PROTECTION

Item Code	Description
X-NEO	Chemical Resistant Neoprene Gloves
X-ORG	Oil Resistant PVC Gloves
X-ORG-E	Oil Resistant PVC Gauntlets
X-DLG	Disposable Latex Gloves
X-NDG	Disposable Nitrile Gloves



EYE PROTECTION

Item Code	Description
X-IRG	Safety Glasses
X-GOG	Splash Goggles

PROTECTIVE CLOTHING

Item Code	Description
X-TDO	Disposable Overall
X-PEA	LDPE Disposable Apron



WASTE COLLECTION EQUIPMENT

Item Code	Description
X-SCOOP	Flat Bottom Scoop [GREEN]
X-DPB	Dustpan & Brush Set [SMALL]
X-BRM	Hard Bristle Yard Broom
X-HSH	Sparkproof Shovel

Waste Bags

A Range of Contaminated/Hazardous Waste Bags, Clinical Waste bags and Bio-Hazard Bags; All our Bags are manufactured to industry requirements for thickness and disposal.

SPECIFICATIONS

Item	Details
X-BAT	HAZARDOUS WASTE BAG 600 X 700 X 0.04MM THICKNESS - LDPE WITH CABLE TIES
X-CWB	CLINICAL WASTE BAG 700 X 550mm X 0.05MM THICKNESS - LDPE WITH CABLE TIES
X-BWB120	BIOHAZARD WASTE BAG YELLOW-TO SUIT 120L/140L TWO WHEEL BIN-(700+300)MM x1200MM - 0.05MM-LDPE
X-BWB240	BIOHAZARD WASTE BAG YELLOW - TO SUIT 240L TWO WHEEL BIN - (970 +300)MM x 1500MM - 0.05MM-LDPE



CUSTOM SPILL KIT

Looking for a different type of kit?

We offer the flexibility to customize spill kits according to your specific requirements. Whether for your workplace, warehouse, job site, or vessel, we can tailor a kit to suit your needs. Our range includes General Purpose, Hazchem, and Oil/Fuel sorbents, which can be packed into polyethylene cabinets, storage containers, overpacks, and trolleys for convenient on-site storage and use.

You can enhance your kit by adding more pads, booms, pillows, or rolls to meet your required absorbent capacity. Additionally, we can include additional equipment to facilitate easier, quicker, and safer cleanup operations.



LABORATORY & MEDICAL SPILL KITS

Due to the diverse range of substances found in laboratories, our kits feature the most universally compatible absorbent material available. Designed to accommodate a wide array of substances, except for hydrofluoric acid, this absorbent ensures versatility and effectiveness in managing spills across various laboratory settings.

ZTSSBHS BIO-HAZARD SPILL KIT

- 1 500ml Bio Hazard Absorbent Powder
- 1 100ml Bottle Clinical Detergent
- 1 Face Mask & Eye Shield
- 1 Scoop and Scraper
- 1 Disposable Gloves (Pair)
- 1 LOPE Disposable Apron
- 1 Clinical Waste Bags & Ties
- 2 Hygienic Skin Wipes



ZTSSCNK CYTOTOXIC BODY FLUID SPILL KIT

- 1 Body Fluid Solidifying Polymer
- 1 Polymer Impregnated Absorbent Pad
- 5 Absorbent Sheets
- 1 Facemask & Eyeshield
- 1 Protective Disposable Gown
- 2 Disposable Gloves (Pair)
- 1 Labelled 10L Pail
- 1 Scoop and Scraper
- 2 Cytotoxic Waste Bags
- 1 Clinical Detergent 100ml
- 1 Overshoe and Hairnet (Pair)
- 2 "Caution Spill" Sign

ZTSSVBX VOMBOX VOMIT CLEANUP KIT

- 1 10L Body Fluid Clean Up Powder
- 1 Resealable Container
- 1 PPE/Spill Clean Up Pouch
- 3 Disposable Apron
- 3 Scoop and Scraper
- 3 Facemask / Eyeshield
- 3 Disposable Gloves (Pair)
- 3 Hygienic Skin Wipes
- 3 Clinical Waste Disposable Bags
- 1 Clinical Detergent 200ml
- 1 Instruction Sheet



**ZTSSFNK
FORMALIN SPILL RESPONSE KIT**

- 1 Formalin Neutralising Absorbent Polymer
- 1 Fluid Solidifying Polymer
- 5 Absorbent Sheets
- 2 Facemask & Eyeshield
- 1 Protective Disposable Apron
- 1 Disposable Nitrile Gloves (Pair)
- 1 Labelled 10L Pail
- 1 Scoop and Scraper
- 2 Clinical Waste Bags
- 1 Overshoe and Hairnet (Pair)
- 1 "Caution Spill" Sign
- 1 Instruction Sheet



**ZTSSGNK
GLUTARALDEHYDE SPILL RESPONSE KIT**

- 1 Glutaraldehyde Pre-treatment Powder
- 1 Fluid Solidifying Polymer
- 5 Absorbent Sheets
- 1 Facemask & Eyeshield
- 1 Protective Disposable Apron
- 1 Disposable Gloves (Pair)
- 1 Labelled 10L Pail
- 1 Scoop and Scraper
- 2 Clinical Waste Bags
- 1 Overshoe and Hairnet (Pair)
- 1 "Caution Spill" Sign
- 1 Instruction Sheet

**ZTSSLNK
LABORATORY NEUTRALISE SPILL KIT**

- 1 Acid Neutralising Absorbent Polymer
- 1 Alkali Neutralising Absorbent Polymer
- 1 Multi-purpose Absorbent Powder
- 2 Protective Disposable Aprons
- 5 Absorbent Sheets
- 2 Disposable Gloves (Pair)
- 1 Labelled 10L Pail
- 2 Facemasks and Eyeshield
- 1 Scoop and Scraper
- 2 Clinical Waste Bags
- 2 Overshoe and Hairnet (Pair)
- 2 "Caution Spill" Sign
- 1 Instruction Sheet



ZTSSPNK
PERACETIC ACID SPILL RESPONSE KIT

- 1 Acid Neutralising Absorbent Polymer
- 5 Absorbent Sheets
- 1 Dust Mask & Splash Goggles
- 1 Protective Disposable Apron
- 2 Disposable Nitrile Gloves (Pair)
- 1 Labelled 10L Pail
- 1 Scoop and Scraper
- 2 Clinical Waste Bags
- 1 Overshoe and Hairnet (Pair)
- 2 "Caution Spill" Sign
- 1 Instruction Sheet



ZTSSBNK
ALKALI SPILL RESPONSE KIT

- 1 Alkali Neutralising Absorbent Polymer
- 5 Absorbent Sheets
- 2 Facemask and EYESHIELD
- 2 Protective Disposable Apron
- 2 Disposable Nitrile Gloves (Pair)
- 1 Labelled 10L Pail
- 1 Scoop and Scraper
- 2 Clinical Waste Bags
- 1 Overshoe and Hairnet (Pair)
- 2 "Caution Spill" Sign
- 1 Instruction Sheet



ZTSSANK
ACID SPILL RESPONSE KIT

- 1 Acid Neutralising Absorbent Polymer
- 5 Absorbent Sheets
- 2 Facemask and EYESHIELD
- 2 Protective Disposable Apron
- 2 Disposable Nitrile Gloves (Pair)
- 1 Labelled 10L Pail
- 1 Scoop and Scraper
- 2 Clinical Waste Bags
- 2 Overshoe and Hairnet (Pair)
- 2 "Caution Spill" Sign
- 1 Instruction Sheet



Green-Z® Spill Control Solidifier

(Chlorine-Free Formula)



At times, workers may be unintentionally exposed to blood and bodily fluid spills along with other harmful substances such as toxic chemicals, biological hazards, and chemotherapy agents. To help reduce those exposure risks, rely on Green-Z® for improved safety in your spill clean-up operations.

- Contains fast-acting, superabsorbent polymers
- Chlorine-free (safe for use on chemotherapy, glutaraldehyde and mercury spills)
- Eliminates splashing by solidifying and turning spills into semi-solid (gel) mass
- Cost-effective clean-up solution
- Single-Use Pouches Bottles

SPECIFICATIONS	
Order No.	Description Case
42019	Green-Z® 21g single-use pouch 100/case
42010	Green-Z® 5 oz. shaker top bottle 24/case
42012	Green-Z® 15 oz. shaker top bottle 12/case



Alky Solidifier

Rapidly Neutralizes & solidifies high pH spills

- Ammonium Hydroxide
- Potassium Hydroxide
- Sodium Hydroxide



Sprinkle Alky directly onto the spill, covering it completely. The spill will turn blue, then yellow when it is safely neutralized. Once it becomes a semi-solid gel, it is ready for clean-up with a scoop and scraper.

SPECIFICATIONS	
Item No.	Description
BNP142	ALKALI NEUTRALISING ABSORBENT POLYMER SHAKER TOP BOTTLE 142G
BNP425	ALKALI NEUTRALISING ABSORBENT POLYMER SHAKER TOP BOTTLE 425G
BNP425/12	ALKALI NEUTRALISING ABSORBENT POLYMER SHAKER TOP BOTTLE 425G BOX OF 12

Acid Lock Solidifier

Rapidly neutralizes & solidifies low pH spills

- Acetic Acid
- Nitric Acid
- Hydrochloric Acid
- Sulfuric Acid



Sprinkle Acid Lock directly onto the spill, covering it completely. The spill will turn pink, then yellow when it is safely neutralised. Once is becomes a semi-solid gel, it is ready for a cleanup with a scoop & scraper.

SPECIFICATIONS	
Item No.	Description
ANP142	ACID NEUTRALISING ABSORBENT POLYMER SHAKER TOP BOTTLE 142G
ANP425	ACID NEUTRALISING ABSORBENT POLYMER SHAKER TOP BOTTLE 425G
ANP425/12	ACID NEUTRALISING ABSORBENT POLYMER SHAKER TOP BOTTLE 425G BOX OF 12

SCHOELLER POLYURETHANE DRAINCOVER:

Ideal for quick sealing of manhole shafts with surface leaked liquid. Also suitable for preventive use during transport, loading and unloading as well as transfer of hazardous substances

- Strong adhesive on the bottom side to ensure liquid tight sealing
- Two handles on each side for safe and quick handling
- Reusable, can be cleaned with soap and water

POLYURETHANE DRAINCOVER	
Item Code	Description
TSS0BY45	Polyurethane Draincover: has a sticky bottom side. The upper side is out of a Polyester Silicon layer for a better protection and better resistance. Handles on both sides for easy use. Re- usable. Resistant to oil and most chemicals. 45 cm Diameter - Thickness 0.8 cm
TSS0BY050	Polyurethane Draincover: has a sticky bottom side. The upper side is made out of a Polyester Silicon layer for better protection and resistance. Handles on both sides for easy use. Reusable. Resistant to oil and most chemicals. Dimensions 50 cm x 50 cm - Thickness 0.8 cm
TSS0BY070	Polyurethane Draincover: has a sticky bottom side. The upper side is made out of a Polyester Silicon layer for better protection and resistance. Handles on both sides for easy use. Reusable. Resistant to oil and most chemicals. Dimensions 70 cm x 70 cm - Thickness 0.8 cm
TSS0BY090	Polyurethane Draincover: has a sticky bottom side. The upper side is out of a Polyester Silicon layer for a better protection and better resistance. Handles on both sides for easy use. Re- usable. Resistant to oil and most chemicals. Dimensions 90 cm x 90 cm - Thickness 0,8 cm
TSS0BY120	Polyurethane Draincover: has a sticky bottom side. The upper side is made out of a Polyester Silicon layer for better protection and resistance. Handles on both sides for easy use. Reusable. Resistant to oil and most chemicals. Dimensions 120 cm x 120 cm - Thickness 0.8 cm



SCHOELLER POLYURETHANE BARRIERS:

Ideal for shutting off or quickly discharging randomly spilled chemical products before entering vents or manholes.

- Strong adhesive on the underside to ensure sealing
- Top side reinforced with Mesh Coated Polyurethane and hand straps for safe and secure rapid handling
- Reusable, can be cleaned with soap and water
- Including Transport and storage Box
- Connecting end pieces: better sealing when connecting 2 barriers together

SPECIFICATIONS		
Item Code	Dimensions (mm)LxWxH	Weight (KG)
TSS0B45	450x45x45	1.7
TSS0RY05	2000x50x60	4
TSS0RY010	3000x100x70	12
TSS0RY07-03	3000x70x50	6
TSS0RY07-05	5000x70x50	10



SCHOELLER POLYURETHANE CONICAL PLUGS:

Ideal to quickly and effectively seal holes in drums, other containers, pipework etc.

- A range of conical plugs to allow you to quickly and effectively seal holes in drums, other containers, pipework etc
- Each plug has a removable handle which helps when installing and removing it
- Washable and reusable
- Each conical plug comes with a black storage bag (composition: polyurethane coating on a polyester frame)
- Resistance to chemical substances: No contraindication at: hydrofluoric acid, formaldehyde, hexane, methanol, glycol-propylene, petrol, kerosene

Attention with: Sulphuric acid (slight shrinkage), phenol 50°C (significant swelling), three-day tests.

SPECIFICATIONS			
Item Code	Diameter (mm)	Height (mm)	Weight (kg)
TSSOBK3570	Ø 35-70	160	0.4
TSSOBK6092	Ø 60-92	160	0.8
TSSOBK85120	Ø 85-120	160	1.5
TSSOBK120180	Ø 120-180	160	3.1
TSSOBK170230	Ø 170-230	160	5.6



SPILL STATION ROBUND BUNDING SOLUTION:

Converting any area, or even your whole workshop or warehouse, into a securely bunded area has just become simple. Unlike concrete and rubber alternatives, this new generation urethane bunding will not chip, split or crack. Each kit comes complete with sealant/adhesive and masonry anchors and step-by-step instructions. Pieces can be easily cut to size with a fine-tooth saw.

FEATURES

Robund is purpose made for bunding high traffic areas and has excellent chemical resistance properties.

SPECIFICATIONS	
Item Code	Size
TSSRPB1	1m x 150mm x 25mm(H)
TSSRPBC	(350x350) x 150 x 25mm(H)



PIU800
TEMPORARY TANK & DRUM REPAIR PUTTY

- Stop leaks from drums, and tanks at the source
- No surface or putty preparation is required
- Simply scoop putty out and press over the hole
- Adhesive and chemical resistant
- Effective up to .25 bar (8ft head pressure)
- Adheres to metal, plastic and glass
- Perfect addition to any Spill Response Kit
- Buys precious time and saves valuable liquids

Item Code	Name	Weight
PIU800	Plugitup Putty	800grams



TSSDF1
POLY DRUM FUNNEL

- Perfect solution for waste oil collection point
- Large stable surface area allows for controlled pouring
- Drain containers and oil filters before disposal
- Tough polyethylene construction for maximum durability

Item Code	Diameter	Height	Weight
TSSDF1	610mm	230mm	4kg



TSSOP1
OVERPACKS

- Superior strength with UV inhibitors
- Nestable for convenient storage
- Ideal weatherproof spill kit container

Item code	Capacity	Height	Diam Top	Diam Bot	Weight
TSSOP1	340 Litre	1020mm	830mm	683mm	22kg



DRUM HANDLING & DECANTING EQUIPMENT

OVERPACK (UN RATED 1H2 / X300 / S)

Item Code	Description
TSSR1690	A 361 litre (95 US gallon) UN rated overpack constructed from Yellow blow-molded, high-density polyethylene (HDPE) with UV inhibitors. A durable, lightweight, weather & chemical resistant with a screw-on lid. Ideal for safe storage, handling and transportation of hazardous materials, spill containment and cleanup of hazardous materials.
UN Rating	1H2/X300/S
Capacity	361 litre (95 US gallon)
Inside dimension	68.9cm top x 65cm bottom x 99.1cm height
Outside dimension	78.7cm diameter x 104.8cm height
Bottom Diameter	Large containers, cans and drums
Weight	22.5kg



OVERPACK (UN RATED 1H2 / X300 / S)

Item Code	Description
TSSR1661	A 246 litre (65 US gallon) UN rated overpack constructed from Yellow blow-molded, high-density polyethylene (HDPE) with UV inhibitors. Durable, lightweight, weather & chemical resistant with a screw-on lid. Ideal for safe storage, handling and transportation of hazardous materials, spill containment and cleanup of hazardous materials.
UN Rating	1H2/X300/S
Capacity	246 litres (65 US gallons)
Inside dimension	68.9cm top x 65.9cm bottom x 85.8cm height
Outside dimension	78.7cm diameter x 85.7cm height
Bottom Diameter	Large containers, cans and drums
Weight	20.4kg



OVERPACK (UN RATED 1H2 / X120 / S)

Item Code	Description
TSSR1601	A 113.6 litre (30 US gallon) UN rated overpack constructed from Yellow blow-molded, high-density polyethylene (HDPE) with UV inhibitors. Durable, lightweight, weather & chemical resistant with a screw-on lid. Ideal for safe storage, handling and transportation of hazardous materials, spill containment and cleanup of hazardous materials.
UN Rating	1H2/X120/S, 1H2/Y180/S
Capacity	113.6 litre (30 US gallon)
Inside dimension	50.5cm top x 41.3cm bottom x 71.8cm height
Outside dimension	57.2cm diameter x 72cm height
Able to hold	Small bottles, cans. carboys and 20L pails
Weight	8.2Kg



OVERPACK (UN RATED 1H2 / X57 / S)

Item Code	Description
TSSR1650	A 75.7 litre (20 US gal) UN rated overpack constructed from Yellow blow-molded, high-density polyethylene (HDPE) with UV inhibitors. Durable, lightweight, weather & chemical resistant with a screw-on lid. Ideal for safe storage, handling and transportation of hazardous materials, spill containment and cleanup of hazardous materials.
UN Rating	1H2/X57/S
Capacity	75.7 litre (20 US gallon)
Inside dimension	49.3cm top x 41.6cm bottom x 50.8cm height
Outside dimension	51.7cm diameter x 41.6cm bottom x 52.7cm height
Able to hold	Small bottles, cans. carboys and 20L pails
Weight	5.9kg





TSSBT230 MOBILE DISPENSING STATION

- Safely move 205L drums from vertical to horizontal
- Genuine single person operation. No forklift required
- Lockable 3rd wheel for easy manoeuvring
- Single piece moulded polyethylene with 230L sump
- Double ratchet straps for extra load security
- DIBt Z-40.22-398 APPROVAL



Length	Width	Height	Weight	Sump	Max Load
1600mm	740mm	640mm	42kg	230 Litre	300kg



POLY RACKERS

- Decant from 205 litre drums in a safe bunded area
- Huge 400L sump makes recovering spilled liquids easy
- Seamless design for maximum sump security
- Racker (base unit) and Stacker sold separately

TSSDBC POLY STACKER

Length	Width	Height	Weight	Sump	Max Load
1240mm	795mm	370mm	13kg	NIL	600kg

TSSDB4 POLY RACKER

Length	Width	Height	Weight	Sump	Max Load
1390mm	1250mm	490mm	50kg	400 Litre	1250kg

TSSDL2 DRUM TOPPER

- Prevent corrosion of drums stored outside
- Locks onto the drum but is easily removed when required
- Slanted lid prevents buildup of rainwater
- Made of UV stabilised polyethylene

Item Code	Description	Size
TSSDL2	Secure Polyethylene 205L Drum Lid	630(D)x160(H)mm x2kg



TSSPDDH POLY DRUM DOLLY

- Ideal for mobile fluid collection and vertical dispensing
- Avoid spills by taking your drum to the job
- Collect incidental spills and prevent slip hazard
- Overall sump height 255mm for ease of loading
- Sturdy handle and rotating lockable castors

Length	Width	Height	Weight	Sump	Max Load
725mm	725mm	990mm	15.5kg	30 Litre	300kg

DRUM PALLETISER TRUCK

S-SMDPT



The drum palletiser truck reduces operator strain and removes the man-handling of drums when loading/unloading drums and barrels from pallets.

Suitable for all standard-sized drums and barrels, this piece of equipment will save you time and prevent any accidents on-site. The unit is fitted with stabilising wheels at the rear for easy manoeuvrability. Manually moving drums and barrels has never been more easy and straightforward.

SPECIFICATION:

- Designed for loading and unloading 210-litre drums and barrels onto pallets or platforms
- Solid plastic wheels for ease of maintenance
- Welded steel construction
- High-quality powder-coated finish
- Supplied with a Declaration of Conformity

KEY FEATURES:

- Used for loading/unloading drums and barrels
- Hinged clamp attachment for use with plastic drums supplied separately
- Auto clamp positively locks on the drum rim

ADVANTAGES:

- Reduces operator strain by up to 100%
- Stops man-handling of drums and barrels when loading/unloading pallets

CERTIFICATION:

- Supplied with Declaration of Conformity to all relevant standards

SPECIFICATIONS

Drum Palletiser Truck, welded steel construction with Solid plastic wheels, 250KG Capacity, for Loading and unloading 200-209L Plastic/Steel Drums

Item Code	Dimensions	Weight kg
S-SMDPT	610mm(L) x 1660mm(W) x 1100mm(H)	29kg
250KG CAPACITY	Shipping Dimensions	Packing Weight kg
	800mm(L) x 1660mm(W) x 1250mm(H)	34kg

IBC TIPPER

S-SMIBCT



The IBC Tipper is a mechanism to maximise the dispensing of your IBC while avoiding waste, environmental and safety hazards.

It can also be customised for use with steel barrels and plastic drums. It works by tilting the IBC as its contents are used, thereby increasing pressure at the tap and allowing more liquid to flow out. This can prevent significant financial losses when pouring valuable liquids.

SPECIFICATION:

- Designed for standard IBCs: 1000mm x 1200mm
- Maximise the dispensing of your IBC or drum
- Supplied with a Declaration of Conformity

KEY FEATURES:

- Can be used for IBC units, plastic drums or steel barrels using relevant attachments
- Pressure increases as the tipper angle increases ensuring all contents are removed
- Castors can be added to make the unit portable

ADVANTAGES:

- Self-emptying using spring-loaded mechanism
- Avoid waste, environmental and safety hazards
- Get the most out of your IBC or drum
- Maintenance-free

CERTIFICATION:

- Supplied with Declaration of Conformity to all relevant standards



SPECIFICATIONS

IBC Tipper Unit, Welded Construction, Self Emptying Spring-Loaded Mechanism, Tiling 135 degrees to maximise the dispensing of liquid from IBC

Item Code	Dimensions	Weight kg
S-SMIBCT	1210mm(L) x 1010mm(W) x 325mm(H)	42kg
	Shipping Dimensions	Packing Weight kg
	1251mm(L) x 1050mm(W) x 350mm(H)	47kg



S-SMIBCT-D

IBC Tipper Drum attachment to allow usage of 200-209L Plastic/Steel Drums



S-SMIBCTC

IBC Tipper Castor Wheels (Set of 4) - For retrofitting to IBC Tipper

HEAVY-DUTY SCAFFOLD TUBE TRANSPORTER

S-SMSTT



Avoid injury and improve efficiency on your worksite with our scaffold pole transporter. A robust design Makes light work of up to 800kg in one load.

This unit benefits from front and rear castors and large solid rubber wheels for added stability, and requires very little effort to manoeuvre – even across uneven ground. Rubber top plates also minimise the risk of pole slippage.

SPECIFICATION:

- 800kg maximum capacity
- Two front and rear stability castors
- Powder-coated paint finish



KEY FEATURES:

- Heavy-duty solid rubber tyres
- Rubber top plates to prevent slippage
- Manufactured in Britain

ADVANTAGES:

- Compatible with most scaffolding applications
- Requires very little effort to manoeuvre

CERTIFICATION:

- Supplied with Declaration of Conformity to all relevant standards



SPECIFICATIONS

Heavy Duty Scaffold Tube Transporter, 800KG Capacity, 1310 (L)X 700(W) X 680(H) MM - 55KG - Powder coated Red With Rubber top plates

Item Code	Dimensions	Weight kg
S-SMSTT	1310mm(L) x 700mm(W) x 680mm(H)	55kg
800KG CAPACITY	Shipping Dimensions	Packing Weight kg
	1360mm(L) x 800mm(W) x 820mm(H)	65kg

CONFINED SPACE ENTRY BARRIER MANWAY

S-SMMAB



Our confined space entry barriers are designed to physically prevent unauthorised access to manway holes and vertical ladders.

The telescopic design makes this product suitable for multiple-sized applications. The stickers can be written on with a white board or permanent marker to suit your requirements.

SPECIFICATION:

- Telescopic design
- Customisable sticker
- Heavy-duty lock to prevent access
- Supplied with a Declaration of Conformity

KEY FEATURES:

- Designed to physically prevent unauthorised access
- Easily use white board markers to add special information

ADVANTAGES:

- Telescopic design to suit multiple-sized applications
- Supplied with heavy-duty push lock and two keys
- Powder-coated finish

CERTIFICATION:

- Supplied with Declaration of Conformity to all relevant standards



SPECIFICATIONS

Confined Space Entry Barrier - Manway - Telescopic Designed for multiple-sized application to prevent unauthorised access to manway holes



Item Code	Dimensions	Weight kg
S-SMMAB	600mm(L) x 500mm(W) x 200mm(H)	5kg
	Shipping Dimensions	Packing Weight kg
	250mm(L) x 620mm(W) x 520mm(H)	6kg

IBC LIFTING FRAME

S-SMIBCLF



Our IBC lifting frame has been specifically designed to remove dangerous lifts of IBC containers onshore and offshore.

Made in-house, our frame has been constructed to the highest standards using the best materials on offer. Not to be confused with similar products, this product has been tried and tested using real life scenarios both onshore and offshore.

SPECIFICATION:

- Supplied flat-packed
- Easy to assemble in minimal time
- Supplied with a Declaration of Conformity

KEY FEATURES:

- Safe transfer and restraint of IBC containers
- Modular design for easy transfer between sites
- Design compensates for C of G differences
- Modular assembly allows for replacement of individual components
- Compact design allows for easy storage
- Safe use instructions provided

ADVANTAGES:

- Easy to assemble and use
- Design eliminates potential sideways slippage of IBC container

CERTIFICATION:

- Supplied with Declaration of Conformity to all relevant standards



SPECIFICATIONS

Modular IBC Lifting Frame for Safe Transfer / Restraint / Lifting of IBC Containers Onshore and Offshore 2000kg Lift Capacity

Item Code	Dimensions	Weight kg
S-SMIBCLF	1170mm(L) x 865mm(W) x 1780mm(H)	80kg
2000KG CAPACITY	Shipping Dimensions	Packing Weight kg
	1230mm(L) x 800mm(W) x 300mm(H)	85kg

ALUMINIUM CONTAINER ACCESS STILE

S-SMACAS



Cost-effective and lightweight step for accessing half-height baskets.

This unique adjustable ladder has a 150kg capacity and is suitable for accessing all low-level half-height containers, baskets and skips. Being of aluminium construction, this ladder can be used in any environment without the risk of rust or corrosion.

SPECIFICATION:

- Suitable for all containers with 75mm to 190mm-wide top section rail
- Lightweight aluminium easily lifted and used by one person
- Two hand-operated adjusters are screwed onto the top rail section of the basket or half-height, to provide a secure lock for the ladder

KEY FEATURES:

- One-piece access/egress solution for safely getting in and out of half-height containers, baskets & skips
- Suitable for most types of half-height containers
- Checkered material on step for maximum grip
- Handle on left side for use when in operation
- Easily adjusted threaded securing tighteners, to minimise movement during use

ADVANTAGES:

- Lightweight aluminium construction
- Easily lifted by one person

CERTIFICATION:

- Supplied with Declaration of Conformity to all relevant standards

SPECIFICATIONS

Half-height Container Access Stile - Min/Max Top Mounting Rail Size 75mm/190mm - Material: Aluminium

Item Code	Dimensions	Weight kg
S-SMACAS	440mm(L) x 485mm(W) x 930mm(H) (810mm high without handle)	12kg
150KG CAPACITY	Shipping Dimensions	Packing Weight kg
	950mm(L) x 500mm(W) x 450mm(H)	20kg



**LAX60B150
NON WOVEN TRADE WIPES LAX 60**

- LAX60 Industrial Multi Purpose Wipes
- Very strong material
- Low-Linting, Highly absorbent
- Can be used with solvents and cleaning agents
- Cost-in-use savings over rags
- Portable and pop-up box
- Perfect as white cotton rag and mixed replacement
- Construction and manufacturing
- An excellent disposable towel for construction site kitchens
- Cleans up oils, lubricants and water spills
- Sheet Size – 30 x 50cm
- Colour – White
- Case – 150 sheets box x1 case



**MAX110B160
NON WOVEN TRADE WIPES MAX 110**



- MAX110 Heavy Duty Industrial Wiper
- Premium quality MAX110 110gsm non woven wiper
- Ultra high water and oil absorbency
- Ultra high tensile and abrasion resistance
- Bio-degradable
- Re-usable properties
- Leaves no lint after wiping
- For rugged surface wiping including metal shavings
- Working with solvents
- Where higher wet strength is required
- Engineering workshops, garages
- Manufacturing, mobile workers
- Clean-up of heavier spills and liquids
- Single ply pop-up box
- Sheet Size – 30 x 42cm
- Colour – Blue
- Case – 160 Sheets box x 1 case

DIRTEEZE ROUGH & SMOOTH WET TRADE WIPES

(T U B)

Dirteeze Code	Features
DGPC180	<ul style="list-style-type: none"> • Pre-moistened so no need for water • Dual-sided with micro-beaded side for agitating grime, smooth side for wiping away • High strength for use on rougher surfaces • Skin-patch tested as safe to use on skin • Contains aloe vera for keeping hands moisturised • Conforms with EC1223/2009 Cosmetic Directive
	<p>Applications</p> <ul style="list-style-type: none"> • Use on hands, tools machinery and most surfaces • Mobile workers, construction trade, engineering
	<p>Removes the following and more:</p> <ul style="list-style-type: none"> • Fast removal of Semi-cured silicone sealant and decorators caulk • Oils and greases • Adhesives • Water-based paints • Inks • Expanding foam • Dirt and grime





TSSPSC1

Rotationally moulded storage cabinet with a hinged lockable door and a shelf above the plastic mesh deck great storage cabinet for small cans, tins, and containers with a sump capacity of 17ltr.

Length	Width	Height	Weight	Sump	Shelf UDL
534mm	420mm	990mm	15kg	17 Litre	12kg



TSSPSC2

Rotationally moulded storage cabinet with a hinged lockable door and a shelf above the plastic mesh deck great storage cabinet for small cans, tins, and containers with a sump capacity of 70ltr.

Length	Width	Height	Weight	Sump	Shelf UDL
650mm	570mm	1650mm	44kg	70 Litre	52kg

TSSPSC3

Rotationally moulded storage cabinet with a hinged lockable door is designed to allow you to store 1 x 205ltr drum in a vertical position and still have room to fit a small pump.

The drum sits on a plastic mesh deck above a 225ltr sump

Length	Width	Height	Weight	Sump	Pallet UDL
920mm	720mm	1835mm	50kg	225 Litre	300kg



TSSPSC4

Rotationally moulded storage cabinet with a hinged lockable door and a shelf above the plastic mesh deck great storage cabinet for small cans, tins, and containers with a sump capacity of 225ltr.

Length	Width	Height	Weight	Sump	Plt UDL	Shelf UDL
920mm	740mm	1835mm	60kg	225 Lt	300kg	52Kg

TSSPSC5

Rotationally moulded storage cabinet with a hinged lockable door and a shelf above the plastic mesh deck great storage cabinet for small cans, tins, and containers with a sump capacity of 100ltr.

Length	Width	Height	Weight	Sump	Plt UDL	Shelf UDL
920mm	740mm	1520mm	55kg	100 Lt	300kg	52Kg



QUICKBUND PORTABLE BUNDING

The Australian made Quickbund Portable Bunding System provides a safe and secure area for dealing with a wide range of liquids including acids, bases, oils & fuels.

Manufactured from heavy duty HRL-36, the high-frequency welded seams ensure no leaking and provide maximum strength.

The fold down walls allow for vehicle and forklift access.

The Quickbund can be erected in seconds without the need for tools. Simply position and unfold.

The Quickbund can be manufactured to your specific requirements.

Lightweight and portable, the Quickbund is ideal for all field applications including drill rigs, generators, refuelling & transformers.

The Quickbund can be fitted with a portable oil/water filter for outdoor use.

Please request a Chemical Compatibility Guide.



SPECIFICATIONS				
Item Code	Dimensions	Capacity	Pack Size	Weight
TSSQB1	1.9x1.9x0.3m	1,000L	600x700x100mm	10kg
TSSQB2	2.5x2.5x0.3m	2,000L	700x700x100mm	20kg
TSSQB3	4.1x2.5x0.3m	3,000L	700x700x150mm	26kg
TSSQB4	3.2x1.9x0.3m	1,800L	700x700x100mm	19kg
TSSQB5	3.2x3.2x0.3m	3,000L	700x700x150mm	26kg
TSSQB6	8.5x4.5x0.3m	11,400L	800x900x300mm	67kg
TSSQB7	10x5.0x0.3m	15,000L	800x900x350mm	75kg
TSSQB8	15x5.5x0.3m	24,700L	800x900x400mm	86kg
TSSQB9	5.0x5.0x0.3m	7,500L	700x800x200mm	45kg
TSSQB10	4.1x4.1x0.3m	5,000L	700x700x150mm	32kg





MAINTENANCE SPILL BERMS

Compact and flexible spill containment deploys instantly in the shop or field

- Quickly contain minor spills and leaks during temporary storage of drums, machine parts, batteries, and equipment
- Lightweight PVC coated fabric provides broad UV and chemical resistance
- Encased urethane foam sidewalls offer easy roll-through access without the need for a ramp
- Walls quickly spring back into place with no memory loss
- No assembly required—simply unfold and use
- Anchor berm in place using the brass grommets in each corner. Anchor stakes not included.
- Order optional grates to keep products and machinery above fluid

SPECIFICATIONS

Capacity Gal/L	Interior W x L	Folded W x L x H	Sidewall Height	Model
5/19	2 x 2 ft (0.6 x 0.6 m)	30 x 30 x 2 in (762 x 762 x 51 mm)	2 in (51 mm)	J-28414
10/38	2 x 2 ft (0.6 x 0.6 m)	30 x 30 x 4 in (762 x 762 x 102 mm)	4 in (102 mm)	J-28400
10/38	2 x 4 ft (0.6 x 1.2 m)	30 x 54 x 2 in (762 x 1372 x 51 mm)	2 in (51 mm)	J-28416
20/76	2 x 4 ft (0.6 x 1.2 m)	16 x 30 x 16 in (406 x 762 x 406 mm)	4 in (102 mm)	J-28402
40/151	2 x 8 ft (0.6 x 2.4 m)	28 x 28 x 16 in (711 x 711 x 406 mm)	4 in (102 mm)	J-28404
20/76	4 x 4 ft (1.2 x 1.2 m)	30 x 30 x 6 in (762 x 762 x 152 mm)	2 in (51 mm)	J-28418
40/151	4 x 4 ft (1.2 x 1.2 m)	20 x 24 x 16 in (508 x 610 x 406 mm)	4 in (102 mm)	J-28406
60/227	4 x 6 ft (1.2 x 1.8 m)	24 x 24 x 16 in (610 x 610 x 406 mm)	4 in (102 mm)	J-28408
40/151	4 x 8 ft (1.2 x 2.4 m)	30 x 30 x 12 in (762 x 762 x 305 mm)	2 in (51 mm)	J-28421
80/303	4 x 8 ft (1.2 x 2.4 m)	36 x 36 x 16 in (914 x 914 x 406 mm)	4 in (102 mm)	J-28410
44/167	6 x 6 ft (1.8 x 1.8 m)	24 x 24 x 16 in (610 x 610 x 406 mm)	2 in (51 mm)	J-28422
90/341	6 x 6 ft (1.8 x 1.8 m)	38 x 38 x 16 in (965 x 965 x 406 mm)	4 in (102 mm)	J-28412
135/511	10 x 11 ft (3.0 x 3.4 m)	28 x 28 x 16 in (711 x 711 x 406 mm)	2 in (51 mm)	J-28424
220/833	10 x 18 ft (3.0 x 5.5 m)	30 x 30 x 16 in (762 x 762 x 406 mm)	2 in (51 mm)	J-28426

Note: For exterior dimension on 4-in (102-mm) models, add 12-in (305-mm) to width and length. For exterior dimension on 2-in (51-mm) models, add 6-in (152-mm) to width and length



28400 and 1642S



28416 and 1642IB



Roll-over sidewalls offer easy drum placement.



Folds up for easy storage.



28416

28414

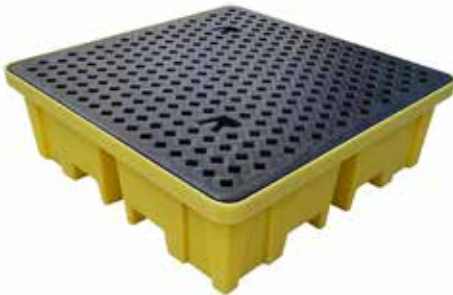
4-WAY SPILL CONTAINMENT PALLETS

TSSBP2FW 4-WAY 2-DRUM SPILL PALLET

- Designed for safe and compliant storage of 2x205L drums
- Made from 100% corrosion free polyethylene
- Four-way forklift access for loaded Spill Pallets
- EPA compliant sumps in all Spill Pallets
- Broadband chemical resistance including acids and bases
- Drain plugs available as an optional extra
- DIBt Z-40.22-398 APPROVAL

Length	Width	Height	Weight	Sump	Max Load
1220mm	820mm	450mm	27kg	230 Litre	1200kg

ROMOLD LTD®
SUPERIOR SECONDARY CONTAINMENT SOLUTIONS



TSSBP4FW 4-WAY 4-DRUM SPILL PALLET

- Designed for safe and compliant storage of 4x205L drums
- Seamless construction eliminates leaks
- Meets EPA sump requirements
- Broadband chemical resistance including acids and bases
- Four-way forklift access for loaded Spill Pallets
- Drain plugs fitted as standard
- DIBt Z-40.22-398 APPROVAL

Length	Width	Height	Weight	Sump	Max Load
1220mm	1220mm	390mm	40kg	250 Litre	1500kg

4-WAY IBC SPILL CONTAINMENT PALLETS

TSSBB1FW 4-WAY SINGLE IBC SPILL CONTAINMENT PALLET & GRATE

- Designed to hold 1 x IBC (1000L) tank
- Huge 1150L sump complies with EPA requirements
- Seamless design for maximum sump security
- Tough polyethylene construction for maximum durability
- Robust and chemically resistant polyethylene construction
- Four-way forklift access for loaded Spill Pallets
- Drain plugs available as an optional extra
- DIBt Z-40.22-398 APPROVAL

Length	Width	Height	Weight	Sump	Max Load
1340mm	1230mm	1090mm	71kg	1150 Litre	1500kg



TSSBB2FW 4-WAY DOUBLE IBC SPILL CONTAINMENT PALLET & GRATE

- Designed to hold 2 x IBC (1000L) tank or 8 x 250L drums
- Huge 1150L sump exceeds EPA requirements
- Robust and chemically resistant polyethylene construction
- Tough polyethylene construction for maximum durability
- Four-way forklift access for loaded Spill Pallets
- Drain plugs available as an optional extra
- DIBt Z-40.22-398 APPROVAL

Length	Width	Height	Weight	Sump	Max Load
2340mm	1225mm	610mm	91kg	1150 Litre	2500kg

**TSSBP1
1-DRUM SPILL PALLET**

- Designed for storage of 1 x 250L drum
- EPA compliant sumps in all Spill Pallets
- Small footprint for compliant storage in small areas
- Removable grate makes decontamination easy
- Drain plugs available as an optional extra
- DIBt Z-40.22-398 APPROVAL

Length	Width	Height	Weight	Sump	Max Load
900mm	700mm	525mm	22kg	225 Litre	300kg



**TSSBP2
2-DRUM SPILL PALLET**

- Designed for safe and compliant storage of 2 x 205L drums
- Made from 100% corrosion free seamless polyethylene
- Two-way forklift access
- EPA compliant sumps in all Spill Pallets
- Broadband chemical resistance including acids & bases
- Drain plugs available as an optional extra
- DIBt Z-40.22-398 APPROVAL

Length	Width	Height	Weight	Sump	Max Load
1220mm	820mm	330mm	23kg	240 Litre	650kg

**TSSBP3
3-DRUM SPILL PALLET**

- Designed for safe and compliant storage of 3 x 205L drums
- Seamless construction eliminates leaks
- Meets EPA sump requirements
- Broadband chemical resistance including acids & bases
- Drain plugs available as an optional extra
- DIBt Z-40.22-398 APPROVAL

Length	Width	Height	Weight	Sump	Max Load
1785mm	780mm	240mm	30kg	228 Litre	900kg



**TSSBP4L
4-DRUM SPILL PALLET**

- Designed for safe and compliant storage of 4 x 205L drums
- Made from 100% corrosion free polyethylene
- Two-way forklift access
- EPA compliant sumps in all Spill Pallets
- Broadband chemical resistance including acids & bases
- Drain plugs available as an optional extra
- DIBt Z-40.22-398 APPROVAL

Length	Width	Height	Weight	Sump	Max Load
1280mm	1285mm	275mm	29kg	230 Litre	1250kg

TSSBP4
4-DRUM EXTRA LARGE SPILL PALLET

- Designed for safe and compliant storage of 4 x 205L drums
- Made from 100% corrosion free polyethylene
- Two-way forklift access
- EPA compliant sumps in all Spill Pallets
- Rain covers and ezy-load ramps are also available
- Drain plugs available as an optional extra
- DIBt Z-40.22-398 APPROVAL

Length	Width	Height	Weight	Sump	Max Load
1310mm	1310mm	370mm	44kg	410 Litre	1250kg



TSSRB1
PALLET RACKING BUND

- Turn standard pallet racking into banded racking
- Prevent contamination of goods stored below
- Utilises the "dead space" between the beams
- Designed to provide easy access to pallets
- 100% polyethylene for broadband chemical resistance
- Drain plugs available as an optional extra

Length	Width	Height	Weight	Sump	Max Load
1310mm	1310mm	245mm	17kg	220 Litre	1250kg



TSSBP2RT
2-DRUM ROLL-TOP SPILL PALLET

- 100% corrosion free Polyethylene
- Hard covered banded store
- For 2 x 205ltr drums or smaller containers
- Lockable shutter door
- Integral base fork pockets
- Delivered fully assembled
- Drain plugs available as an optional extra

Length	Width	Height	Weight	Sump	Max Load
1450mm	990mm	1690mm	93kg	230 Litre	650kg

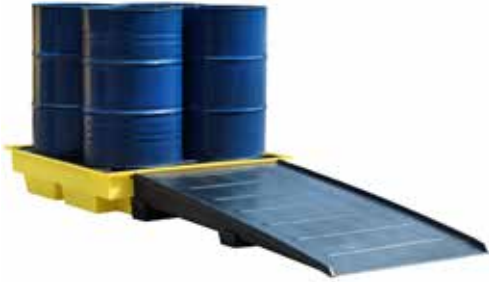


TSSBP4RT
4-DRUM ROLL-TOP SPILL PALLET

- Protect your load from weather and theft
- Key lockable ezy-lift Roll Top Cover 410 litre sump
- Suitable for holding 4 x 205L (44gal) drums
- Removable non-slip grates
- Raised lip helps to keep your load secure
- Delivered fully assembled
- Drain plugs available as an optional extra

Length	Width	Height	Weight	Sump	Max Load
1470mm	1420mm	2070mm	121kg	410 Litre	1250kg





SPILL PALLET RAMPS

These spill pallet ramps are made from tough polyethylene and are suitable to use with 4-drum and roll-top spill pallets

Item Code	Length	Width	Height	Weight	Max Load
TSSBP4R-(BFR3)	1740mm	1000mm	275mm	33kg	1000kg
TSSBP4RTR-(BFR5)	1740mm	1000mm	370mm	38kg	1000kg
TSSBP4RFW-(BFR4)	1740mm	1000mm	390mm	36kg	1000kg

IBC SPILL CONTAINMENT UNITS

TSSBB1
SINGLE IBC SPILL CONTAINMENT UNIT WITH GRATE

- Designed to hold 1 x IBC (1000L) tank
- Huge 1100L sump complies with EPA requirements
- Drain plugs available as an optional extra
- Seamless design for maximum sump security
- Tough polyethylene construction for maximum durability
- Dispensing wells, IBC funnels and covers also available
- DIBt Z-40.22-398 APPROVAL

Grate on top allowed for smaller drum & can be stored



Length	Width	Height	Weight	Sump	Max Load
1760mm	1350mm	710mm	91kg	1100L	2000kg

TSSBB2
DUAL IBC SPILL CONTAINMENT UNIT WITH GRATE

- Designed for 2 x IBC (1000L) tank or 8 x 250L drums
- Huge 1140L sump exceeds EPA requirements
- Drain plugs available as an optional extra
- Robust & chemically resistant polyethylene construction
- Dispensing wells, IBC funnels and covers also available



Length	Width	Height	Weight	Sump	Max Load
2550mm	1360mm	565mm	116kg	1140L	3000kg

TSSBB1T
DISPENSING WELLS FOR IBC STORAGE UNIT

- Attaches securely to any position around the bund
- Catches drips & directs any overflow back into the sump
- Big enough to hold 25 litre drums for safe decanting
- Ideally suited for storing connected hoses when not in use

Item Code	Length	Width	Height	Sump	Use With	Weight
TSSBB1T	525mm	545mm	855mm	86L	TSSBB1	8.5kg



TSSBB2T
DISPENSING WELLS FOR IBC STORAGE UNIT

- Attaches securely to any position around the bund
- Catches drips & directs any overflow back into the sump
- Big enough to hold 25 litre drums for safe decanting
- Ideally suited for storing connected hoses when not in use

Item Code	Length	Width	Height	Sump	Use With	Weight
TSSBB2T	530mm	520mm	520mm	86L	TSSBB2	5kg

IBC FUNNEL

- Large diameter for easy decanting into IBCs
- Avoid spills and keep the area free of slip hazards
- Tough polyethylene construction for maximum durability

Item Code	Description	Diameter	Width	Weight
TSSDF200	IBC Funnel With Lid	640mm	150mm	4kg



TSSBB1HCS
SINGLE IBC HARD COVER SPILL CONTAINMENT BUND

Manufactured from medium-density polyethylene this spill pallet, designed to hold 1 x 1000ltr IBC has a 0.6mm galvanised steel (powder coated paint finish) cover fitted with hinged doors and retaining catches to hold them open during loading and unloading. The metal cover is secured to the spill pallet by means of M8 dome head Allen bolts & nyloc nuts.



Length	Width	Height	Door Aperture	Weight	Sump	UDL
1840mm	1425mm	2405mm	1590mm H x 1165mm W	223kg	1100 L	2000kg

TSSBB2HCS
DUAL IBC HARD COVER SPILL CONTAINMENT BUND



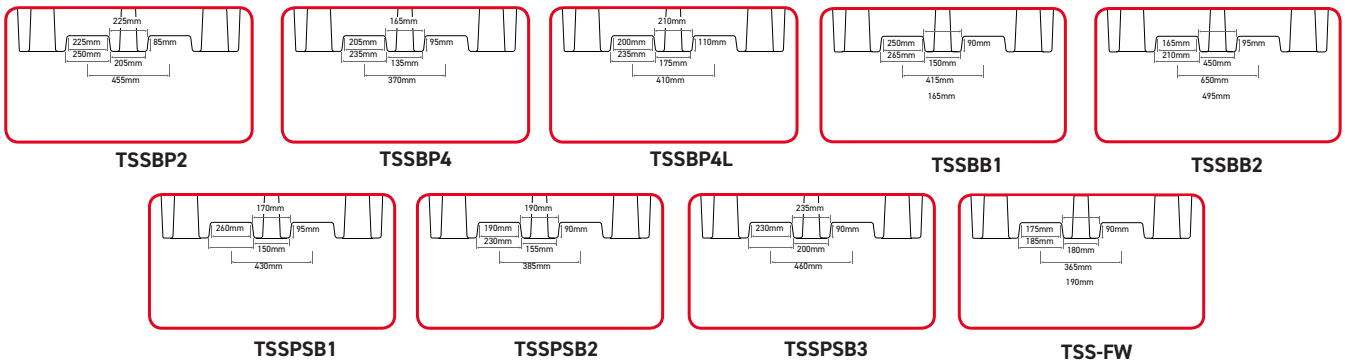
Manufactured from medium-density polyethylene this spill pallet, designed to hold 8 x 205ltr drums or 2 x 1000ltr IBC has a 0.6mm galvanised steel (powder-coated paint finish) cover with access via 2 steel sliding doors (fitted with a central lock). The galvanised steel cover is attached to the spill pallet by means of M8 dome head Allen bolts & nyloc nuts.

Length	Width	Height	Door Aperture	Weight	Sump	UDL
2625mm	1430mm	2110mm	1490mm H x 2365mm W	285kg	1140 L	3000kg

FORKLIFT POCKET DIMENSIONS

At Spill Station, we have assembled the most products to make your job as simple as possible. As a company focused on a solution based approach most of our spill pallets have forklift access. We believe this is paramount when choosing the right product for the right job.

This handy guide provides the information you need to ensure you get the correct spill pallet to suit the fork lift or pallet truck on hand.



Please note: the FW measurements refer to models TSSBP2FW, TSSBP4FW, TSSBB1FW and TSSBB2FW.



The Spill Deck is built tough and comes in three sizes. These Spill Decks can be configured to create non-slip banded liquid handling workstations and storage areas to fit your working environment. Two sizes of ramps are available to make loading the Spill Deck with pallet jacks and hand trolleys easy.

TSSBF1-(BB100) 1-DRUM FLOORBUND

- Ideal for small decanting or liquid collection area
- Low profile for ease of loading
- Can hold up to 10 x 25 litre containers
- Seamless design for maximum sump security
- Can be fitted with drain plugs if required
- Polyethylene construction for maximum durability
- DIBt Z-40.22-398 APPROVAL



Length	Width	Height	Weight	Sump	Max Load
920mm	720mm	175mm	15kg	100 Litre	300kg



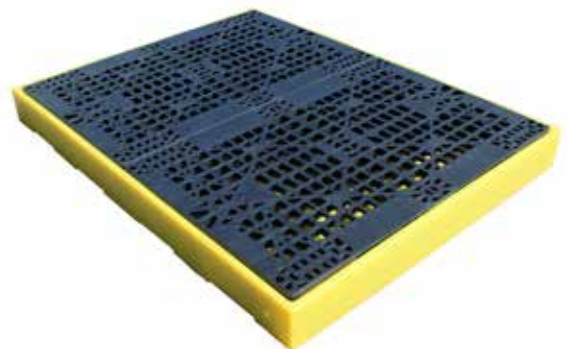
TSSBF2 2-DRUM SPILL DECK

- Ideal for small decanting or waste oil collection point
- Low profile for ease of loading
- Can be fitted with drain plugs if required
- Seamless design for maximum sump security
- Tough polyethylene construction for maximum durability
- Removable non-slip grates makes cleaning easy
- DIBt Z-40.22-398 APPROVAL

Length	Width	Height	Weight	Sump	Max Load
1260mm	860mm	150mm	20kg	130 Litre	1000kg

TSSBF4 4-DRUM SPILL DECK

- Designed to hold 4 x 205 litre drums
- Huge 300L sump complies with EPA requirements
- Can be fitted with drain plugs if required
- Seamless design for maximum sump security
- DIBt Z-40.22-398 APPROVAL



Length	Width	Height	Weight	Sump	Max Load
1660mm	1260mm	150mm	38kg	300 Litre	2000kg

TSSBF4S 4-DRUM IN-LINE SPILL DECK

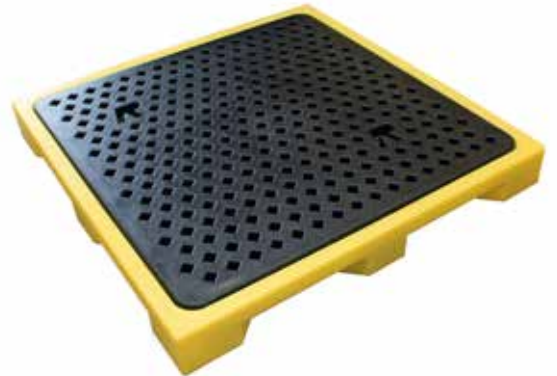
- Designed to hold 4 x 205 litre drums
- Low profile for ease of loading
- Can be fitted with drain plugs if required
- Seamless design for maximum sump security
- Corrosion-free polyethylene construction
- DIBt Z-40.22-398 APPROVAL



Length	Width	Height	Weight	Sump	Max Load
2610mm	895mm	150mm	42kg	300 Litre	2000kg

**TSSBF4X
4-DRUM FLOOR TRAY**

A low profile 4-drum floor tray which is only 150mm high and has additional bracing built into the base to create a rigid platform for the rotationally moulded grid mesh deck. This floor tray will accommodate up to 4 x 205ltr drums and has a UDL (Uniform Distributed Load) of 2000kg.



Length	Width	Height	Weight	Sump	Max Load
1310mm	1310mm	150mm	32kg	75 Litre	2000kg



**TSSBT50
1 DRUM TRAY**

A tough and durable drum drip tray ideal for standing a 205ltr drum in to catch drips and spills caused during filling or dispensing. It is also suitable for storing lead acid batteries and has 50ltr capacity.

Diameter	Height	Capacity	Weight	Shape
870mm R	190mm	50 Litre	5kg	Round

**TSSBFS2
JOINING STRIP FOR TSSBF2 -
1260MM X 62MM (WINGS 135MM) X 50MM**

This metal joining strip is purchased in multiples of 1.26m lengths and is used to cover the gap created when 2 or more poly sump floors are joined together. It is advised that you discuss your requirements with us prior to ordering.



**TSSBFS4
JOINING STRIP FOR TSSBF2 -
1660MM X 62MM (WINGS 135MM) X 50MM**

This metal joining strip is purchased in multiples of 1.66m lengths and is used to cover the gap created when 2 or more poly sump floors are joined together. It is advised that you discuss your requirements with us prior to ordering.

TSSBFC
SUMP CONNECTOR FOR FLOOR BUND /
SPILL DECK RANGE 79MM X 40MM -
1" BSP CONNECTOR

These threaded connectors enable you to join the sumps of poly sump flooring together and allow any spilt liquid to flow from one sump to another. It is advised that you discuss your requirements with us prior to ordering.



SWDP
SPUNWELD DRAIN OUTLET AND PLUG - 3/4
INCH BSP FEMALE

Spun Welded to Any Yellow Bund for drainage of spills for all Yellow Secondary Containment Pallets, IBC Bunds, Spill Decks / Floor Bund and Trays.

TSSBF4KIT1
1200L SUMP FLOOR KIT - RECTANGLE

This kit provides a 3320mm x 2520mm fully contained 4 section rectangular low profile (150mm) storage/bunded work area and comes complete with sump connectors (holes are pre-drilled) and joining strips. Once assembled you have a storage/bunded work area that can accommodate up to 4 x 1000ltr standard IBCs making this a very practical and cost effective storage/bunded workspace solution. The total sump capacity is 1200ltr.

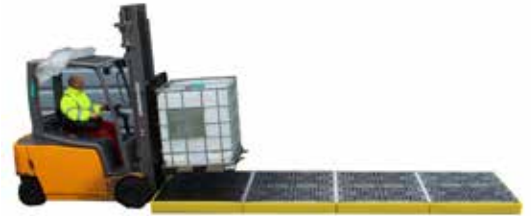
EXTERNAL SIZE PER SECTION:	1660mm L x 1260mm W x 150mm H
ASSEMBLED SIZE:	3320mm L x 2520mm W x 150mm H
Nº OF CONTAINERS:	up to 4 x 1000ltr IBC
SUMP CAPACITY:	300ltr per section, 1200ltr per kit
COLOUR:	Yellow
TARE WEIGHT:	38kg per section
UDL:	2000kg per section
APPROVAL:	DIBt Z-40.22-398





TSSBF4KIT2 1200L SUMP FLOOR KIT - INLINE

This kit provides a 5040mm x 1660mm fully contained 4 in a line low profile (150mm) storage/bunded work area and comes complete with sump connectors (holes are pre-drilled) and joining strips. Once assembled you have a storage/bunded work area that can accommodate up to 4 x 1000ltr standard IBCs making this a very practical and cost effective storage/bunded workspace solution. The total sump capacity is 1200ltr.



EXTERNAL SIZE PER SECTION:	1660mm L x 1260mm W x 150mm H
ASSEMBLED SIZE:	5040mm L x 1660mm W x 150mm H
Nº OF CONTAINERS:	up to 4 x 1000ltr IBC
SUMP CAPACITY:	300ltr per section, 1200ltr per kit
COLOUR:	Yellow
TARE WEIGHT:	38kg per section
UDL:	2000kg per section
APPROVAL:	DIBt Z-40.22-398



TSSBFR COMPACT SPILL DECK RAMP

- Ideal for confined areas requiring ramp access
- Ramp attaches to spill deck for extra stability
- Tough single piece moulded polyethylene

Length	Width	Height	Weight	Max Load
650mm	800mm	160mm	8kg	1000kg

TSSBFR2 LARGE SPILL DECK RAMP

- Gentle incline for heavier loads
- Suitable for hand trolley and pallet jack
- Raised moulded grips to reduce slippage
- Seamless design for maximum sump security
- Polyethylene construction for maximum strength



Length	Width	Height	Weight	Max Load
1740mm	1000mm	160mm	28kg	1000kg



TUFF STORAGE TRAYS

- Provides safe, banded storage for small drums and containers
- Ideal for use with batteries, drums, machine parts, etc
- Ribbed base design provides additional strength and spill clearance
- Chemical resistant rotomolded polyethylene for superior durability

Item code	Description	Capacity	Height	Width	Length	UDL	Weight
TSSGPT1	Medium Tuff Tray	100 Litres	295mm	730mm	730mm	250kg	6.5kg
TSSGPT2	Large Tuff Tray	230 Litres	295mm	730mm	1290mm	600kg	10kg



DRIP AND STORAGE TRAYS

- Designed for benchtop use
- Perfect for lab applications
- Spills drain safely to the sump
- Chemical resistant polyethylene

Item code	Capacity	Height	Length	Width	Weight
TSSTT9	11.5 Litres	50mm	790mm	400mm	1.2kg
TSSTT152	15 Litres	50mm	1000mm	400mm	1kg
TSSTT16	16 Litres	100mm	530mm	400mm	0.75kg
TSSTT81	25 Litres	50mm	1100mm	550mm	3kg
TSSTT28	28 Litres	120mm	645mm	490mm	1.3kg
TSSTTS	45 Litres	175mm	630mm	590mm	3kg
TSSTT64	64 Litres	120mm	800mm	800mm	2.6kg
TSSTT65	65 Litres	150mm	1000mm	550mm	2kg
TSSTT100	100 Litres	120mm	1000mm	1000mm	4kg
TSSTT120	144 Litres	120mm	1200mm	1200mm	5.5kg



TSSTT65



TSSTTS



TSSTT100



TSSTT9



TSSTT152



TSSTT16



TSSTT81



TSSTT28



TSSTT120



TSSTT64

SPILL TRAYS

These MiniBund spill trays are made from polyethylene for extra strength and chemical resistance. They have a removable grate to keep your containers above the spill and allow easy cleaning. They are available in a range of sizes from 20L to 60L. Perfect for storage of drums up to 25L. They can be used to create a safe liquid decanting area.

Item code	Capacity	Height	Length	Width	UDL	Weight
TSSST20	22 Litres	175mm	595mm	395mm	55kg	4kg
TSSST30	31 Litres	170mm	805mm	405mm	55kg	5kg
TSSST40	43 Litres	170mm	800mm	605mm	105kg	7.5kg
TSSST60	63 Litres	200mm	1000mm	605mm	205kg	10kg
TSSST70	70 Litres	315mm	804mm	608mm	150kg	9.5kg
TSSST100	104 Litres	185mm	1195mm	795mm	205kg	14kg



**TSSPSB1
LARGE STORAGE CONTAINERS**

Rotationally moulded from medium density UV stabilised polyethylene, 350L container is suitable for use with liquids or dry powders. It has fork channels for easy movement and Lockable Lid for security. Optional Additional Wheel kit can be added for easier movement. Items are Available in Yellow and Orange.

Item code	Capacity	Height	Length	Width	Weight
TSSPSB1	350 Litre	910mm	1265mm	855mm	28kg



**TSSPSB2
LARGE STORAGE CONTAINERS**



Rotationally moulded from medium density UV stabilised polyethylene, 1000L container is suitable for use with liquids or dry powders. It has fork channels for easy movement and Lockable Lid for security. Optional Additional Wheel kit can be added for easier movement. Items are Available in Yellow and Orange.

Item code	Capacity	Height	Length	Width	Weight
TSSPSB2	1000 Litres	975mm	1460mm	1010mm	38kg

**TSSPSB3
LARGE STORAGE CONTAINERS**

Rotationally moulded from medium density UV stabilised polyethylene, 1400L container is suitable for use with liquids or dry powders. It has fork channels for easy movement and Lockable Lid for security. Optional Additional Wheel kit can be added for easier movement. Items are Available in Yellow and Orange.

Item code	Capacity	Height	Length	Width	Weight
TSSPSB3	1400 Litres	1125mm	1630mm	1170mm	47kg



**TSSGPSC1
LARGE STORAGE CONTAINERS**



This static storage bin has a variety of uses from "grit bin" for your rock salt to a spill kit and it comes complete with push fit lid and fork pockets to aid movement. Come with a Lid and Lock for security and weather protection.

Item code	Capacity	Height	Length	Width	Weight	UDL
TSSGPSC1	600Litres	850mm	1150mm	1130mm	32kg	1000kg

**TSSGPSC2
LARGE STORAGE CONTAINERS**

This static storage bin has a variety of uses from "grit bin" for your rock salt to a spill kit and it comes complete with push fit lid and fork pockets to aid movement. Come with a Lid and Lock for security and weather protection.



Item code	Capacity	Height	Length	Width	Weight	UDL
TSSGPSC2	250 Litre	880mm	875mm	875mm	22kg	300kg



**TSSBT100
MAINTENANCE CARTS & TROLLEYS**

A compact trolley manufactured from medium density polyethylene ensures lightweight operation with the added benefit of excellent chemical resistance. Designed to carry 4 x 25ltr cans it can of course be used for a range of tasks, for ease of use it is fitted with rear swivel/brake castors.

Item code	Capacity	Height	Length	Width	Weight	UDL
TSSBT100	100 Litre	300mm	1000mm	700mm	15kg	100kg

**TSSST66WH
MAINTENANCE CARTS & TROLLEYS**

A robust mobile drip tray fitted with 4 x 50mm swivel castors, full width handle and a removable grid. This unit is ideal for transporting small containers from area to area, whilst still being able to contain drips and spills.



Item code	Capacity	Height	Length	Width	Weight	UDL
TSSST66WH	66 Litre	938mm	933mm	608mm	13.5kg	120kg



**TSSPC
MAINTENANCE CARTS & TROLLEYS**

Transport and dispense loose spill clean-up granules, or salt for de-icing paths etc. from this highly manoeuvrable cart which is fitted with front swivel brake castors and fixed back wheels. It comes complete with a disposal bag area with lid, plus brush and shovel storage points.

Item code	Capacity	Height	Length	Width	Weight	UDL
TSSPC	60 Litre	965mm	1360mm	710mm	38kg	NA

**TSSPWC4
MAINTENANCE CARTS & TROLLEYS**

Rotationally moulded from durable polyethylene this fully mobile (two large fixed rear wheels and two front, swivel and lockable castors) cabinet is fitted with a lockable door, comes complete with a height adjustable shelf and a recessed top (18ltr capacity) which can act as a temporary spill tray if a container of liquid becomes compromised.



Item code	Capacity	Height	Length	Width	Weight	UDL
TSSPWC4	8L UPTRAY	1075mm	640mm	725mm	27kg	NA



**TSSPMCXL4
MAINTENANCE CARTS & TROLLEYS**

For housekeeping or maintenance operations this robust cabinet is supplied on wheels with a roll holder and lockable cupboard. The TSSPMCXL4 is the largest of our lockable cabinet on wheels range. The unit comes complete with a roll dispenser capable of taking rolls up to 550mmØ x 520mm.

Item code	Capacity	Height	Length	Width	Weight	UDL
TSSPMCXL4	45L	1550mm	650mm	725mm	37kg	NA

2- WHEEL MOBILE BINS

All MASTEC bins and lids are built tough enough to withstand even the harshest conditions and come with a 10-year manufacturing warranty ensuring that you get the long-term performance that you need.

- Extra supports and webbing on rear full-width handle for greater strength
- Strong, one-piece handle design
- Recessed lid handles
- High quality UV-Stabilised HDPE construction
- Heavy-duty galvanized steel axle
- Solid rubber-tyred wheels with plastic injection hub
- Reduced lateral wheel movement for greater manoeuvrability
- Large base for greater stability

Item code	Description
X-BIN140YE	140L MOBILE BIN YELLOW BODY AND CHOICE OF COLOUR LID
X-BIN240YE	240L MOBILE BIN YELLOW BODY AND CHOICE OF COLOUR LID



SAFETY SHOWERS AND EYEWASH EQUIPMENT

PREMIUM RANGE

Item Code	Description
H-EXP18GS85G	Emergency Combination Safety Shower with Eye/ Face Wash

This floor mounted emergency safety shower constructed Marine 316 Stainless Steel, complete with an integrated eye/face wash unit, adheres to ANSI standards. Tailored for environments with moderate ambient temperatures and it offers a dependable safety solution for various industrial settings.

The Stocked Model is Versatile and allows for Top or Mid-Level water Inlet at 1-1/4 BSP Female.

SPECIFICATIONS	
OPERATING PRESSURE	2 to 6 BAR G / 29 to 87 PSI (higher supply pressures accommodated with the incorporation of the optional pressure reducing valve)
MINIMUM FLOW RATES	Shower: 76 L per minute / 20 US gal per minute Eye wash: 12 L per minute / 3 US gal per minute
AMBIENT OPERATING TEMPERATURE	MINIMUM 5C / 41F MAXIMUM 35C / 95F
Please see page 57-58 for optional accessories	

Item Code	Description
H-EXPSD18GS85G	Self-Draining Emergency Combination Safety Shower with Eye/Face Wash

This floor mounted self-draining emergency safety shower, constructed with Marine 316 Stainless Steel, features an integrated eye/face wash unit. Its innovative design facilitates the drainage of standing water away from the standpipe, ensuring the delivery of tepid water (16-36°C). Positioned directly above the water inlet, the valve is accompanied by a bleed pipe to enable the drainage of standing water into the ground, preventing the formation of stagnant water and potential overheating from solar radiation. This design mitigates the risk of further injury to the operator. Additionally, this unit is suitable for applications exposed to ambient temperatures of up to 45 degrees Celsius in direct sunlight.

The stocked model's bottom water Inlet at 1-1/4 BSP Female.

SPECIFICATIONS	
OPERATING PRESSURE	2 to 6 BAR G / 29 to 87 PSI (higher supply pressures accommodated with the incorporation of the optional pressure reducing valve)
MINIMUM FLOW RATES	Shower: 76 L per minute / 20 US gal per minute Eye wash: 12 L per minute / 3 US gal per minute
AMBIENT OPERATING TEMPERATURE	MINIMUM 5C / 41F MAXIMUM 55C / 131F
Please see page 57-58 for optional accessories	



SAFETY SHOWERS AND EYEWASH EQUIPMENT

PREMIUM RANGE

Wall Mounted, Pedestal Mounted, Handheld, Bench Mounted Eye/Face Wash in various materials to meet premium standards and conditions	
Item Code	Description
H-STD856	Wall Mounted 316SS Eye/Face wash
H-STD856SP	Pedestal Mounted 316SS Eye/Face wash

Open 316L stainless steel bowl, wall-mounted emergency eye/face wash featuring twin spray nozzles protected by dust covers. When activated via the push plate, the water jets lift off the dust covers. The eye wash diffusers are fitted with fine mesh strainers and individual flow controllers designed to give a gentle flow of aerated water. Unit is available Wall Mounted and Pedestal Mounted.



SPECIFICATIONS	
OPERATING PRESSURE	2.0 to 6 BAR G (29 to 87 PSI)
MINIMUM FLOW AT OPERATING PRESSURE	Shower: 76 litres/minute minimum (20 US Gallons). Eye/face wash: 12 litres/minute minimum (3 US Gallons)
MINIMUM AMBIENT OPERATING TEMPERATURE	5° C (41° F)
MAXIMUM AMBIENT OPERATING TEMPERATURE	35° C (95° F)
Please see page 57-58 for optional accessories	

Emergency Handheld Eye, Face and Body Wash	
Item Code	Description
H-OPTI100	Wall Mounted Single Cup Optiflex
H-OPTI500	Wall Mounted Dual Cup Optiflex
H-OPTI600	Bench Mounted Dual Cup Optiflex

A range of wall or table mounted units, available with one or two nozzles, developed to suit hazardous environments where there is a risk of small spillages of chemicals or dangerous substances. The 1.5m of reinforced hose makes these handheld showers particularly useful for treating disabled personnel. The unique lock-on actuating button for ease of use meets European and international standards. Fitted with dust covers, a non-return valve and a built-in flow regulator.



H-OPTI100



H-OPTI500



NEW MODEL
H-OPTI100



NEW MODEL
H-OPTI500



NEW MODEL
H-OPTI600

EMERGENCY TANK SHOWERS FOR ANY APPLICATION

H-EXPJ14K1500

H-EXPJ14KS1500

Insulated emergency tank shower with eye/face wash unit, for use in hazardous and non-hazardous hot climates. Designed to meet and exceed ANSI standards by providing tepid water for over 15 minutes at a guaranteed flow of 76 litres per minute, even when there is no mains water supply. Available with galvanised mild steel or stainless steel frame.

Selecting the right safety shower for your site can be a complex task. With challenges such as remote locations, extreme temperatures, low water pressure or no reliable water supply, a simple tubular shower isn't always the right fit. From oil rigs to water treatment sites, petrochemical plants to mining facilities, emergency tank showers are the ideal solution.

Self-contained and resilient, emergency tank showers are often the simplest and most comprehensive way to stay compliant. Manufactured at our factory in the UK, the emergency tank showers are built to a proven design and have a long life. We're also proud to have been awarded the ISO 9001:2015 certification, an internationally recognised standard that ensures our services meet the needs of clients through an effective quality management system. EN15154 and ANSI Z358.1-2014 Compliant.

SPECIFICATIONS

GRP PANNELLING TO 3 SIDES	TEMPERATURE INDICATOR 4" DIAL
SUN SHIELDS - SET	IMMERSION HEATER - FLP
SUMP FRAME & FOOT GRATING	IMMERSION HEATER - NON FLP
SHOWER PANEL FOOT CONTROL	CHILLER UNIT - FLP
EYE WASH TREADLE FOOT CONTROL	CHILLER UNIT - NON FLP
EYE/FACE WASH	LIGHT - FLP
POINTER LEVEL INDICATOR	LIGHT - NON FLP



- Ensure continuous water supply delivering 76 litres per minute for 15 minutes. (Section 4.1.2, 4.5.5)
- Deliver tepid water (16°C - 38°C) to prevent thermal shock and ensure casualties can use the shower for the full duration. (Section 4.1.2, 4.5.5)
- Installed so the shower head is between 208-244cm from the floor (Section 4.1.3, 4.5.4)
- Safety showers must be located within 10 seconds/15 metres of a potential hazard. (Section 4.5.2)
- Safety showers must be located on the same level as the hazard and path should be free of obstructions. Any doors that have to be negotiated must not have a lock and must open in the direction of travel towards the shower. (Section 4.5.2)
- The unit should be well lit and identified with a highly visible sign. (Section 4.6.2)
- All units to be activated weekly to flush the line and verify proper operation and ensure flushing fluid is available. (Section 4.6.5)
- All units must be inspected annually to assure conformance to above standard. (Section 4.6.5)
- Stay-open valve (hands free) activates in one second or less. (Section 4.1.5, 4.2)
- Eye wash heads positioned between 84-135cm from the floor. (Section 5.4.4, 6.4.4)
- Combination unit components shall be positioned so that the components may be used simultaneously by the same user (Section 7.4.4)
- All employees who may be subject to exposure to hazardous materials must be trained in the use and also the locations of the unit. (Section 4.6.4)



MOBILE INTERIM 114L SELF-CONTAINED SAFETY SHOWER AND EYE WASH

H-STD40K45G

An essential addition to sites where a stationary safety shower and eye wash is unsuitable, for stand-by use in locations where no water supply is available, or when existing safety showers are undergoing maintenance.

Designed to supplement permanent plumbed-in models, the 114 litre unit is easy to manoeuvre as the location of the hazard changes during a project. This unheated model incorporates a polypropylene lined cylinder, heavy duty powder coated stainless steel frame and large pneumatic tyres to aid mobility.



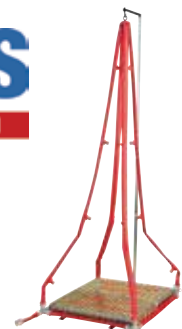
DECONTAMINATION SHOWERS

12 or 16 nozzle portable decontamination shower

Item Code	Description
H-30012E	12 nozzle portable decontamination shower
H-30016E	16 nozzle portable decontamination shower

A 12 or 16 nozzle portable decontamination shower designed to be both lightweight and robust. Ideal for use by Civil and Military Fire Services, Chemical and Petrochemical Industries, Armed Services and Civil Defence Units, the unit can be quickly deployed in cases of major chemical, biological and nuclear incident in less than a minute.

The 11" lay-flat Red Dura-line hoses form four shower legs, each of which is fitted with four spray nozzles. Once erected and coupled to a free appliance, water is admitted to the apparatus and the hoses become rigid under pressure, adopting a curved form to give 360° decontamination. The rugged carrying case duals as an effective base platform, the design of which is a lay-flat host assembly, complete with non-slip raised platform.



ACCESSORIES FOR PREMIUM RANGE OF SAFETY SHOWERS AND EYEWASH EQUIPMENT

PREMIUM RANGE ACCESSORIES

ACCESSORIES AND EYEWASH EQUIPMENT

Item Code	Description
H-TFC-G	G RANGE FOOT TREADLE FOR PREMIUM EYEWASH
H-KTFC	K RANGE FOOT TREADLE FOR SELF-DRAINING EYEWASH



Item Code	Description
H-SD05010	1 INCH 316L/GALV ANSI/ASME/PN 150LB RAISED/FLAT FACE FLANGE AT WATER INLET/OUTLET
H-SD05030	1-1/4 INCH 316L/GALV ANSI/ASME 150LB RAISED/FLAT FACE FLANGE AT WATER INLET/OUTLET
H-SD05040	1-1/2 INCH 316L/GALV ANSI/ASME 150LB RAISED/FLAT FACE FLANGE AT WATER INLET/OUTLET
H-SD05050	2 INCH 316L/GALV ANSI/ASME 150LB RAISED/FLAT FACE FLANGE AT WATER INLET/OUTLET



Other Sizes are available on request

Item Code	Description
H-VL60001	1/2 INCH BSP FEMALE 316 STAINLESS STEEL SCALD PROTECTION VALVE SP68-100 - VALVE FULLY OPEN AT 38 DEG C, FULLY CLOSED AT 32 DEG C
H-VL60013	1/2 INCH BSP FEMALE 316 STAINLESS STEEL SCALD PROTECTION VALVE SP68-95 - VALVE FULLY OPEN AT 35 DEG C, FULLY CLOSED AT 29 DEG C



Other sizes and Temperature parameters available on request

Item Code	Description
H-EC35147	1-1/4 Inch Bsp Euroswitch 316 Stainless Steel With Terminal Box With M20 Cable Entry, Spdt With 1 Nc & 1No Volt-Free Contacts
H-STD22KS - SS316	Low Inrush Proximity Switch, 24VDC, Suitable For Zone Suitable For Non-Flameproof Areas
H-STD22KS(2ND) - SS316	Low Inrush 2nd Proximity Switch, 24VDC Complete With Brackets Suitable For Non-Flameproof Areas
H-STD22KSZ12 - SS316	Low Inrush Proximity Switch, 24VDC, Suitable For Zone 1 & 2 Areas Gas Groups 11a And 11b
H-STD22KS(2ND) Z12 - SS316	Low Inrush 2nd Proximity Switch, 24VDC Complete With Brackets. Suitable For Zone 1 & 2 Areas Gas Groups 11a And 11b
H-STD22K	Brass Nickel Plated Low Inrush Proximity Switch, 24VDC, Suitable For Zone Suitable For Non-Flameproof Areas
H-STD22K(2ND)	Brass Nickel Plated Low Inrush 2nd Proximity Switch, 24VDC Complete With Brackets Suitable For Non-Flameproof Areas
H-STD22KZ12	Brass Nickel Plated Low Inrush Proximity Switch, 24VDC, Suitable For Zone 1 & 2 Areas Gas Groups 11a And 11b
H-STD22K(2ND)Z12	Brass Nickel Plated Low Inrush 2nd Proximity Switch, 24VDC Complete With Brackets Suitable For Zone 1 & 2 Areas Gas Groups 11a And 11b



Other Configurations are available on request

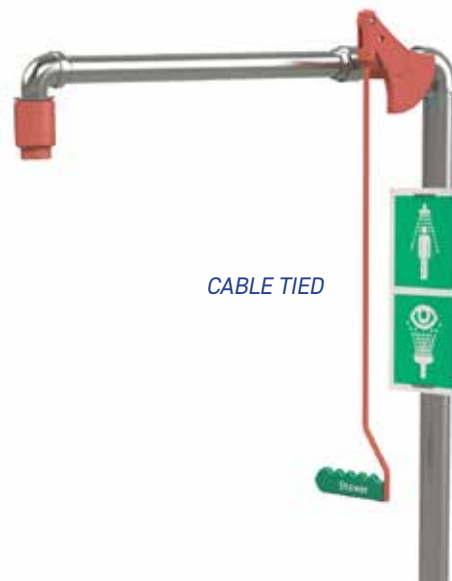
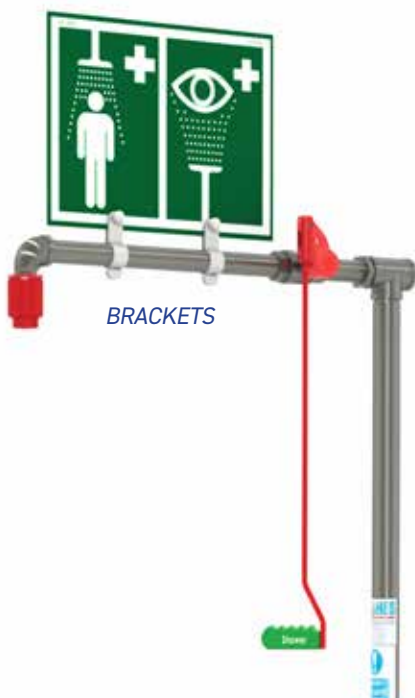
SIGNAGE

Signage for Safety Shower and Eye/Face Wash for all areas required

SPECIFICATIONS	
Item	Details
H-EWS	EYEWASH SIGN METAL 300X255MM SINGLE SIDE WALL MOUNTED
H-SSS	SAFETY SHOWER SIGN METAL 300X255MM DOUBLE SIDED WITH BRACKETS
H-ESS	SAFETY SHOWER/EYEWASH SIGN METAL 300X400MM DOUBLE SIDED BRACKETS
H-EWSP	EYEWASH SIGN POLY 140X140MM SINGLE SIDE WALL MOUNTED OR CABLE TIED
H-SSSP	SAFETY SHOWER SIGN POLY 140X140MM SINGLE SIDE WALL MOUNTED OR CABLE TIED
H-ESSP	SAFETY SHOWER/EYEWASH SIGN POLY 280X140MM SINGLE SIDE WALL MOUNTED OR CABLE TIED

The Poly Signs are Single Sided and are provided for Wall Mounted Or Cable Tied.

PLEASE ADVISE UPON ORDER



SHOWER TEST KIT

To facilitate easy weekly testing of shower equipment, as required by the ANSI Z 358.1-2014 standard, Spill Station recommends the use of a Shower Test Kit.

Water from the shower nozzle is directed into a container via the funnel, allowing maintenance personnel to measure the delivery of water whilst ensuring they and the floors are kept dry.

The Shower Test Kit includes a white 10L bucket to contain the water during testing, also allowing for water flow rates to be calculated by measuring the time taken for the bucket to be filled.

Please contact our team for more information.

SPECIFICATIONS

FUNNEL	600GSM PVC coated Fabric
FUNNEL SUPPORT COLLAR	PVC Pipe
TELESCOPIC HANDLE	PVC pipe
10 LITRE CONTAINER	Plastic bucket Marked at 10L

DIMENSIONS

Item Code		
H-STK	FUNNEL	1980mm long
		360mm diameter upper opening
		180mm diameter lower opening
	10 LITRE CONTAINER	280mm high 260mm diameter



SHOWER MODESTY CURTAIN

Optional Fittings

Offers privacy to a casualty in situations where items of clothing must be removed. The curtain also prevents water and contaminants from splashing the immediate area around the safety shower.

The opaque PU coated nylon curtain is attached to a circular shaped stainless steel rail to ensure the user is completely concealed for maximum privacy.

SPECIFICATIONS

MATERIALS OF CONSTRUCTION

CURTAIN RAIL & MOUNTING BRACKETS	Stainless Steel
CURTAIN	PU nylon

DIMENSIONS

Item Code	DIAMETERxDROP	
H-CR		1.2m (4ft) x 2m (6.5ft)
H-WPCR		



COMBINATION SAFETY SHOWERS AND EYE/FACE WASH

ESSENTIAL RANGE

Item Code	Description
H-D5016	FLOOR MOUNTED GALVANISED POWDER COATED RAL6029 GREEN EMERGENCY SAFETY SHOWER WITH 304 STAINLESS-STEEL EYE/FACE WASH UNIT POLY SIGN AND GRP SPRAY NOZZLE (NO BOWL, DRAIN ASSEMBLY, NO FOOT TREADLE, NO ABS SHROUD)

The Essential Range of Safety Shower and Eye/Face Wash, perfect for environments where freezing or overheating is not a concern. Engineered to deliver ANSI 358.1-2014 standard flow rates, ensuring a robust flow of 76 Liters per minute of potable water from the shower and 12 Liters per minute to the eye/face wash.

SPECIFICATIONS	
OPERATING PRESSURE	2.0 to 6 BAR G (29 to 87 PSI)
MINIMUM FLOW AT OPERATING PRESSURE	Shower: 76 litres/minute minimum (20 US Gallons). Eye/face wash: 12 litres/minute minimum (3 US Gallons)
MINIMUM AMBIENT OPERATING TEMPERATURE	5° C (41° F)
MAXIMUM AMBIENT OPERATING TEMPERATURE	35° C (95° F)

OPTIONAL EXTRA ATTACHMENTS	
Item Code	Description
H-DA002	BOWL AND DRAIN ASSEMBLY FOR GALVANISED COMBINATION SAFETY SHOWER AND EYE/FACE WASH SUITS H-D5016
H-DA003	GRP RED FOOT CONTROL PANEL ASSEMBLY FOR EYE FACE WASH ACTIVATION SUITS H-D5016, H-D5017 & H-D5020
H-DA004	ADDITIONAL ROSE / ABS SHROUD COVER FOR DRENCH SHOWER SUITS H-D5016 & H-D5017 - GRP SPRAY NOZZLE REMAINS



Shown with optional eye/face wash bowl (Part No. H-DA002)
Foot treadle (Part no. H-DA003)

Shown with optional eye/face wash bowl (Part No. H-DA002)
Foot treadle (Part no. H-DA003) ABS Shroud Cover over spray
Nozzle (Part no. H-DA004)

COMBINATION SAFETY SHOWERS AND EYE/FACE WASH

ECONOMY RANGE

Item Code	Description
H-D5017	FLOOR MOUNTED 304 STAINLESS STEEL EMERGENCY SAFETY SHOWER WITH 304 STAINLESS-STEEL EYE/FACE WASH UNIT WITH POLY SIGN AND GRP SPRAY NOZZLE (NO BOWL, DRAIN ASSEMBLY, NO FOOT TREADLE, NO ABS SHROUD)

The Economy Range of Safety Shower and Eye/Face Wash, perfect for environments where freezing or overheating is not a concern. Engineered to deliver ANSI 358.1-2014 standard flow rates, ensuring a robust flow of 76 Liters per minute of potable water from the shower and 12 Liters per minute to the eye/face wash.

SPECIFICATIONS

OPERATING PRESSURE	2.0 to 6 BAR G (29 to 87 PSI)
MINIMUM FLOW AT OPERATING PRESSURE	Shower: 76 litres/minute minimum (20 US Gallons). Eye/face wash: 12 litres/minute minimum (3 US Gallons)
MINIMUM AMBIENT OPERATING TEMPERATURE	5° C (41° F)
MAXIMUM AMBIENT OPERATING TEMPERATURE	35° C (95° F)

OPTIONAL EXTRA ATTACHMENTS

H-DA001	BOWL AND DRAIN ASSEMBLY FOR SS COMBINATION SAFETY SHOWER AND EYE/FACE WASH SUITS H-D5017
H-DA003	GRP RED FOOT CONTROL PANEL ASSEMBLY FOR EYE/FACE WASH ACTIVATION SUITS H-D5016, H-D5017 & H-D5020
H-DA004	ADDITIONAL ROSE / ABS SHROUD COVER FOR DRENCH SHOWER SUITS H-D5016 & H-D5017 - GRP SPRAY NOZZLE REMAINS



Shown with optional eye/face wash bowl (Part No. H-DA001)Foot treadle (Part no. H-DA003)

Shown with optional eye/face wash bowl (Part No. H-DA001) Foot treadle (Part no. H-DA003) ABS Shroud Cover over spray Nozzle (Part no. H-DA004)

WALL MOUNTED/PEDESTAL MOUNTED STAINLESS STEEL 304 EYE/FACE WASH

ECONOMY RANGE

Item Code	Description
H-D5020	OPEN BOWL WALL MOUNTED 304 STAINLESS STEEL EYE/FACE WASH WITH POLY SIGN

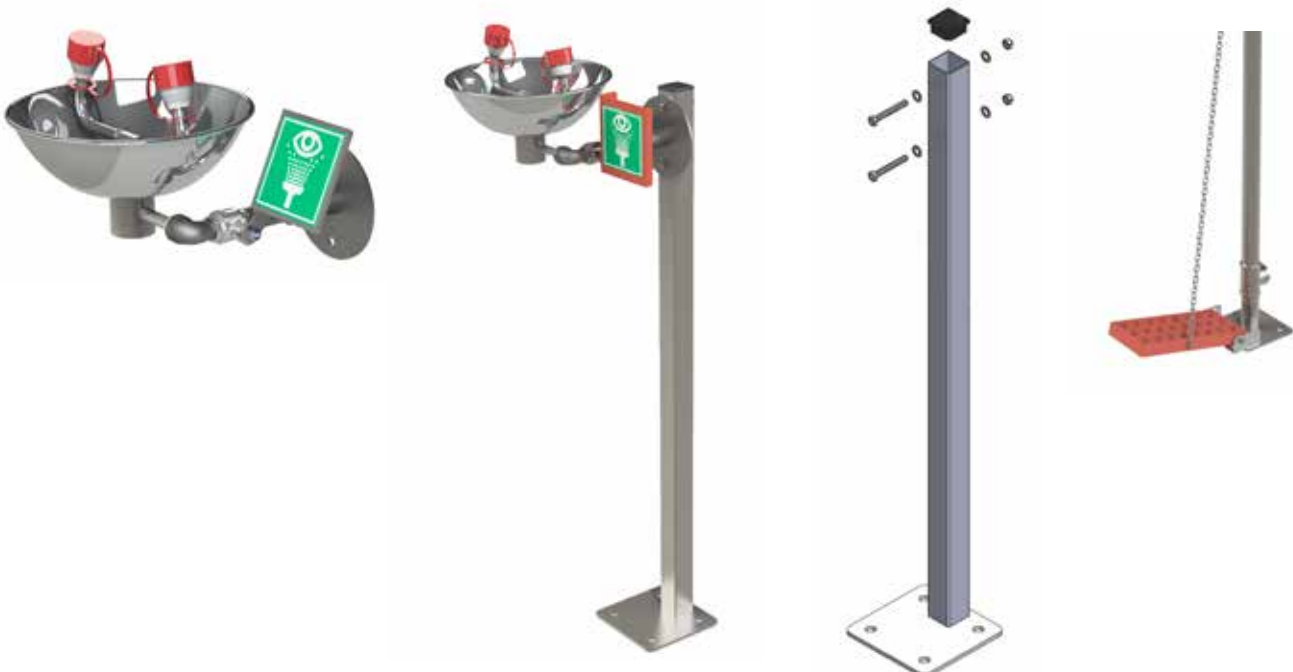
The Economy Range of Eye/Face Wash in 304 stainless-steel is wall-mounted with an open bowl. This eye/face wash with twin spray nozzles safeguarded by dust covers. Activated effortlessly via the push plate, these covers lift off to reveal the powerful yet gentle spray. With an inbuilt flow regulator valve ensuring optimal safety to the eyes, water flow, you can trust in its reliability during emergencies. The eye wash diffusers, equipped with fine mesh strainers, deliver a gentle aerated flow of water at 12 Liters per minute, meeting ANSI 358.1-2014 standard. While primarily intended for indoor use, this unit is versatile enough for outdoor placement in areas free from overheating risks.

SPECIFICATIONS

OPERATING PRESSURE	2.0 to 6 BAR G (29 to 87 PSI)
MINIMUM FLOW AT OPERATING PRESSURE	Shower: 76 litres/minute minimum (20 US Gallons). Eye/face wash: 12 litres/minute minimum (3 US Gallons)
MINIMUM AMBIENT OPERATING TEMPERATURE	5° C (41° F)
MAXIMUM AMBIENT OPERATING TEMPERATURE	35° C (95° F)

PEDESTAL MOUNTING OPTIONS AVAILABLE

Item Code	Description
H-D5020CP	OPEN BOWL WALL MOUNTED 304 STAINLESS STEEL EYE/FACE WASH COMPLETE WITH PP SIGN AND SS 304 PEDESTAL
H-D5020CPG	OPEN BOWL WALL MOUNTED 304 STAINLESS STEEL EYE/FACE WASH COMPLETE WITH PP SIGN AND GRP PEDESTAL
H-DA003	GRP RED FOOT CONTROL PANEL ASSEMBLY FOR EYE/FACE WASH ACTIVATION SUITS H-D5016, H-D5017 & H-D5020



SELF-CONTAINED GRAVITY FED EYEWASH

FEATURES

- A wall or bench mounted, self-contained eye wash unit providing 15 minutes of water flow (Exceeds 15mins for H-P401)
- Emergency First-Aid water treatment for work sites without plumbing capabilities
- Large filling cap makes for easy filling, cleaning and inspection whilst the retractable tray protects against airborne contaminants
- High visibility colour provides quicker identification for a casualty in distress
- Meets ANSI and EN standards
- Test weekly for compliance of ANSI Z 358.1-2014 – Water Preservative Concentrate – Refer Page 64

MATERIALS OF CONSTRUCTION

MAIN BODY AND PULL DOWN	High density polyethylene
WALL BRACKET	Galvanised mild steel
NOZZLES	Polypropylene
STANDARD FINISH	H-P400 - Green and Orange H-P401 - Yellow and Green
WATER CAPACITY	H-P400 - 34 litres H-P401 - 81 litres
MINIMUM FLOW	1.5 litres/minute minimum (0.4 US Gallons) (H-P401 Exceeds)
MINIMUM AMBIENT OPERATING TEMPERATURE	5° C (41° F)
MAXIMUM AMBIENT OPERATING TEMPERATURE	35° C (95° F)
EYE/FACE WASH OPERATION	Pull Down Tray for Activation
DIMENSIONS (WxDxH)	H-P400 - 580mm x 250mm x 400mm Packed H-P401 - 610mm x 610mm x 660mm Packed
WEIGHT (NO OPTIONS)	H-P400 - 4kg Net / 5kg Packed H-P401 - 8.2kg Net / 10kg Packed

SELF-CONTAINED EYEWASH

Item Code	Description
H-P400	Portable Gravity Fed Eyewash 34L – Wall Mount Only
H-P401	Portable Gravity Fed Eyewash 81L – Wall / Bench Mount
H-P400TJ	Thermal Protection Jacket for H-P400 (34L)



ANTBAC

WATER PRESERVATIVE CONCENTRATE

ANTBAC – Water Preservative Concentrate

One 250ml bottle of ANTBAC Water Preservative Concentrate is designed to maintain from 30-100 litres of potable water for up to three months. Cartons of four bottles provide a 1-year supply and offer a 36-month shelf life when stored below 30°C.

The ANTBAC is specifically designed to be used with Spill Station's range of Self-Contained Eyewash Stations or products with a capacity of 30-100 litres of water. The water used to fill the self-contained products must be potable before adding the solution.

If you require a larger amount of water to be preserved, please do contact us with your requirements.

WATER PRESERVATIVE CONCENTRATE		
Item Code	Description	Packed Dimensions
H-ANTBAC100	WATER PRESERVATIVE CONCENTRATE TO MAINTAIN 30-100L OF POTABLE WATER 250ML	110MM (H) X 60MM (D) WEIGHT 0.26KG BOTTLE
H-ANTBAC100/4	WATER PRESERVATIVE CONCENTRATE TO MAINTAIN 30-100L OF POTABLE WATER - BOX OF 4 / 250ML	135MM (L) X 135MM (W) X 135MM (H) WEIGHT 1.2KG PACKED IN CARTON BOX



TOBIN EYEWASH SYSTEM

INDUSTRIAL EYEWASH SOLUTION STATION

An eyewash should be quick, simple and safe to use. The unique shape of Tobin's eyewash bottle insures that even a temporarily blinded and confused person can identify it as a safe eyewash.

TOBIN'S EYEWASH SYSTEMS are a well proven, quick and safe way to wash chemicals from the eyes. This specially designed system gives the fastest possible application combined with a volume large enough for most eye accidents.

TOBIN SALINE SOLUTION

ITEM CODE	PRODUCT NAME	CAPACITY	WEIGHT	DIMENSIONS
TOB121	POCKET EYEWASH FLASK 200ML, SALINE SOLUTION	1 X 200ML	0.24 kg	35 X 85 X 180mm
TOB124	STATIONARY STAND WALL MOUNT INCLUDING 5 x 1000ML BOTTLES, SALINE EYEWASH SOLUTION	5 X 1000ML	7.0 kg	456 x 375 x 115mm
TOB127	TRANSPORT STAND WALL AND BENCH MOUNT INCLUDING 2 X 1000ML BOTTLES WITH SALINE EYEWASH SOLUTION	2 X 1000ML	2.8 kg	210 X 375 X 115mm
TOB129	STATIONARY STAND WALL MOUNT INCLUDING 2 x 1000ML BOTTLES, SALINE EYEWASH SOLUTION	2 X 1000ML	2.8 kg	210 X 375 X 115mm
TOB130	DUST PROTECTED CABINET WALL MOUNT INCLUDING 2 X 1000ML BOTTLES WITH SALINE EYEWASH SOLUTION	2 X 1000ML	3.5 kg	260 X 385 X 115mm
TOB126	REPLACEMENT 2 X 1000ML BOTTLES WITH SALINE EYEWASH SOLUTION	2 X 1000ML	2.4 kg	210 X 375 X 115mm
TOB128	REPLACEMENT 5 X 1000ML BOTTLES WITH SALINE EYEWASH SOLUTION	5 X 1000ML	6.0 kg	456 x 375 x 115mm

SALINE



TOB121



TOB124



TOB127



TOB129



TOB130



TOB126



TOB128

TOBIN EYEWASH SYSTEM

INDUSTRIAL EYEWASH SOLUTION STATION

TOBIN BORATE BUFFERED SOLUTION FOR STRONG BUFFERING EFFECT AGAINST ALKALINE SOLUTIONS

ITEM CODE	PRODUCT NAME	CAPACITY	WEIGHT	DIMENSIONS
TOB425	TRANSPORT STAND WALL AND BENCH MOUNT INCLUDING 2 X 1000ML BOTTLES WITH BORATE BUFFERED EYEWASH SOLUTION	2 X 1000ML	2.8 kg	210 X 375 X 115mm
TOB429	STATIONARY STAND WALL MOUNT INCLUDING 2 x 1000ML BOTTLES WITH BORATE BUFFERED EYEWASH SOLUTION	2 X 1000ML	2.8 kg	210 X 375 X 115mm
TOB431	DUST PROTECTED CABINET WALL MOUNT INCLUDING 2 X 1000ML BOTTLES WITH BORATE BUFFERED EYEWASH SOLUTION	2 X 1000ML	3.5 kg	260 X 385 X 115mm
TOB426	REPLACEMENT 2 X 1000ML BOTTLES WITH BORATE BUFFERED EYEWASH SOLUTION	2 X 1000ML	2.4 kg	210 X 375 X 115mm

BORATE



TOB425



TOB429



TOB431



TOB426

Instructions for use



WITHIN ARMS REACH: Chemicals in the eye cause serious damage within 1-5 seconds (see page 7). Washing that begins within a few seconds can be decisive in minimizing eye damage. A temporarily blinded person trying to reach an eyewash a few meters away requires presence of mind, a good sense of direction and an obstacle free passage. An eyewash should be within arms reach.

CONTROLLED FLOW: According to Prof. Tengroth at the Eye Clinic at St. Eriks Hospital in Stockholm it is important that damaged eyes are washed by a soft flow. Tobin's bottle is constructed to empty under natural pressure giving a soft flow. When the bottom airvent is opened a patient cannot increase the flow by squeezing the bottle. A bottle gives approx. 3 minutes washing time.

SHELF LIFE: As the bottles are disposable, costly refill routines are unnecessary. The contents of the bottle have a 3 year shelf life. Each bottle has an expiry date clearly visible.

VOLUME: Uninterrupted washing over a long period is particularly important. The 5 bottle stand gives approx. 15 minutes washing. Further bottles can be taken from other stands if required.

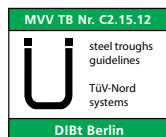
TRANSPORT: Bottles can easily be removed from the stand and taken along during transportation to a doctor. It is very easy to open the bottles by hand. It is possible to control the flow by placing the thumb over the bottom hole.

DUST COVERS: A simple plastic bag accompanies each bottle. It keeps the bottles clean in dusty/dirty environments..

LOW PRICE: The cost of a wallstand with 5 bottles is low, making it possible to give each danger spot its own eyewash station.

STERILITY: The regulations governing sterile liquids are rigorous. The bottle cannot contain any bacteria during its shelf life. When a bottle is opened the contents must be used within few hours or thrown away. The manufacturing of all Tobin eyewash liquids complies with the European and Swedish regulations in the standards ISO 13485:2016, SS-EN ISO 17665-1:2006, ISO 14971:2020 and SS-EN 556. They also comply with the SS-EN 15154-4:2009 standard.

EASY TO OPEN: The bottles are easy to open as is illustrated on each individual bottle and on most stands.



30 MINUTE FIRE RATED HAZARDOUS STORAGE CABINET

SL-B802640A



Store LAB (Type 30) with Fire Resistance >30 minutes Flammable/Corrosive/Acid/Toxic/Pesticide Cabinet, 4 Gallon, 15 Litre, Self Closing, 1 Door, 1 Shelf, Grey Body RAL7035, Daffodil Yellow Door RAL1007, Levering Feet, Auto Thermal Closing Mechanism, Height-adjustable shelves at intervals of 32 mm, Levering Feet for levelling, With Base Sump Tray and Perforated Cover Plate at Base, Cylinder Lock on Door, Door Hinge to Right. Markings according to DIN EN 14470-1 / TRGS 510 / ISO 3864 / ASR A1.3.

Specifications: 4G / 15L - Packed Dimensions (HxWxD) 800 x 1200 x 800mm

SPECIFICATIONS		
Item Code	External Dimensions	Weight kg
SL-B802640A	600mm(H) x 600mm(W) x 570mm(D)	63 kg
	Internal Dimensions	Packing Weight kg
	425mm(H) x 472mm(W)x 470mm(D)	80 kg

SL-B802609A



Store LAB (Type 30) with Fire Resistance >30 minutes Flammable/Corrosive/Acid/Toxic/Pesticide Cabinet, 12 Gallon, 45 Litre, Self Closing, 2 Doors, 1 Shelf, Grey Body RAL7035, Daffodil Yellow Door RAL1007, Levering Feet, Auto Thermal Closing Mechanism, Height-adjustable shelves at intervals of 32 mm, Levering Feet for levelling, With Base Sump Tray and Perforated Cover Plate at Base, Cylinder Lock on Doors, Door Hinge to Right. Markings according to DIN EN 14470-1 / TRGS 510 / ISO 3864 / ASR A1.3

Specifications: 12G / 45L - Packed Dimensions (HxWxD) 800 x 1200 x 800 mm

SPECIFICATIONS		
Item Code	External Dimensions	Weight kg
SL-B802609A	600mm(H) x 1100mm(W) x 570mm(D)	110 kg
	Internal Dimensions	Packing Weight kg
	425mm(H) x 986mm(W)x 455mm(D)	125 kg

SL-B802608A

Store LAB (Type 30) with Fire Resistance >30 minutes Flammable/Corrosive/Acid/ Toxic/Pesticide Cabinet, 15 Gallon, 57 Litre, Self Closing, 1 Door, 2 Shelves, Grey Body RAL7035, Daffodil Yellow Door RAL1007, Levering Feet, Auto Thermal Closing Mechanism, Height-adjustable shelves at intervals of 32 mm, Levering Feet for levelling, With Base Sump Tray and Perforated Cover Plate at Base, Cylinder Lock on Door, Door Hinge to Right. Markings according to DIN EN 14470-1 / TRGS 510 / ISO 3864 / ASR A1.3.

Specifications: 15G / 57L - Packed Dimensions (HxWxD) 1500 x 1200 x 800 mm

SPECIFICATIONS

Item Code	External Dimensions	Weight kg
SL-B802608A	1315mm(H) x 595mm(W) x 595mm(D)	122 kg
	Internal Dimensions	Packing Weight kg
	1108mm(H) x 475mm(W)x 515mm(D)	140 kg

SL-B802603A

Store LAB (Type 30) with Fire Resistance >30 minutes Flammable/Corrosive/Acid/ Toxic/Pesticide Cabinet, 27 Gallon, 103 Litre, Self Closing, 1 Door, 3 Shelves, Grey Body RAL7035, Daffodil Yellow Door RAL1007, Levering Feet, Auto Thermal Closing Mechanism, Height-adjustable shelves at intervals of 32 mm, Levering Feet for levelling, With Base Sump Tray and Perforated Cover Plate at Base, Cylinder Lock on Door, Door Hinge to Right. Markings according to DIN EN 14470-1 / TRGS 510 / ISO 3864 / ASR A1.3.

Specifications: 27G / 103L - Packed Dimensions (HxWxD) 2200 x 1200 x 800 mm

SPECIFICATIONS

Item Code	External Dimensions	Weight kg
SL-B802603A	1935mm(H) x 595mm(W) x 595mm(D)	147 kg
	Internal Dimensions	Packing Weight kg
	1600mm(H) x 475mm(W)x 515mm(D)	165 kg

SL-B802604A

Store LAB (Type 30) with Fire Resistance >30 minutes Flammable/Corrosive/Acid/ Toxic/Pesticide Cabinet, 60 Gallon, 227 Litre, Self Closing, 2 Door, 3 Shelves, Grey Body RAL7035, Daffodil Yellow Door RAL1007, Levering Feet, Auto Thermal Closing Mechanism, Height-adjustable shelves at intervals of 32 mm, Levering Feet for levelling, With Base Sump Tray and Perforated Cover Plate at Base, Cylinder Lock on Doors, Door Hinge to Right. Markings according to DIN EN 14470-1 / TRGS 510 / ISO 3864 / ASR A1.3.

Specifications: 60G / 227L - Packed Dimensions (HxWxD) 2200 x 1200 x 800 mm

SPECIFICATIONS

Item Code	External Dimensions	Weight kg
SL-B802604A	1935mm(H) x 1195mm(W) x 595mm(D)	225 kg
	Internal Dimensions	Packing Weight kg
	1600mm(H) x 1075mm(W)x 515mm(D)	240 kg



Justrite is the leading source of storage, handling and security products including fire prevention safety equipment for hazardous materials, environmental protection and specialized storage products.

Since 1906 customers have looked to Justrite for innovative solutions to help protect workers, reduce fire risks, and improve productivity. Tested for unsurpassed quality and compliance to applicable codes and regulations.



Justrite safety cabinets, safety cans and storage products are available from Spill Station Asia Pte Ltd.



Item Code	Description
J-890400	Justrite 890400 Flammable Safety Cabinet 4 Gallons (15L) Yellow Manual Closing 1 Door 1 Shelf External Dimension: 22" H x 17" W x 17" D559mm H x 432mm W x 432mm D Internal Dimension: 18.5" H x 13.8" W x 13.8" D470mm H x 349mm W x 349mm D Net Weight: 24.6kg



Item Code	Description
J-890402	Justrite 890402 Corrosive Safety Cabinet 4 Gallons (15L) Blue Manual Closing 1 Door 1 Shelf External Dimension: 22" H x 17" W x 17" D559mm H x 432mm W x 432mm D Internal Dimension: 18.5" H x 13.8" W x 13.8" D470mm H x 349mm W x 349mm D Net Weight: 27.7kg



Item Code	Description
J-891200	Justrite 891200 Flammable Safety Cabinet 12 Gallons (45L) Yellow Manual Closing 1 door, 1 shelf External Dimension: 35" H x 23.25" W x 18" D D 889mm H x 591mm W x 457mm D Internal Dimension: D30.5" H x 20" W x 14.6" D775mm H x 508mm W x 370mm D Net Weight: 46.7kg



Item Code	Description
J-891202	Justrite 891202 Corrosive Safety Cabinet 12 Gallons (45L) Blue Manual Closing 1 door, 1 shelf External Dimension: 35" H x 23.25" W x 18" D 889mm H x 591mm W x 457mm D Internal Dimension: 30.5" H x 20" W x 14.6" D 775mm H x 508mm W x 370mm D Net Weight: 46.7kg



Item Code	Description
J-891300 (PIGGYBACK)	Justrite 891300 Flammable Safety Cabinet 12 Gallons (45L) Yellow Manual Closing 2 door, 1 shelf External Dimension: 18" H x 43" W x 18" D 457mm H x 1092mm W x 457mm D Internal Dimension: 13" H x 39.5" W x 14.6" D 330mm H x 1003mm W x 370mm D Net Weight: 45kg



Item Code	Description
J-891302 (PIGGYBACK)	Justrite 891302 Corrosive Safety Cabinet 12 Gallons (45L) Blue Manual Closing 2 doors, 1 shelf External Dimension: 18" H x 43" W x 18" D 457mm H x 1092mm W x 457mm D Internal Dimension: 13" H x 39.5" W x 14.6" D 330mm H x 1003mm W x 370mm D Net Weight: 46.7kg



Item Code	Description
J-891500	Justrite 891500 Corrosive Safety Cabinet 15 Gallons (57L) Blue Manual Closing 1 door, 1 shelf External Dimension: 44" H x 23.25" W x 18" D 1118mm H x 591mm W x 457mm D Internal Dimension: 39.6" H x 20" W x 14.6" D 1006mm H x 508mm W x 370mm D Net Weight: 52.6kg



Item Code	Description
J-891502	Justrite 891502 Corrosive Safety Cabinet 15 Gallons (57L) Blue Manual Closing 1 door, 1 shelf External Dimension: 44" H x 23.25" W x 18" D 1118mm H x 591mm W x 457mm D Internal Dimension: 39.6" H x 20" W x 14.6" D 1006mm H x 508mm W x 370mm D Net Weight: 54.7kg



Item Code	Description
J-891700 (PIGGYBACK)	Justrite 891700 Flammable Safety Cabinet 17 Gallons (64L) Yellow Manual Closing 2 doors, 1 shelves External Dimension: 24" H x 43" W x 18" D 610mm H x 1092mm W x 457mm D Internal Dimension: 19.5" H x 39.5" W x 14.6" D 495mm H x 1003mm W x 370mm D Net Weight: 56.1kg



Item Code	Description
J-891702 (WALL MOUNT)	Justrite 891702 Corrosive Safety Cabinet 17 Gallons (64L) Blue Manual Closing 2 door, 1 shelf External Dimension: 24" H x 43" W x 18" D 610mm H x 1092mm W x 457mm D Internal Dimension: 19.5" H x 39.5" W x 14.6" D 495mm H x 1003mm W x 370mm D Net Weight: 57.8kg



Item Code	Description
J-892200 <i>(SLIMLINE)</i>	Justrite 892200 Flammable Safety Cabinet 22 Gallons (83L) Yellow Manual Closing 1 door, 3 shelves External Dimension: 65" H x 23.25" W x 18" D 1651mm H x 591mm W x 457mm D Internal Dimension: 60.5" H x 20" W x 14.6" D 1537mm H x 508mm W x 370mm D Net Weight: 79.8kg

Item Code	Description
J-892202 <i>(SLIMLINE)</i>	Justrite 892202 Corrosive Safety Cabinet 22 Gallons (83L) Blue Manual Closing 1 door, 3 shelves External Dimension: 65" H x 23.25" W x 18" D 1651mm H x 591mm W x 457mm D Internal Dimension: 60.5" H x 20" W x 14.6" D 1537mm H x 508mm W x 370mm D Net Weight: 81.6kg

Item Code	Description
J-892300 <i>(UNDERCOUNTER)</i>	Justrite 892300 Flammable Safety Cabinet 22 Gallons (83L) Yellow Manual Closing 2 doors, 1 shelf External Dimension: 35" H x 35" W x 22" D 889mm H x 889mm W x 559mm D Internal Dimension: 27.4" H x 31.8" W x 18.8" D 695mm H x 806mm W x 476mm D Net Weight: 73.9kg

Item Code	Description
J-892302 <i>(UNDERCOUNTER)</i>	Justrite 892302 Corrosive Safety Cabinet 22 Gallons (83L) Blue Manual Closing 2 doors, 1 shelf External Dimension: 35" H x 35" W x 22" D 889mm H x 889mm W x 559mm D Internal Dimension: 27.4" H x 31.8" W x 18.8" D 695mm H x 806mm W x 476mm D Net Weight: 69.9kg

Item Code	Description
J-893000	Justrite 893000 Flammable Safety Cabinet 30 Gallons (114L) Yellow Manual Closing 2 doors, 1 shelf External Dimension: 44" H x 43" W x 18" D 1118mm H x 1092mm W x 457mm D Internal Dimension: 39.6" H x 39.5" W x 14.6" D 1006mm H x 1003mm W x 370mm D Net Weight: 87.4kg

Item Code	Description
J-893002	Justrite 893002 Corrosive Safety Cabinet 30 Gallons (114L) Blue Manual Closing 2 doors, 1 shelf External Dimension: 44" H x 43" W x 18" D 1118mm H x 1092mm W x 457mm D Internal Dimension: 39.6" H x 39.5" W x 14.4" D 1006mm H x 1003mm W x 370mm D Net Weight: 89.1kg



Item Code	Description
J-894500	Justrite 894500 Flammable Safety Cabinet 45 Gallons (170L) Yellow Manual Closing 2 doors, 2 shelves External Dimension: 65" H x 43" W x 18" D 1651mm H x 1092mm W x 457mm Internal Dimension: 60.5" H x 39.5" W x 14.6" D 1537mm H x 1003mm W x 370mm D Net Weight: 120.1kg



Item Code	Description
J-894502	Justrite 894502 Corrosive Safety Cabinet 45 Gallons (170L) Blue Manual Closing 2 doors, 2 shelves External Dimension: 65" H x 43" W x 18" D 1651mm H x 1092mm W x 457mm D Internal Dimension: 60.5" H x 39.5" W x 14.6" D 1537mm H x 1003mm W x 370mm D Net Weight: 121.8kg



Item Code	Description
J-896000	Justrite 896000 Flammable Safety Cabinet 60 Gallons (227L) Yellow Manual Closing 2 doors, 2 shelves External Dimension: 65" H x 34" W x 34" D 1651mm H x 864mm W x 864mm D Internal Dimension: 60.5" H x 30.8" W x 30.3" D 1537mm H x 781mm W x 771mm D Net Weight: 149.4kg



Item Code	Description
J-896002	Justrite 896002 Corrosive Safety Cabinet 60 Gallons (227L) Blue Manual Closing 2 doors, 2 shelves External Dimension: 65" H x 34" W x 34" D 1651mm H x 864mm W x 864mm D Internal Dimension: 60.5" H x 30.8" W x 30.3" D 1537mm H x 781mm W x 771mm D Net Weight: 151.1kg



Item Code	Description
J-896260	Justrite 896260 Flammable Safety Cabinet 55 Gallons (200L) Yellow Manual Closing 2 doors, 1 shelves External Dimension: 65" H x 34" W x 34" D 1651mm H x 864mm W x 864mm D Internal Dimension: 60.5" H x 30.8" W x 30.3" D 1537mm H x 781mm W x 771mm D Net Weight: 156.9kg



Item Code	Description
J-899000	Justrite 899000 Flammable Safety Cabinet 90 Gallons (341L) Yellow Manual Closing 2 doors, 2 shelves External Dimension: 65" H x 43" W x 34" D 1651mm H x 1092mm W x 864mm D Internal Dimension: 60.5" H x 39.5" W x 30.3" D 1537mm H x 1003mm W x 771mm D Net Weight: 172kg



Item Code	Description
J-899002	Justrite 899002 Corrosive Safety Cabinet 90 Gallons (341L) Blue Manual Closing 2 doors, 2 shelves External Dimension: 65" H x 43" W x 34" D 1651mm H x 1092mm W x 864mm D Internal Dimension: 60.5" H x 39.5" W x 30.3" D 1537mm H x 1003mm W x 771mm D Net Weight: 177.8kg



Item Code	Description
J-S23303	Justrite S23303 Document Storage Box for SDS sheets, Medium-sized, Polyethylene, Lockable Flip-top Opening, Single pack External Dimension: 12.5" H x 10.25" W x 2.25" D 318mm H x 260mm W x 57mm D Internal Dimension: 11.5" H x 8.8" W x 1.6" D 292mm H x 222mm W x 41mm D Net Weight: 0.9kg Other sizes and types available on request



Item Code	Description
J-24080 (1 X 4L BOTTLE)	Justrite 24080 Counter Top Polyethylene Corrosive/Acid Safety Cabinet Royal Blue Manual 1 door External Dimension: 19.75" H x 14.25" W x 17.125" D 502mm H x 362mm W x 435mm D Internal Dimension: 14.5" H x 11" W x 13" D 368mm H x 279mm W x 330mm D Net Weight: 8.8kg



Item Code	Description
J-24180 (2 X 4L BOTTLES)	Justrite 24180 Polyethylene Corrosive/Acid Safety Cabinet (90L) Royal Blue Manual 2 doors, 1 shelf External Dimension: 35" H x 36" W x 25" D 889mm H x 914mm W x 635mm D Internal Dimension: 28" H x 31.3" W x 18" D 711mm H x 794mm W x 457mm D Net Weight: 39kg Litre Capacity: 90 Litres Sump Capacity: 8.5 Gallons



Type 1 Safety Cans

Self-Closing, leakproof lid provides safety from spills.

Designed with a single spout for filling & pouring, the sealed lid features automatic positive-pressure relief that vents between 3 and 5 psig (0.2 & 0.35 bar) to guard against rupture or explosion.

Made from high-grade coated steel, each can is tested to guarantee 100% leakproof construction. The tough powder-coat finish resists chemicals & stands up to demands of rigorous use. Each JUSTRITE safety can is equipped with a stainless steel flame arrester which dissipates heat to stop flashback ignition. Cans up to 1 quart (1L) feature a trigger release handle, while larger capacities have a swinging handle to greatly ease carrying of heavier loads. Large label ID zone and swing-handle cans provides writing space to identify contents, department location, or individual user name.

Certified by FM, UL/ULC & TUV, Justrite safety cans also meet OSHA and NFPA requirements and come with a 10 year warranty.

Type 1 Safety Can funnel

Used to pour into smaller openings, the polypropylene funnel attaches to the spout neck of Type 1 safety cans sized 1 gallon (4 L) & larger. The two-position funnel folds down for when you fill or store the can, & stays up for when you pour. Large rounded bowl provides protection from spillage from splashing & spillage. Durable construction holds up to heavy use.

TRIGGER HANDLE TYPE 1 SAFETY CANS

Description & Capacity	Dimensions (OD x H)	Appd/LSTG Reg	Red Can Mod. No.	Yellow Can Mod No.	Ship WT lb/kg
1 pint (0.5 L) Steel	4.813 x 6.75 IN / 171 x 122mm	FM, UL/ULC/TUV	J-10001	J-10011	2/1
1 quart (1 L) Steel	4.813 x 8.25 IN / 122 x 210mm	FM, UL/ULC/TUV	J-10101	J-10111	2/1
1 gallon (4 L) Steel	7.25 x 11.5 IN / 184 x 292mm	FM, UL/ULC	J-10301	-	4/2

SWINGING HANDLE TYPE 1 SAFETY CANS

Description & Capacity	Dimensions (OD x H)	Appd/LSTG Reg	Red Can Mod. No.	Yel Can Mod No.	Ship WT lb/kg
1 gallon (4 L) steel	9.5 x 11 IN / 241 x 279mm	FM, UL/ULC/TUV	J-7110100	J-7110200	4/2
2 gallon (7.5 L) steel	9.5 x 13.75 IN / 241 x 349mm	FM, UL/ULC/TUV	J-7120100	J-7120200	6/3
2.5 gallon (9.5 L) steel	11.75 x 11.5 IN / 298 x 292mm	FM, UL/ULC/TUV	J-7125100	J-7125200	6/3
5 gallon (19 L) steel	11.75 x 16.875 IN / 298 x 429mm	FM, UL/ULC/TUV	J-7150100	J-7150200	8/4
Polypropylene Funnel	0.5 x 11.25 IN / 13 x 286mm	-	-	J-11202Y	2/1
Rept Flame arrester for 1 Pint (0.5 L) & 1 Quart (1 L) only	-	-	J-11098	J-11098	2/1
Rept Flame Arrester for 1 gallon (4 L) & above	-	-	J-11007	J-11007	2/1





Type II Accuflow Safety Cans

Vented design provides smooth, plug-free liquid flow

Go beyond protection & compliance with the added convenience of AccuFlow with safe-squeeze trigger for safe & controlled pouring.

Justrite patented manifold and proportional flow-control Safe-squeeze trigger provides you the means to regulate the flow rate when handling flammable liquids. Fill port with ergonomic lift lever makes filling easy. Flexible 9-in (229-mm) long metal hose spout helps control the pour into small openings.

Made from high-grade coated steel. Each can is pressured tested to ensure quality. The tough powder-coated finish resists chemicals & stands up to demands of rigorous use. Stainless steel flame arrester – equipped in all Justrite safety cans – Pressure relief that vents between 3 & 5 PSIG (0.2 and 0.35 bar) to protect against explosion. Large label ID zone provides writing space to identify contents, department location, or individual user name. All can sizes have extra capacity for adding two-cycle engine oil or other additives.

Certified by FM, UL/ULC & TUV, Justrite safety cans also meet OSHA & NFPA Requirements & come with a 10-year warranty.

Easy to fill!

Ergonomic lift lever opens the self-closing spout wide for easy filling. A full-length stainless steel flame arrester dissipates heat & allows deeper, secure insertion of the nozzle when filling.

TYPE II ACCUFLOW						
Description & Capacity	Hose Dims (OD x L)	Can Dims (OD x H)	Appd/LSTG Reg	Red Can Mod. No.	Yellow Can Mod No.	Ship WT lb/kg
1 gallon (4 L) steel with hose	0.625 x 9 IN / 16 x 229mm	9.5 x 10.5 IN / 241 x 267mm	FM, UL/ULC/TUV	J-7210120	J-7210220	7/3
2 gallon (7.5 L) steel with hose	0.625 x 9 IN / 16 x 229mm	9.5 x 13.25 IN / 241 x 337mm	FM, UL/ULC/TUV	J-7220120	J-7220220	9/4
2.5 gallon (9.5 L) steel with hose	1 x 9 IN / 25 x 229mm	11.75 x 12 IN / 298 x 305mm	FM, UL/ULC/TUV	J-7225130	J-7225230	9/4
5 gallon (19 L) steel with hose	1 x 9 IN / 25 x 229mm	11.75 x 17.5 IN / 298 x 445mm	FM, UL/ULC/TUV	J-7250130	J-7250230	11/5
Replacement flame arrester, stainless steel, for 1 gallon (4 L) & above	-	-	-	J-11007	J-11007	2/1





Liquid Disposal Safety Cans

A better solution for the containment of liquid flammable or corrosive waste

High density polyethylene (HDPE) disposal cans provide superior chemical resistance & leak protection. Spring-loaded sealed cap, normally closed, automatically vents between 3 & 5 PSIG (0.2 & 0.35 bar). Stainless steel handle & hardware with latch-catch system holds the cap in the open position for easy filling & pouring. Large-mouth opening features a built-in stainless-steel flame arrester to guard against outside ignition. Current-carrying, patented carbon insert embedded in the container allows for proper grounding. The broad-base design provides stability & resists accidental tip over.

WASTE LIQUID				
Description & Capacity	Dimensions (OD x H)	Approved/LSTG Regulation	Model No.	Ship WT lb/kg
2 gallon (7.5 L) red polyethylene can with stainless steel hardware with 08530 fill gauge built-in	12 x 14.75 IN / 305 x 375mm	-	J-14265	7/3
2 gallon (7.5 L) red polyethylene can with stainless steel hardware	12 x 14.75 IN / 305 x 375mm	FM	J-14762	7/3
2 gallon (7.5 L) white polyethylene can with stainless steel hardware	14.75 x 12 IN / 375 x 305mm	FM	J-12751	7/3
5 gallon (19 L) red polyethylene can with stainless steel hardware	12 x 20 IN / 305 x 508mm	FM	J-14765	11/5
5 gallon (19 L) white polyethylene can with stainless steel hardware	12 x 20 IN / 305 x 508mm	FM	J-12754	11/5
Replacement flame arrester, stainless steel	-	-	J-11406	2/1





Oily Waste Cans

Dispose of oil-soaked rags & prevent fires caused by stray sparks for spontaneous combustion.

Rags & cloths soaked with solvents, thinners, linseed oil, combustible adhesives & other flammable liquids present a serious fire risk when improperly discarded. Lid opens to no more than 60 degrees & stays closed when not in use, isolating contents from fire sources and limiting oxygen to virtually eliminate the risk of spontaneous combustion. Round construction & elevated base allow circulation of air around can to disperse heat & reduce moisture build-up and rusting. Durable steel construction with a powder-coated finish provides chemical resistance. Approved by FM, UL, & TUV. All cans carry a 10 year warranty.

Soundguard oil waste cans include a sound muffling pad inside lid to reduce lid-closure noise by nearly 200% over standard models, ideal for laboratories or anywhere it is desirable to lessen disruptive noise.

Lid opens no more than 60 degrees angle as required by UL.

OILY WASTE CANS

Description & Capacity	Dimensions (OD x H)	Appd/LSTG Reg	Red Can Mod. No.	Yellow Can Mod No.	Ship WT lb/kg
8 Liter Countertop Oily Waste Can	244 x 232mm	FM	J-09200	J-09200Y	3
20 Liter Oily Waste Can with foot operated cover	302 x 403mm	FM, UL, TUV	J-09100	J-09101	5
34 Liter Oily Waste Can with foot operated cover	354 x 464mm	FM, UL, TUV	J-09300	J-09301	5
52 Liter Oily Waste Can with foot operated cover	408 x 514mm	FM, UL, TUV	J-09500	J-09501	7
80 Liter Oil Waste Can with foot operated cover	467 x 595mm	FM, UL, TUV	J-09700	J-09701	10

SOUNDGARD OILY WASTE CAN

Description & Capacity	Dimensions (OD x H)	Appd/LSTG Reg	Red Can Mod. No.	Silver Can Mod No.	Ship WT lb/kg
1.7 Liter mini bench top oily waste can	117 x 165mm	FM	J-09410	-	3
20 Liter Oily Waste Can with foot operated cover	302 x 403mm	FM, UL, TUV	J-09108	J-09104	5
34 Liter Oily Waste Can with foot operated cover	354 x 464mm	FM, UL, TUV	J-09308	J-09304	5





Polyethylene Dispensing Cans & Squeeze Bottles

Dispensing cans permit easy, one-hand dispensing of liquids directly onto work surface. Leakproof, self-closing, brass dispenser valve minimizes spills & controls excess. FM approved brass valves are ideal for use with flammables. Textured, high density Polyethylene body provides a firm grip.

Squeeze bottles made of Polyethylene with a stainless steel wire, provide safe dispensing of flammable liquids directly on small components or subassemblies with a minimum of over-spray. Squeezing the bottle produces a fine stream of liquid. Stem can be shaped to dispense into hard-to-get areas. Squeeze bottles are intended for daily use only.

POLYETHYLENE DISPENSING CANS & SQUEEZE BOTTLES					
Description & Capacity	Dimensions (OD x H)	Opening Spout ID	Appd/LSTG Reg	Mod. No.	Ship WT lb/kg
4 ounce (0.12 L) polyethylene dispenser can, translucent	2.25 x 5.5 IN / 57 x 140mm	0.25 IN (6mm)	FM	J-14002	2/1
8 ounce (0.24 L) polyethylene dispenser can, red	3.125 x 5.5 IN / 79 x 140mm	0.25 IN (6mm)	FM	J-14004	2/1
8 ounce (0.24 L) polyethylene dispenser can, translucent	3.125 x 5.5 IN / 79 x 140mm	0.25 IN (6mm)	FM	J-14005	2/1
1 quart (1 L) polyethylene dispenser can, red	4 x 10.5 IN / 102 x 267mm	0.25 IN (6mm)	FM	J-14010	2/1
1 quart (1 L) polyethylene dispenser can, translucent	4 x 10.5 IN / 102 x 267mm	0.25 IN (6mm)	FM	J-14012	2/1
1 pint (0.5 L) polyethylene squeeze bottle with flexible dispensing tube, translucent	3 x 7.5 IN / 76 x 191mm	-	-	J-14009	2/1
1 quart (1 L) polyethylene squeeze bottle with flexible dispensing tube, translucent	3.5 x 9.125 IN / 89 x 232mm	-	-	J-14011	2/1





Safety Plunger Cans

Moisten cleaning cloths quickly and easily—smart-pump brings more liquid to the top and requires less time between refills

Dispense flammable liquids and solvents safely, without waste or exposure. Made of chemically resistant Ryton® and brass, the pump base is designed to leave less liquid in the bottom before having to refill.

Pushing down on the pump assembly fills the upper pan with liquid. Surplus liquid drains safely back into reservoir. The perforated upper pan serves as a flame arrester. Top rim has molded edge protector for smooth, trouble-free moistening.

SAFETY PLUNGER CANS

Description & Capacity	Dimensions (OD x H)	Approved/LSTG Reg	Red Can Mod. No.	Yellow Can Mod. No.	Ship WT lb/kg
1 pint (0.5 L) steel plunger can (steel)	4.875 x 5.25 in/125 x 133mm	FM,TÜV	J-10008	J-10018	1/1
1 quart (1 L) steel plunger can (steel)	7.25 x 5.625 in/185 x 143mm	FM,TÜV	J-10108	J-10118	2/1
2 quart (2 L) steel plunger can (steel)	7.25 x 7.875 in/185 x 200mm	FM,TÜV	J-10208	J-10218	2/1
1 gallon (4 L) steel plunger can (steel)	7.25 x 10.5 in/185 x 267mm	FM,TÜV	J-10308	J-10318	4/2
1 quart (1 L) polyethylene plunger can (brass)	5.5 x 8.25 in/141 x 210mm	FM,TÜV	J-14018Z	-	2/1





Bench Cans

An easy means of cleaning small parts in solvent, simply place work on spring-loaded, perforated dasher plate, press down & agitate, then release to return dasher to drain position. Plated steel dasher also works as an effective flame arrester to reduce the risk of fire flashback. Hinged cover minimizes evaporation losses & protected rim reduces the possibility of hand injury.

BENCH CANS						
Description & Capacity	Dasher Diameter	Dimensions (OD x H)	Appd/LSTG Reg	Red Can Mod. No.	Yellow Can Mod. No.	Ship WT lb/kg
1 quart (1 L) steel bench can	4.5 IN / 114mm	4.875 x 5.5 IN / 124 x 140mm	FM, TUV	J-10175	J-10171	2/1
2 quart (2 L) steel bench can	7.5 IN / 191 mm	9.375 x 3.25 IN / 238 x 83mm	FM, TUV	J-10295	J-10291	4/2
1 gallon (4 L) steel bench can	7.5 IN / 191 mm	9.375 x 4.5 IN / 238 x 114 mm	FM, TUV	J-10375	J-10385	4/2
2 gallon (8 L) steel bench can	9.75 IN / 248mm	11.5 x 5.875 IN / 292 x 149mm	FM, TUV	J-10575	J-10578	9/4
Basket for J-10375, J-10385, J-10575 & J-10578	-	6.4375 x 4.375 IN / 164 x 111mm	-	J-11171	J-11171	1/1



DRUM FUNNELS & EQUIPMENT

Safety Drum Funnel

Prevent spills when transferring flammable solvents, thinners, oils or plant wastes.

- Wide mouth opening with hinged, stay open lid
- Built-in flame arrester prevents fire intrusion
- Self-closing lid in case of fire
- Galvanized steel with durable exterior epoxy powder-coated finish

Safely transfer flammable liquids into a 30 or 55 gallon (110- or 200-L) drum using this 2.6 gallon (9.8-L) capacity safety funnel that fits into a 2-IN (51MM) bung. FM approved, EPA & OSHA Compliant.

SAFETY DRUM FUNNELS							
Description & Capacity	Funnel Size Dia x H	Mouth Dia	NPT / NPS	Appd/LSTG Reg	Red Funnel Mod. No.	Yellow Funnel Mod. No.	Ship WT lb/kg
Safety Drum funnel with self-closing cover & 6 IN, (152mm) flame arrester	10.75 x 10 IN / 273 x 254 mm	10.75 IN / 273mm	2 IN (DN50)	FM, TUV	J-08207	J-08227	11/5
Safety Drum funnel with self-closing cover & 32 IN (813mm) flame arrester	10.75 x 10 IN / 273 x 254 mm	10.75 IN / 273mm	2 IN (DN50)	FM, TUV	J-08205	J-08206	29/13





Original Smoker's Cease Fire® Cigarette-Butt Receptacles

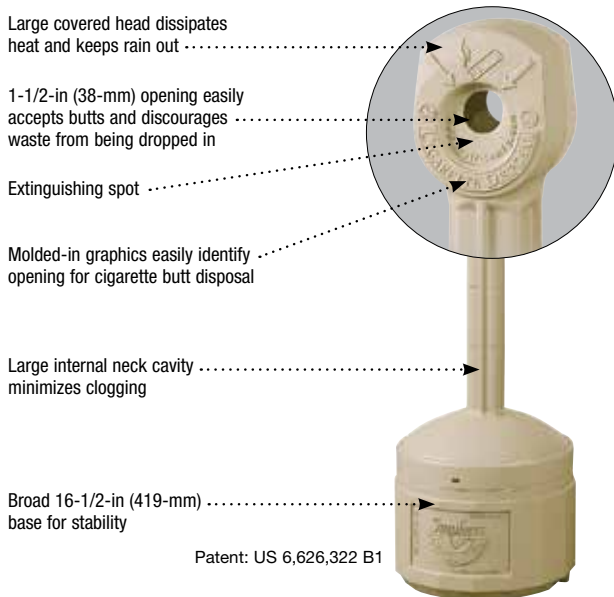
Enhance your business image and keep entrances clean from cigarette litter, with minimal maintenance

- Made of flame-retardant and sturdy polyethylene that won't rust, dent or crack
- Innovative self-extinguishing design safely collects unsightly cigarette litter and reduces the risk of fire
- Tie-down notches offer security and greater stability under severe weather conditions
- Units include a galvanized steel bucket that collects thousands of butts
- Personal Smoker's Cease-Fire features a compact design measuring 11-in diameter by 30-in high (762 x 279-mm)—suitable for lighter smoking traffic areas
- Optional disposable bucket liners available for maximum cleaning convenience—simply remove bag, tightly close it off and discard

SPECIFICATIONS

Description	Capacity	H x Dia	Approv/Lstg Regulation	Pewter Gray M	Adobe Beige M	Deco Black M	Terra Cotta M	Forest Green M
Original Smoker's Cease Fire® 4 gallons	4 gallons 15 L	38.5 x 16.5 in 978 x 419 mm	FM	J-26800	J-26800B	J-26800D	J-26800T	J-26800G
Personal Smoker's Cease Fire®	1 gallon 4 L	30 x 11 in 762 x 279 mm	FM	J-26806	J-26806B	J-26806D	J-26806T	J-26806G
Disposable bucket liner Original Smoker's Cease Fire® - 10 pack with twist ties.				J-26827				
Bucket liner master pack for Original Smoker's Cease Fire® - 25 packs of ten with twist ties				J-26830				

*** The liner and smoker receptacle used together are an FM-approved system. The bucket liner is for hygienic purposes, and only for use within the Smoker's Cease-Fire® system.**





Original Smoker's Cease Fire® Heavy Duty Butt Cans

Position slim-styled, self-extinguishing smoking receptacles near entryways to encourage proper disposal

- Fire-safe galvanized steel two-piece base with neck features a tough powder coat finish to resist rust
- Polyethylene top keeps rain out
- Easy-to-empty by untwisting compression nut where neck meets the base—no separate screws to lose
- Perfect for outdoor industrial settings such as factories, backdoor entrances, alleyways, loading docks, and service and repair shops



SPECIFICATIONS			
Description	H x Dia	Capacity	Safety Red Model
Heavy duty butt can	34 x 11.50 in (864 x 292 mm)	2.50 gallons (9 L)	J-26810R
Heavy duty butt can	38.50 x 11.50 in (978 x 292 mm)	5 gallons (19 L)	J-26811R



Dry Areas - Heavy duty 479 Cushion Trax®

Best selling anti-fatigue mat with ergonomic benefit derived from 14 mm thick worker platform comprised of a long-wearing top surface laminated onto a resilient microcellular vinyl base for maximum durability, comfort, and insulation from hard floors and vibrations. Diamond plate pattern provides traction while allowing easy twist turns.

The design and material composition make this the most versatile matting solution for fatigue relief in both static and dynamic working positions. Slip resistance R10 according to DIN51130 and BG-rule BGR181. Tested and certified by the National Floor Safety Institute (NFSI). Featured with RedStop™ slip-resistant backing to prevent mats from shifting. Available yellow borders along sides comply with OSHA code 1910-144. Bevelled edges on all four sides to minimize risk of tripping. UniFusion™ technology engineered to resist in the harshest work environments.

Recommended use: Heavy duty, Dry industrial environments.

- In manufacturing plants, assembly lines, picking, packing and logistics warehouses, individual workstations. Also suitable for commercial environments including hotels, reception desks, shop counters, department stores, banks, restaurants, etc.

FEATURES

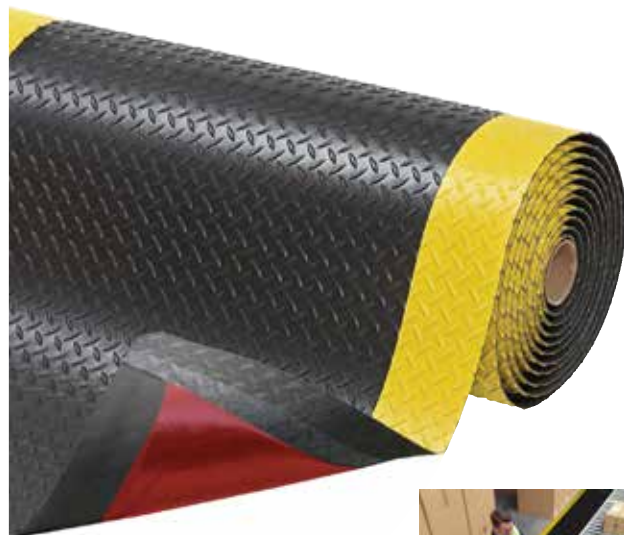
- PVC on microcellular vinyl base
- Backing: Microcellular PVC foam
- Bevelled edges on all sides
- Overall thickness: 14 mm
- Fire rating: EN 13501-1 Bfl-S1
- Slip rating: R10
- Coefficient of friction NSF1 certified, Free of DOP, free of DMF, free of ozone depleting substances, free of silicone and free of heavy metals

479 CUSHION TRAX® (BLACK/YELLOW)

SPECIFICATIONS

Item Code	Dimensions	Weight kg
479C0024YB	60cm x linm	3.4
479R4875YB	122cm x 22.8m	158
479C0060YB	152cm x linm	8.5
479R6075YB	152cm x 22.8m	209.8
479R2475YB	60cm x 22.8m	77
479S0023YB	60cm x 91cm	3.2
479C0036YB	91cm x linm	4.9
479S0035YB	91cm x 150cm	8
479R3675YB	91cm x 22.8m	110
479S303MYB	91cm x 300cm	14.8
479C0048YB	122cm x linm	7
479S306MYB	91cm x 600cm	31.8

TESTS CERTIFICATES AVAILABLE ON REQUEST





Dry Areas - Heavy duty 556 Cushion Ease Solid™

Ergonomic, Anti-fatigue Safety Matting

Heavy-duty rubber tiles of 91 cm x 91 cm can be easily assembled for coverage of large areas or individual workstations, wall-to-wall or as islands. Ergonomic benefit derived from a 19 mm thick worker platform with a closed anti-slip pebble structure surface for maximum anti-fatigue comfort in dry industrial environments. Compatible with patented MD Ramp System™ for smart safety bevelling solutions; allow out and inside corners. Slip resistance rating R9 according to DIN 51130.

Recommended use: Heavy duty, Dry industrial environments

- For placement in manufacturing plants, assembly lines, picking, packing and logistics warehouses, individual work stations.

FEATURES

- 100% Natural rubber
- Attachable bevelled edges are available
- Overall thickness: 19 mm
- Slip rating: R9
- Special characteristics: Free of DOP, free of DMF, free of ozone depleting substances, free of silicone and free of heavy metals

556 CUSHION EASE SOLID™ (BLACK)

SPECIFICATIONS

Item Code	Dimensions	Weight kg
556S0000BL	per m ²	13.6
556S0033BL	91cm x 91cm	12.7

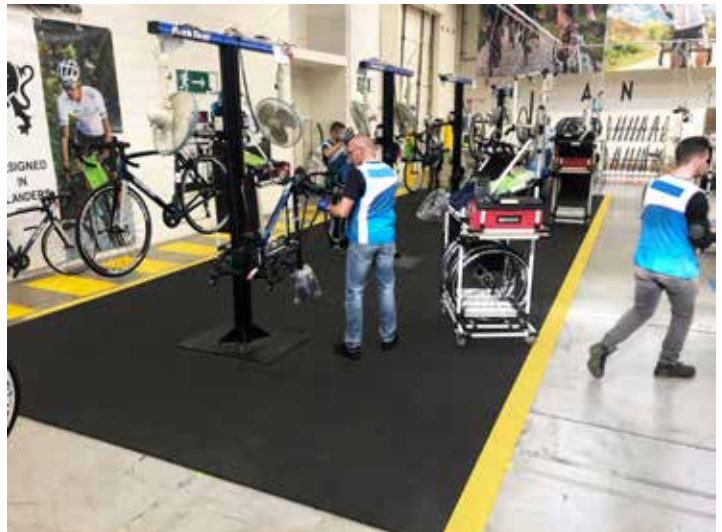
RECOMMENDED ACCESSORIES:

- 551 MD Ramp System™ Nitrile
- 552 MD-X Ramp System™ Nitrile

CLEANING INSTRUCTIONS:

- Daily sweeping with a brush

TESTS CERTIFICATES AVAILABLE ON REQUEST





Wet/Dry and Oily Areas - Heavy duty 549 Safety Stance™

High quality anti-fatigue matting for use in areas where there can be frequent oil spilling. Drainage holes and raised studs provide aeration and allow fluids and debris to fall through, leaving a dry and tidy top surface. Made of 100% nitrile rubber compound, designed to withstand industrial oils and harsh chemicals. Suited for multi-shift operations.

Ergonomic benefit derived from 22 mm thick resilient worker platform. Highly visible nitrile rubber orange coloured borders included on 3 sides for added safety.

Aggressive slip-resistant surface. Cleaning with detergent and waterjet is recommended for extended service life. Standard size mats are loose lay and require no installation. Nonshifting. Free of silicone therefore safe for vehicle painting facilities.

Recommended use: Heavy duty WET/DRY Industrial Environments

- For placement in manufacturing plants, production lines, assembly lines, CNC machines, metal working for individual workstations and custom work platforms.

FEATURES

- 100% Nitrile rubber
- Orange coloured borders included on 3 sides
- Overall thickness: 22 mm
- Special characteristics: Resistant to most chemicals, Free of DOP, free of DMF, free of ozone depleting substances, free of silicone and free of heavy metals
- Resistant to industrial oils and harsh chemicals

549 SAFETY STANCE™ (ORANGE/BLACK)

SPECIFICATIONS		
Item Code	Dimensions	Weight kg
549S26400B	66 cm x 102 cm	8.8
549S31240B	97 cm x 315 cm	37.2
549S38640B	97cm x 163 cm	21

RECOMMENDED ACCESSORIES:

- 549K Safety Stance™ Connectors
- 549N Safety Stance™ Ramps Nitrile 5 mm

TESTS CERTIFICATES AVAILABLE ON REQUEST





348 Sani-Master™

Ergonomic, Anti-fatigue & Safety Matting - Hygiene Matting

This 19-mm thick extendable mat cleans, sanitizes and dries shoes, recommended to be placed at entrances to prevent contamination. As traffic passes, rubber tips bend to immerse soles in disinfectant solution, absorbing mat section cleans and dries shoes to prevent slips.

Brand Notrax®

Category: Hygiene Matting

Product Number: 348

Product Family: Industrial & Commercial Matting

Product Group Ergonomic: Anti-fatigue & Safety Matting

Product Name: Sani-Master™

Recommended use: At doorways, starter rooms, packaging areas, laboratories, employee locker rooms, break rooms, refuse areas and receiving areas. Any place where spread of contamination needs to be limited.

Type: Wet Areas - Hygienic Mats

Usage Intensity: Heavy duty

TECHNICAL SPECIFICATIONS

- **Application:** Industrial Environments
- **Edges:** Bevelled rubber borders on all four sides
- **Material:** Natural rubber
- **Material Group:** Natural rubber
- **Process:** Compression Moulding
- Convenient mat size fits most doorways
- Extendable sections for a longer drying zone for wet sanitized shoe soles
- 100% tough natural rubber compound; designed to resist most chemicals and variations in temperature
- Heavy duty

COLOURS

Charcoal/Black

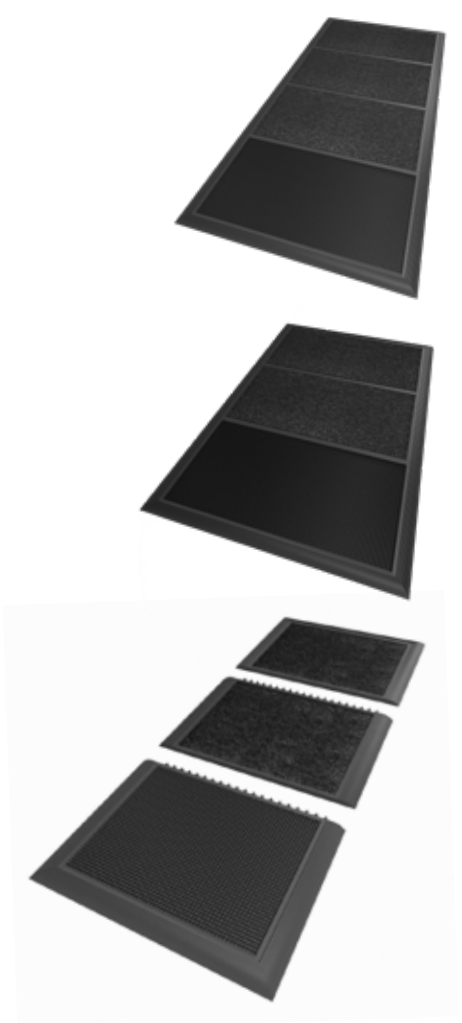
INDOOR/OUTDOOR - DISINFECTION ENTRANCE MATTING

ART 348SANI-MASTER™ (REGULAR)

SPECIFICATIONS

Item Code	Dimensions	Weight kg
348S0033CH	91.4cm x 105cm (2-Zones)	10.7 kg
348S0035CH	91.4cm x 152.5cm (3-Zones)	15.5 kg
348S0037CH	91.4cm x 200cm (4-Zones)	20.4 kg

REQUEST CHEMICAL FOR DISINFECTING



Polyethylene Chemical Compatibility Guide

Acetaldehyde 40%	Butanol	Fluosilicic Acid	Methyl Amine 32%	Selenic Acid
Acetamide	Butyl Acetate	Formaldehyde 40%	Methyl Sulphate	Silicic Acid
Acetic Acid 10%	Butyl Alcohol	Formamide	Methyl Sulphuric Acid	Silver Nitrate
Acetone	Butylene Glycol	Formic Acid	Monochloroacetic Acid Ethyl Ester	Sodium Acetate sat.sol
Acrylonitrile	Butyric Acid	Fruit Pulp sol	Monochloroacetic Acid Methyl Ester	Sodium Acrylates
Adipic Acid	Calcium Carbonate sat.sol	Furfural	Morpholin	Sodium Benzoate
Aliphatic Hydrocarbons	Calcium Chloride	Gallic Acid sat.so	MowlithD	Sodium Bicarbonate
Allyl Alcohol 96%	Calcium Hydroxide	Gluconic Acid	Muriatic Acid	Sodium Bisulphate sat.sol
Alum (aqu.sol)	Calcium Hypochlorite sol	Glycerine	Nickel Chloride sat.so	Sodium Bisulphite
Aluminium Chloride sat.sol	Calcium Nitrate 50%	Glycol	Nicotine Dilute	Sodium Bromide
Aluminium Fluoride	Calcium Sulphate sat.sol	Glycol Ethers	Nicotinic Acid	Sodium Carbonate
Aluminium Hydrogen sol 10%	Carbonic Acid (Aq.CO2)	Glycolic Acid	Nitric Acid 25%	Sodium Chlorate
Aluminium Hydroxide	Carbon Monoxide	Heptane	n-Octane	Sodium Chloride
Aluminium Sulphate sat.sol	Caustic (Aqueous)	Hexane	Octyl Cresol	Sodium Chromate
Ammonia (Anhydrous)	Caustic Potash Sol. 50%	Hexanel Tert	Oleic Acid	Sodium Disulphite
Ammonia (aqu.sol)	Caustic Soda Sol. 10%	Hydrazine Hydrate	Orthophosphoric Acid 50%	Sodium Dithionite 10%
Ammonia (100% Dry Gas)	Chloral Hydrate	Hydrosulphite 10%	Oxalic Acid	Sodium Ferricyanide
Ammonium Acetate	Chloroethanol	Hydroxylamine Sulphate	Paraffin Emulsions	Sodium Ferrocyanide sat.sol
Ammonium Bifluoride	Chloric Acid 10%	Hydrazine 35%	Paraffin Oil	Sodium Fluoride sat.sol
Ammonium Carbonate 50%	Chloroacetic Acid	Hydrazine Hydrochloride	Perchloric Acid 20%	Sodium Hydroxide Conc.
Ammonium Chloride	Chlorobenzene	Hydroiodic Acid	Phosphoric Acid 50%	Sodium Hypochlorite
Ammonium Hydrogen Fluoride 50%	Chrome Alum sat.sol	Hydrobromic Acid 50%	Phosphorous Yellow	Sodium Iodide
Ammonium Hydroxide	Chromic Acid sat.sol	Hydrocyanic Acid sat.sol	Phosphorous Pentoxide	Sodium Nitrate
Ammonium Metaphosphate sat.so	Citric Acid 25%	Hydrochloric Acid 36%	Phthalic Acid	Sodium Oxalate
Ammonium Nitrate sat.sol	Clorox Bleach	Hydrofluoric Acid 40%	Phthalic Anhydride	Sodium Persulphate
Ammonium Persulphate sat.so	Copper Cyanide	Hydrofluorasilicic Acid	Picric Acid 1%	Sodium Phosphate
Ammonium Phosphate	Copper Nitrate	Hydrogen Bromide 10%	Potash	Sodium Silicate
Ammonium Sulphide sat.sol	Copper Sulphate	Hydrogen Peroxide 20% Sulphates 50%	Potassium/ Aluminum	Sodium Sulphate
Ammonium Thiocyanate sat.sol	Cresol 90%	Hydrogen Phosphide 100%	Potassium Bichromate	Sodium Sulphide
Amyl Acetate	Cresylic Acid	Hydrogen Sulphide	Potassium Borate 10%	Sodium Sulphonates
Amyl Alcohol	Crotonic Aldehyde	Hypochlorous Acid	Potassium Bromide	Sodium Thiosulphate
Antimony Salts	Cuprous Chloride sat.sol	Iodine (Alc. Sol.) Conc	Potassium Chlorate	Starch Solution sat.sol
Antimony Trichloride 90%	Cyclohexane	Iron (II) Chloride sat.sol	Potassium Chloride	Stearic Acid
Aqueous Alkalies (NaOH)	Cyclohexanol	Iron (III) Sulphate sat.sol	Potassium Chromate	Succinic Acid
Arsenic Acid	Dextrin sat.so	Iron (III) Chloride sat.sol	Potassium Cyanide	Sulphur
Asorbic Acid 10%	Dextrose sat.sol	Iron (III) Nitrate sat.sol	Potassium Dichromate 40%	Sulphuric Acid 50%
Barium Carbonate sat.sol	Diethyl Carbonate	Iron (III) Sulphate sat.sol	Potassium Fluoride	Tannic Acid sol
Barium Chloride	Disodium Phosphate	Isopropanol	Potassium Hydroxide	Tanning Extracts
Barium Cyanide	Diethylene Glycol	Isopropyl Acetate	Potassium Iodide	Tartaric Acid sat.sol
Barium Hydroxide sat.sol	Diglycolic Acid 30%	Isopropyl Alcohol	Potassium Nitrate sat.sol	Tetraethyl Lead
Barium Nitrate	Dioxane	Lactic Acid (All Conc)	Potassium Perborate sat.sol	Tributylprophate
Barium Sulphate sat.sol	Electrolyte	Lead Acetate sat.sol	Potassium Perchlorate	Tricresyl Phosphate
Barium Sulphide	Ethanol	Magnesium Carbonate	Potassium Permanganate	Triethanolamine
Battery Fluid, Acid	Ethylene Chlorohydrin	Magnesium Hydroxide	Potassium Persulphate sat.sol	Trisodium Phosphate sat.sol
Benzaldehyde	Magnesium Oxide	Magnesium Nitrate	Potassium Phosphates	Urea
Benzene Ethylene Diamine	Ethylene Glycol	Potassium Sulphate	Wetting Agents	White Acid 75%
Benzoic Acid	Ferric Chloride sat.sol	Magnesium Sulphate	Propanol	Yeast sol
Benzyl Alcohol	Ferric Nitrate sat.sol	Maleic Acid	Propargyl Alcohol 7%	Zinc Bromide sat.sol
Benzyl Chloroformate	Ferric Salts	Malic Acid 1%	Propionic Acid 50%	Zinc Chloride sat.sol
Boric Acid Dilute	Ferric Sulphate sat.sol	Mercury	Propyl Alcohol	Zinc Sulphate
Boric Acid Conc	Ferrous Sulphate	Methanol	Propylene Dichloride	
Butadiene	Fluoboric Acid	Methyl Acetate	Propylene Glycol	
Butanediol		Methyl Alcohol	Propylene Oxide	

Polyethylene products are compatible for use with the substances and concentration levels shown above. This guide was compiled from various sources as an information aid only. No tests have been conducted to validate the information and we assume no responsibility of liability for the use or misuse of this information.

Hazchem Sorbent Chemical Suitability Guide

Liquid	%	Liquid	%	Liquid	%	Liquid	%
Acetic Acid	97	Carbonic Acid	dil	Magnesium Hydroxide	dil	Sodium Bisulphate	dil
Acetic Acid	50	Castor Oil	100	Magnesium Nitrate	dil	Sodium Bisulphite	dil
Acetic Acid	40	Catyl Alcohol	100	Magnesium Sulphate	dil	Sodium Borate	dil
Acetic Acid	10	Chromic Acid	50%	Magnesium Sulphite	dil	Sodium Bromide Oil	dil
Acetone	100	Cider		Meat Juices		Sodium Carbonate	dil
Acetophenone	100	Citric Acid	dil	Mercuric Cyanide	dil	Sodium Chlorate	dil
Aluminium Chloride	dil	Copper Chloride		Mercurous Nitrate	dil	Sodium Chloride	dil
Aluminium Fluoride	dil	Copper Cyanide	dil	Methyl Ethyl Ketone	100	Sodium Chlorite	dil
Aluminium Sulphate	dil	Copper Nitrate	dil	Methyl Alcohol	100	Sodium Cyanide	dil
Ammonia	30	Copper Fluoride	dil	Milk		Sodium Dichromate	dil
Ammonium Carbonate	dil	Copper Sulphate	dil	Mineral Oil	100	Sodium Ferricyanide	dil
Ammonium Chloride	dil	Cotton Seed Oil	dil	Motor Oil	100	Sodium Ferrocyanide	dil
Ammonium Hydroxide	dil	Cuprous Chloride		Nickel Chloride	dil	Sodium Fluoride	dil
Ammonium Metaphosphate	dil	Cyclohexanol	dil	Nickel Nitrate	dil	Sodium Hypochlorite	dil
Ammonium Nitrate	dil	Cyclohexanone	100	Nickel Sulphate	dil	Sodium Nitrate	dil
Ammonium Persulphate	dil	Detergents	100	Nitric Acid	60	Sodium Nitrite	dil
Ammonium Sulphate	dil	Dibutyl Phthalate		Nitric Acid	10	Sodium Silicate	dil
Ammonium Sulphide	dil	Diethylene Glycol	100	Nitrobenzene	100	Sodium Sulphate	dil
Ammonium Thiocyanate	dil	Emulsifiers	100	Oleic Acid		Sodium Sulphide	dil
Amy Alcohol	100	Ethyl Acetate		Olive Oil	100	Sodium Sulphite	dil
Aniline	100	Ethyl Alcohol	100	Paraffin	100	Stannous Chloride	dil
Antimony Chloride	dil	Ethyl Benzene	96	Petrol	100	Sulphuric Acid	60
Aviation Fuel	100	Ethyl Ether	100	Phenol	100	Sulphuric Acid	50
Aviation Turbine Fuel	100	Ethylene Dichloride	100	Phosphoric Acid	95	Tannic Acid	dil
Barium Carbonate	dil	Feric Chloride	100	Potassium Bicarbonate	dil	Tartaric Acid	dil
Barium Chloride	dil	Feric Nitrate	dil	Potassium Bromate	dil	Tetrachloroethylene	100
Barium Hydroxide	dil	Feric Sulphate	dil	Potassium Bromide	dil	Transformer Oil	100
Barium Sulphate	dil	Fluosilicic Acid	dil	Potassium Carbonate	dil	Trichloroacetic Acid	100
Beer		Formaldehyde	dil	Potassium Chlorate	dil	Trichloroethane	100
Benzene	100	Formic Acid	40	Potassium Chloride	dil	Triethanolamine	100
Benzoic Acid		Fruit juice	100	Potassium Chromate	dil	Urea	
Benzyl Alcohol		Gasoline		Potassium Cyanide	dil	Urine	
Bismuth Carbonate	dil	Gear Box Oil	100	Potassium Dichromate	dil	Vinegar	
Boric Acid	dil	Glucose	100	Potassium Hydroxide	dil	Water	
Brine	dil	Hydrobromic Acid	20	Potassium Hydroxide	dil	Whisky	
Butly Alcohol	100	Hydrochoric Acid	dil	Potassium Nitrate	dil	White Paraffin	
Calcium Carbonate	dil	Hydrochoric Acid	20	Potassium Perchlorate	dil	White Spirit	100
Calcium Chlorate	dil	Hydrofluoric Acid	10	Potassium Permanganate	dil	Wines	
Calcium Chloride	dil	Hydrogen Peroxide	30	Potassium Sulphate	dil	Xylene	100
Calcium Hydroxide	dil	Inks	30	Potassium Sulphide	dil	Zinc Chloride	dil
Calcium Hyperchlorite	dil	Isopropyl Alcohol	100	Potassium Sulphite	dil	Zinc Oxide	dil
Calcium Nitrate	dil	Lead Acetate	dil	Propyl Alcohol	100	Zinc Sulphate	dil
Calcium Phospate	dil	Linseed Oils	100	Silicone Oil	100		
Calcium Sulphate	dil	Lubricating Oil	100	Soap Solution			
Calcium Sulphite	dil	Magnesium Carbonate	dil	Sodium Actetate	dil		
Carbon Disulphide	dil	Magnesium Chloride	dil	Sodium Bicarbonate	dil		

This guide was compiled from various sources as an information aid only. Spill Station Asia assumes no responsibility for the use or misuse of this information.



**SPILL
STATION**

SPILL STATION ASIA PTE LTD

61 Yishun Industrial Park A Unit #04-05 Singapore 768767

email: info@spillstation.com.sg

phone: +65 6555 3687

www.spillstation.com.sg